

Supplemental Figure 4 (S4): Armstrong Hospital Standard Data

Final Outputs of Armstrong Hospital (averaged over four runs)

	Low Patient Arrival	Middle Patient Arrival	High Patient Arrival
Percent Patients Ignored	0.0271 ± 0.002	0.0273 ± 0.0063	0.2834 ± 0.0340
Average Wait Time	6.1906 ± 0.4882	400.7155 ± 456.7417	233.7471 ± 118.4582
Percent Patients Turned Away	0 ± 0	0.3992 ± 0.0110	0.3056 ± 0.0242
Percent Patients Treated	0.9224 ± 0.0018	0.4237 ± 0.0083	0.2189 ± 0.0089
Number of Other Deaths	442 ± 9.4163	2450.75 ± 68.4805	4675.5 ± 111.2969
Number of Heart Attack Deaths	1 ± 1.4142	173.25 ± 17.4428	372.5 ± 42.595

Figure A: Table of final outputs of Armstrong Hospital data averaged over four runs for different patient arrival rates.

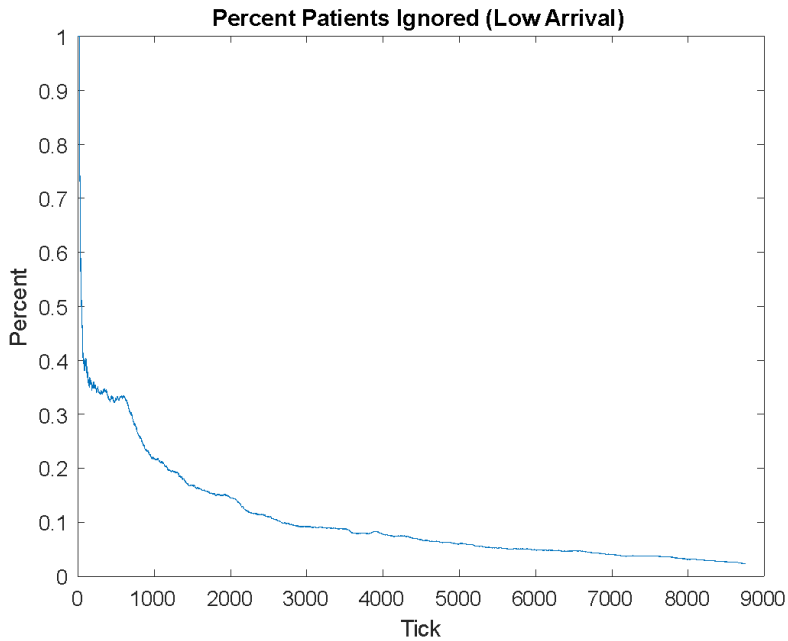


Figure B: Graph of percent of patients ignored vs. time (ticks) for Armstrong Hospital for low patient arrival rate.

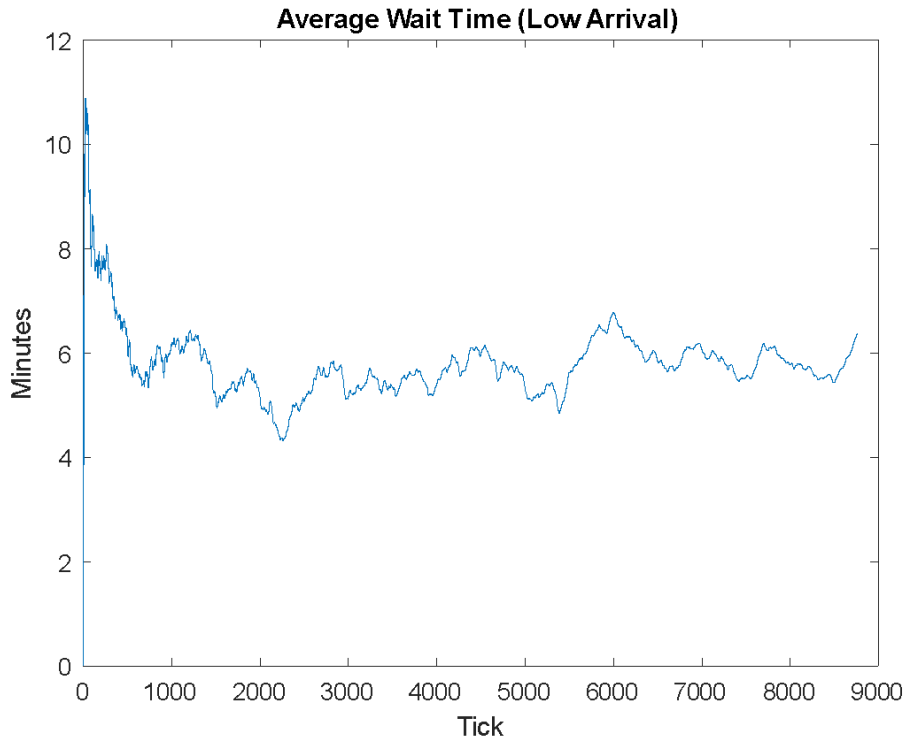


Figure C: Graph of average wait time (minutes) vs time (ticks) for Armstrong Hospital at a low patient arrival rate.

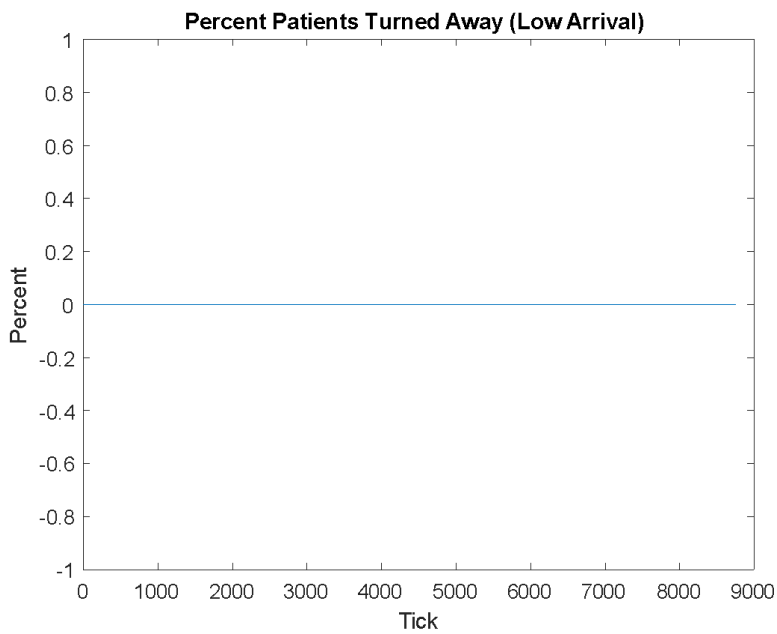


Figure D: Graph of percent of patients turned away vs time (ticks) for Armstrong Hospital at a low patient arrival rate.

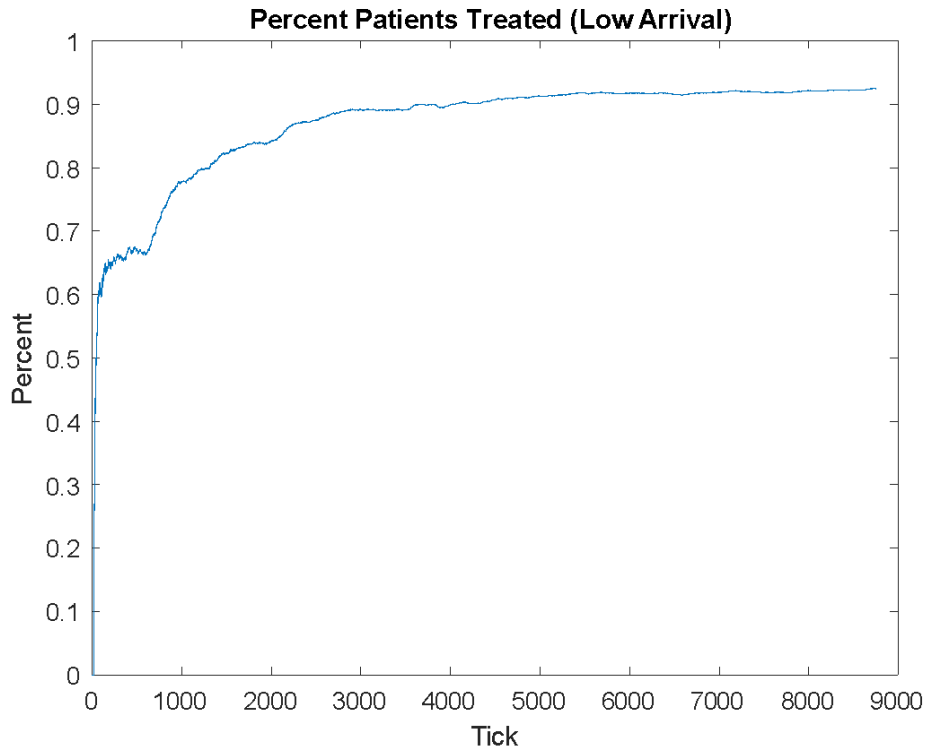


Figure E: Graph of percent of patients treated vs. time (ticks) for Armstrong Hospital at a low patient arrival rate.

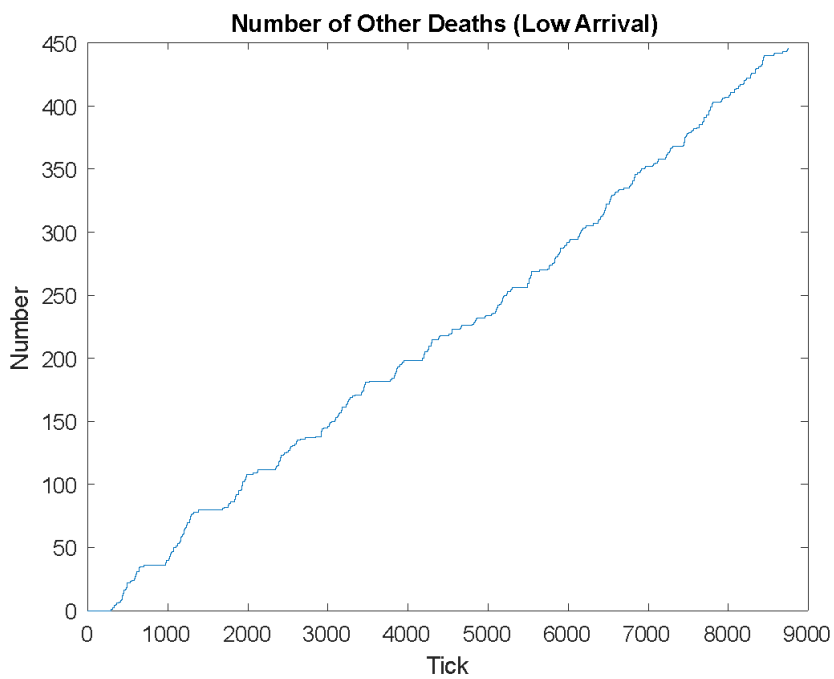


Figure F: Graph of number of other deaths vs. time (ticks) for Armstrong Hospital at a low patient arrival rate.

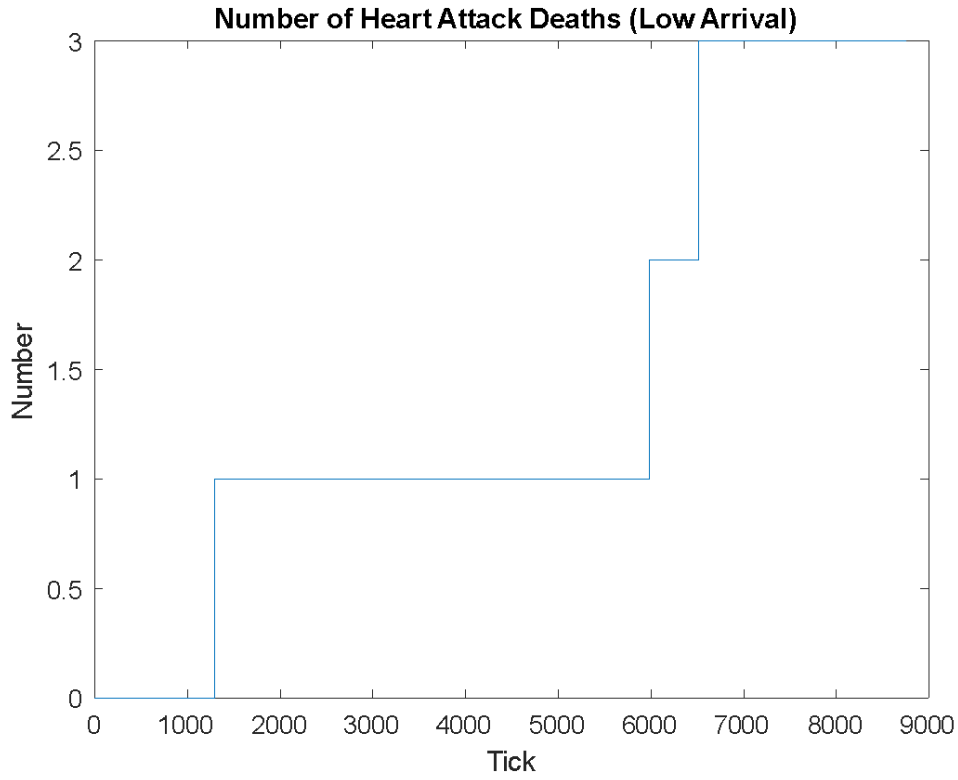


Figure G: Graph of number of heart attack deaths vs. time (ticks) for Armstrong Hospital at a low patient arrival rate.

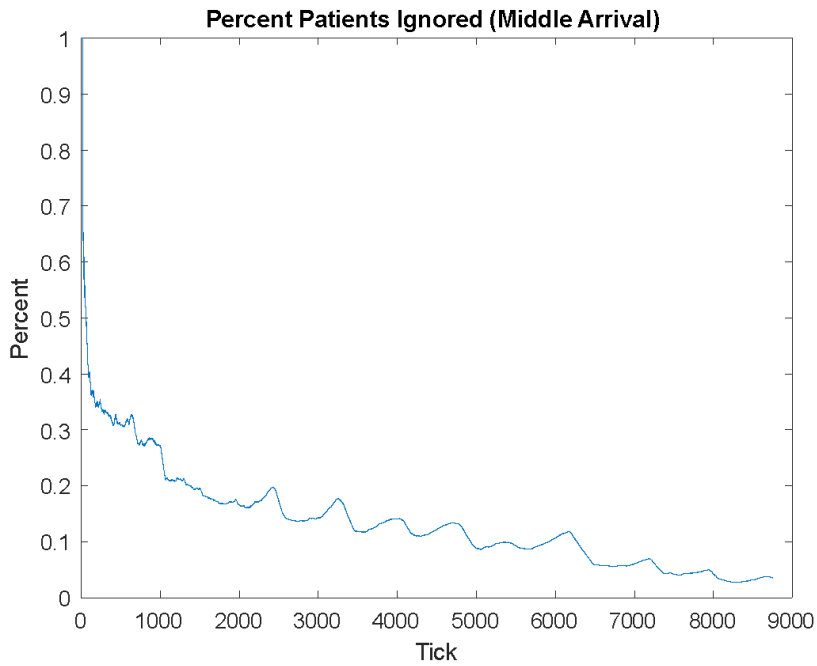


Figure H: Graph of percent of patients ignored vs. time (ticks) for Armstrong Hospital at middle patient arrival rate.

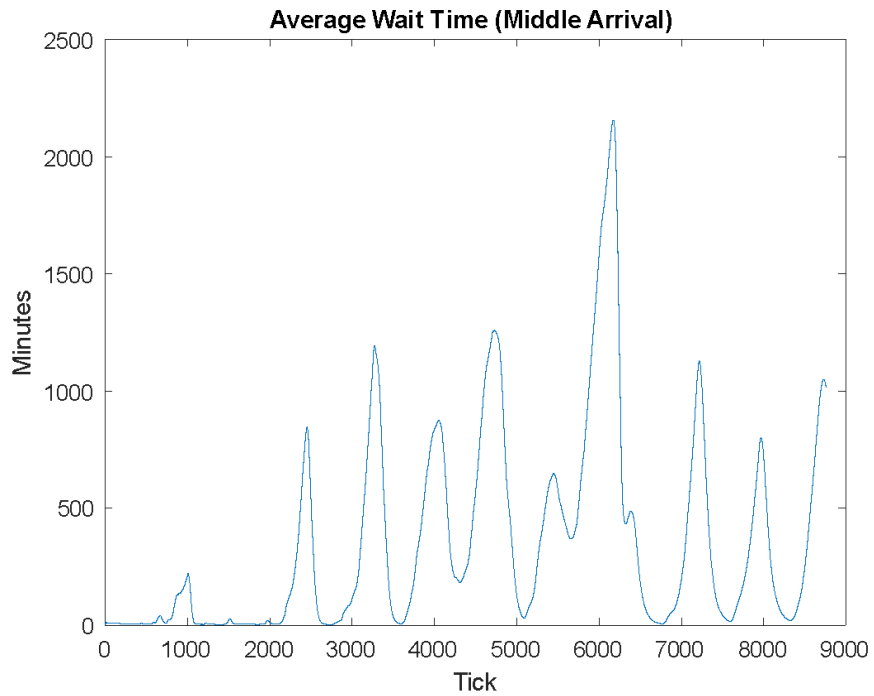


Figure I: Graph of average wait time (minutes) vs. time (ticks) for Armstrong Hospital at middle patient arrival rate.

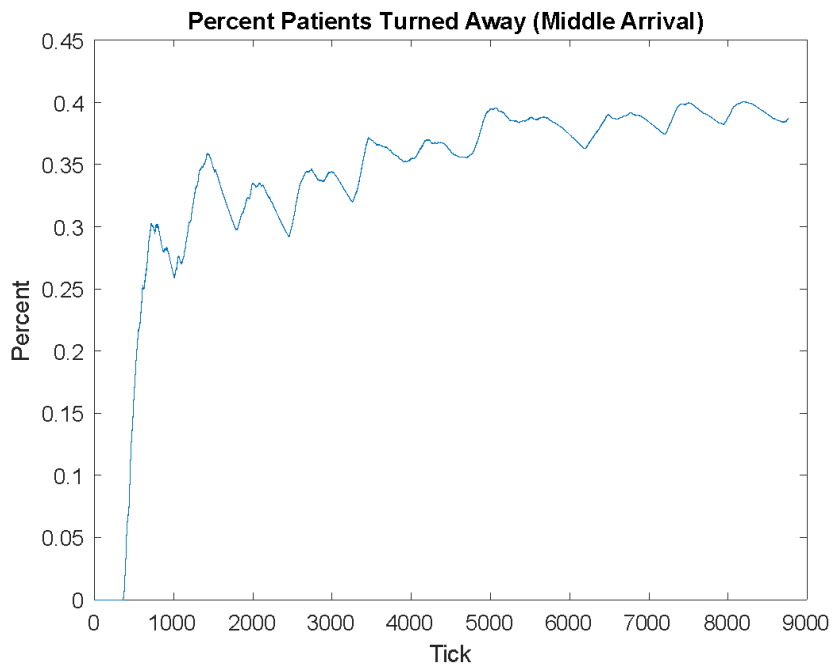


Figure J: Graph of percent of patients turned away vs. time (ticks) for Armstrong Hospital at middle patient arrival rate.

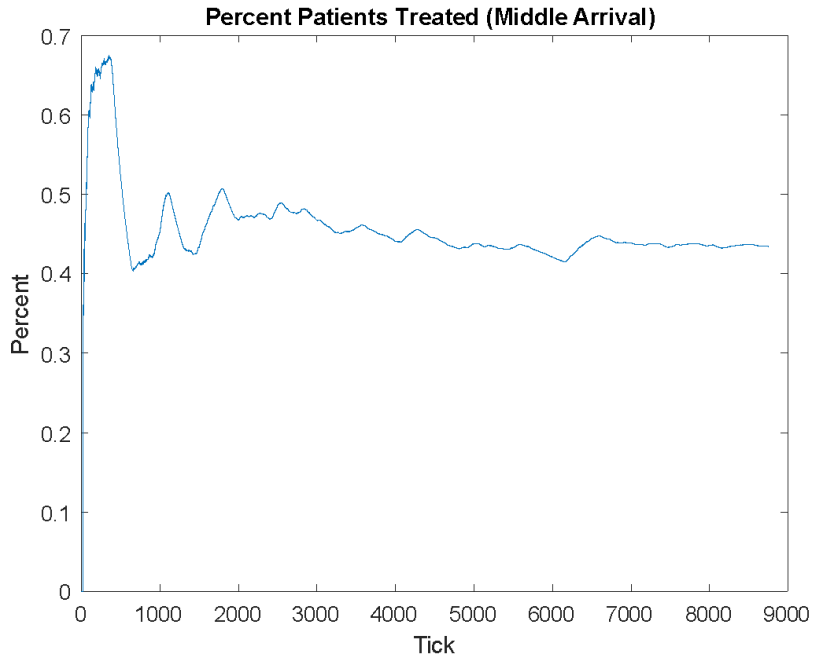


Figure K: Graph of percent of patients treated vs. time (ticks) for Armstrong Hospital at middle patient arrival rate.

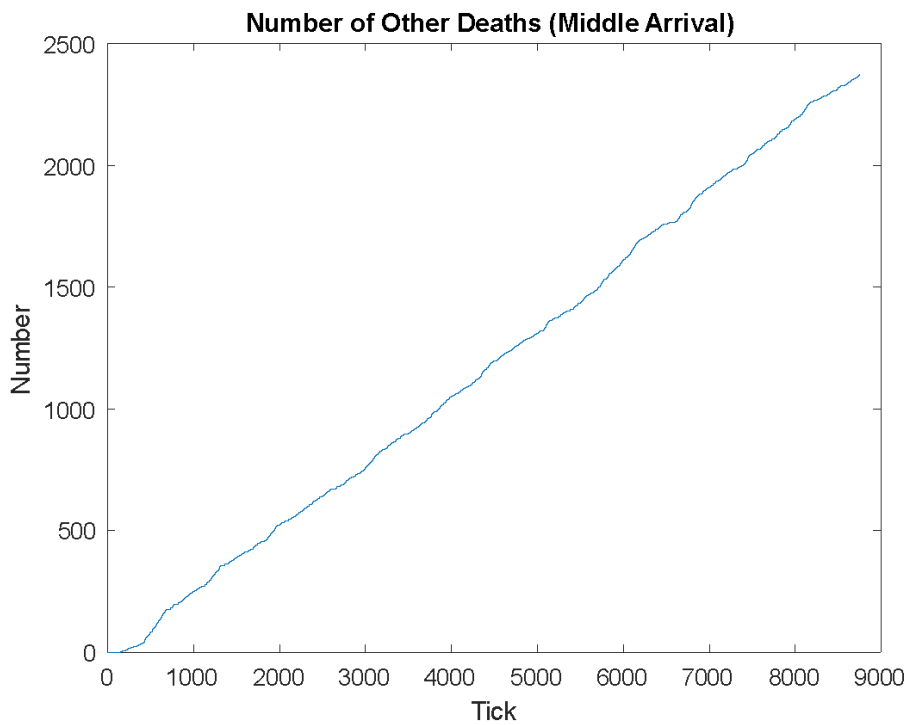


Figure L: Graph of number of other deaths vs. time (ticks) for Armstrong Hospital at middle patient arrival rate.

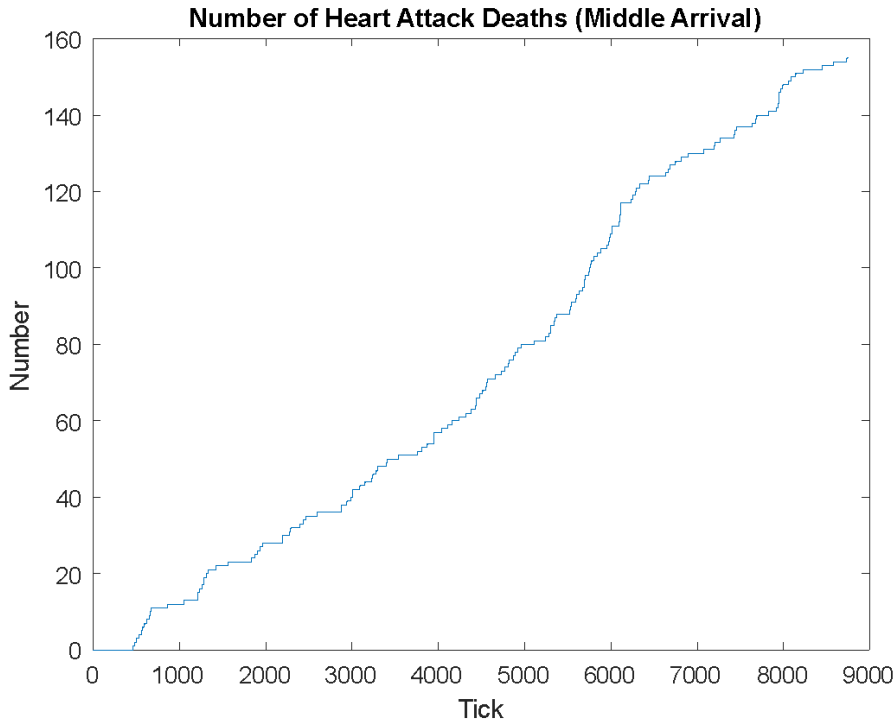


Figure M: Graph of number of heart attack deaths vs. time (ticks) for Armstrong Hospital at middle patient arrival rate.

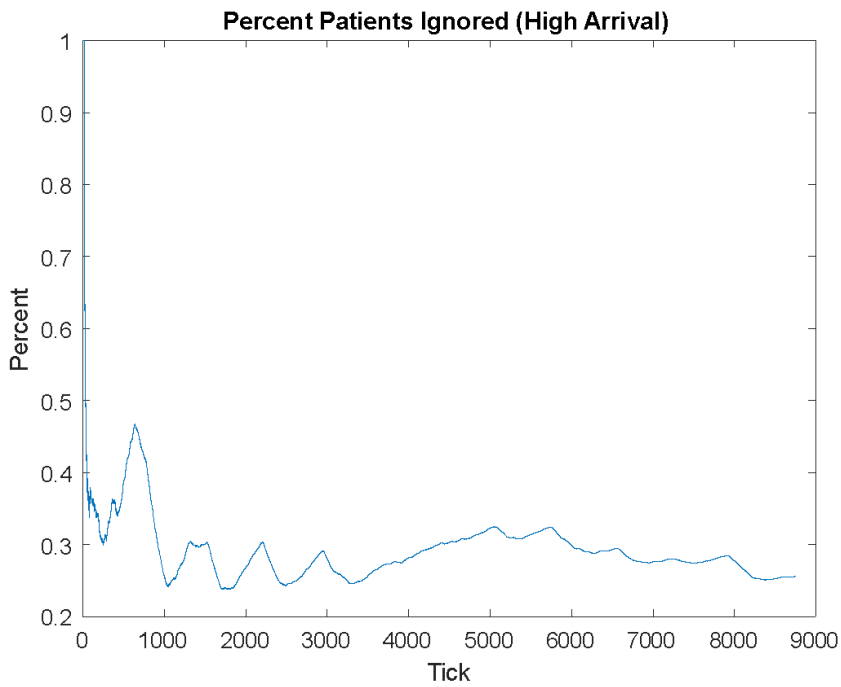


Figure N: Graph of percent of patients ignored vs. time (ticks) for Armstrong Hospital at high patient arrival rate.

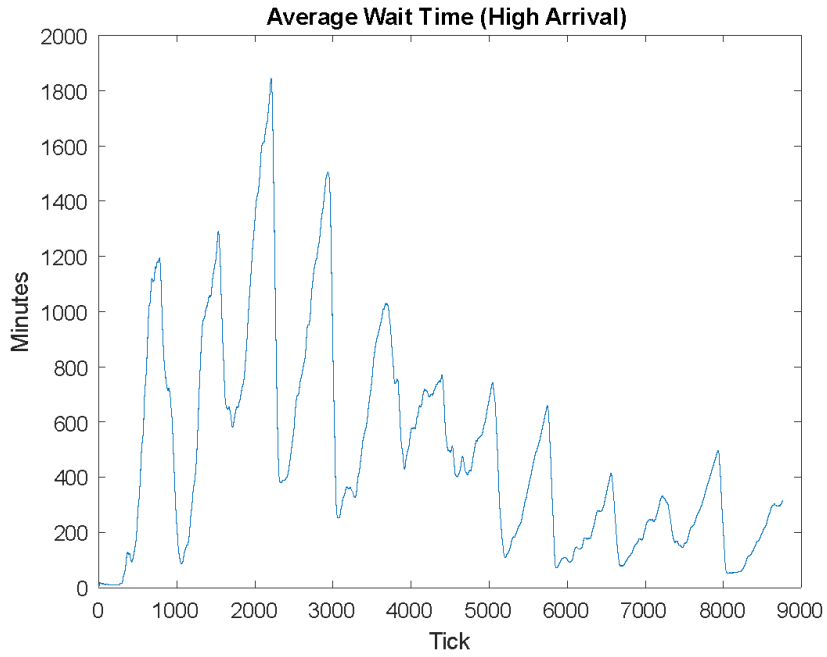


Figure O: Graph of average wait time (minutes) vs. time (ticks) for Armstrong Hospital at high patient arrival rate.

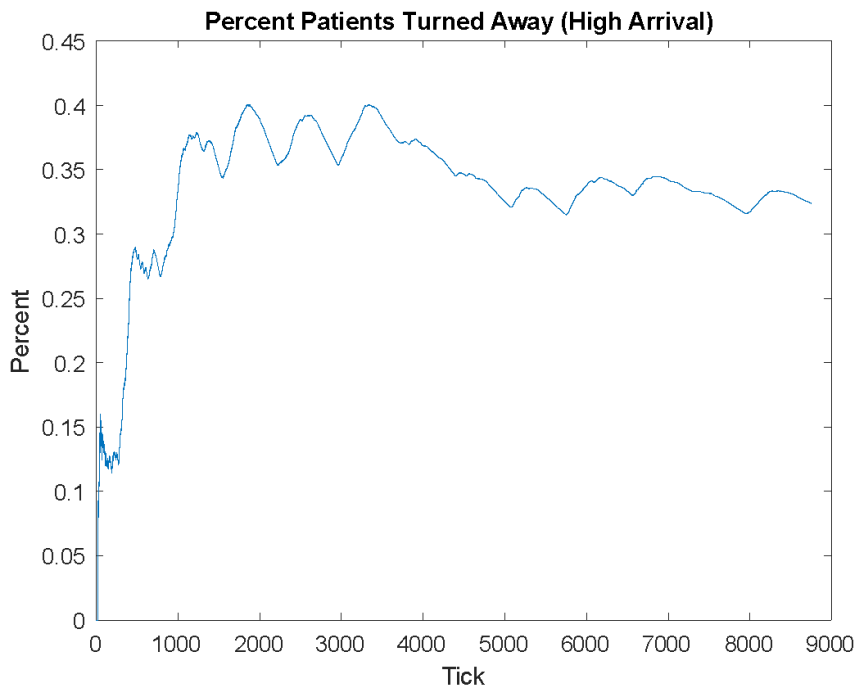


Figure P: Graph of percent of patients turned away vs. time (ticks) for Armstrong Hospital at high patient arrival rate.

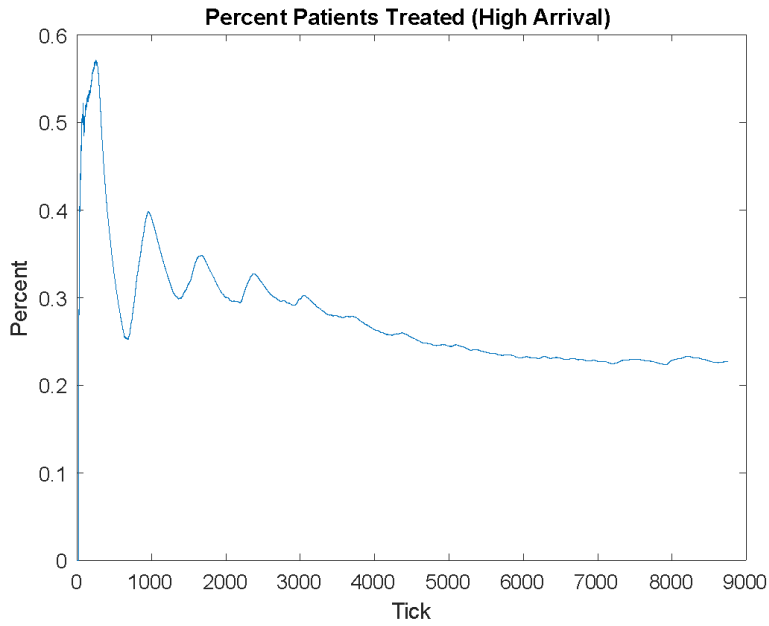


Figure Q: Graph of percent of patients treated vs. time (ticks) for Armstrong Hospital at high patient arrival rate.

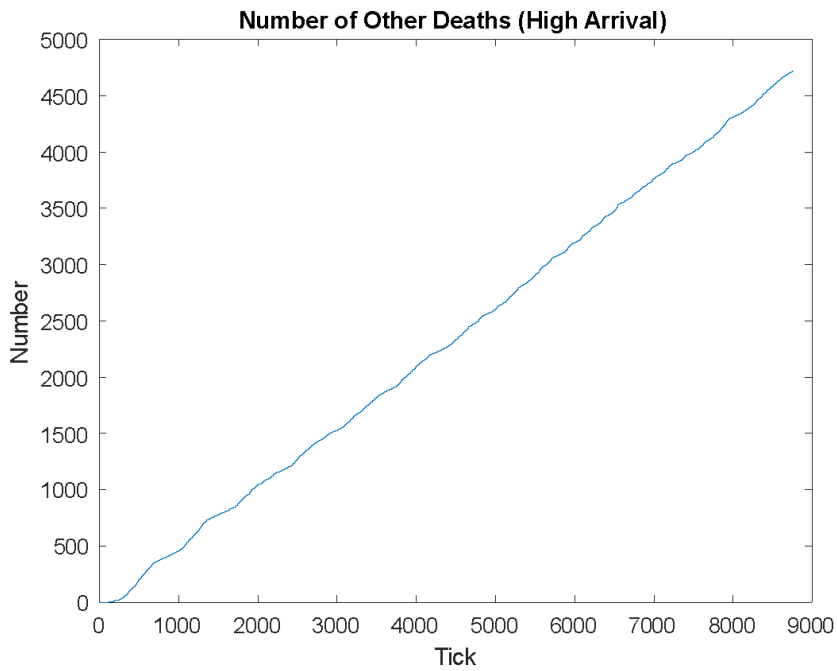


Figure R: Graph of number of other deaths vs. time (ticks) for Armstrong Hospital at high patient arrival rate.

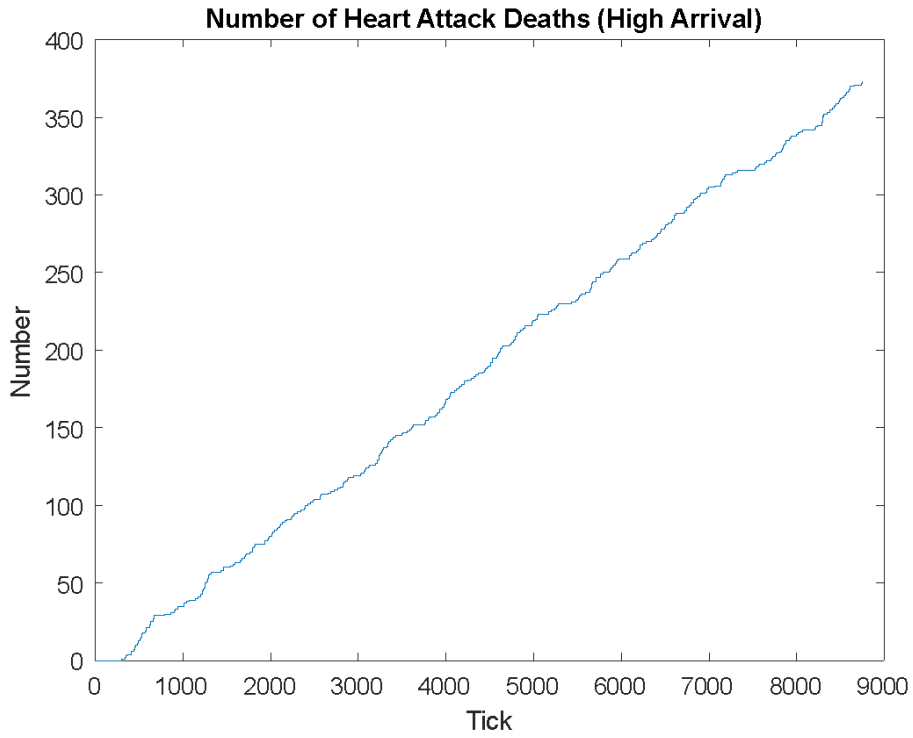


Figure S: Graph of number of heart attack deaths vs. time (ticks) for Armstrong Hospital at a high patient arrival rate.