

Supplementary Figure 5 (S5): Armstrong Hospital Clinic Data

Heart Attacks at Armstrong Hospital with Co-Located Primary Clinic at Different Capacities

	12	20	28	36	44	52	60	68	76
Low Patient Arrival	5 ± 2.7	6.75 ± 3.2	9.75 ± 1.7	6.5 ± 2.52	7.25 ± 3.95	6.5 ± 3.70	9.25 ± 4.92	5.75 ± 2.63	6.25 ± 1.28
Middle Patient Arrival	203.75 ± 12.18	206 ± 16.71	204.25 ± 11.81	207.25 ± 8.06	206.25 ± 4.57	211.75 ± 19.1	191.25 ± 18.1	203.25 ± 11.24	201.25 ± 6.65
High Patient Arrival	405.75 ± 13.5	408.5 ± 5.8	407.75 ± 20.53	384.5 ± 5.74	402.25 ± 9.18	390.75 ± 18.30	401.75 ± 12.09	397 ± 36.83	395.5 ± 15.42

Figure A: Armstrong Hospital heart attack frequencies with the addition of the primary clinic at varying capacities.

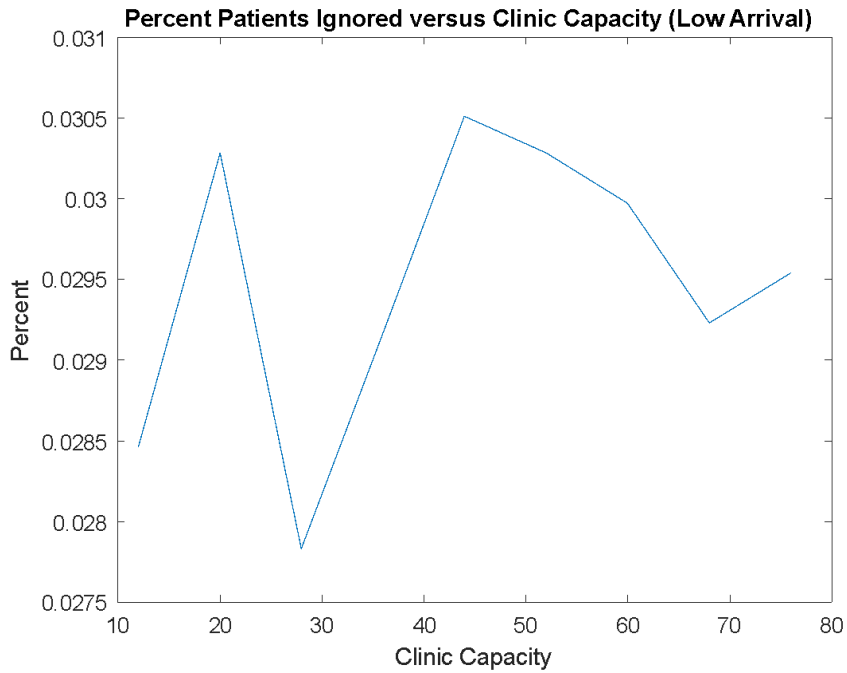


Figure B: Graph of percent of patients ignored vs. clinic capacity for Armstrong Hospital at a middle patient arrival rate.

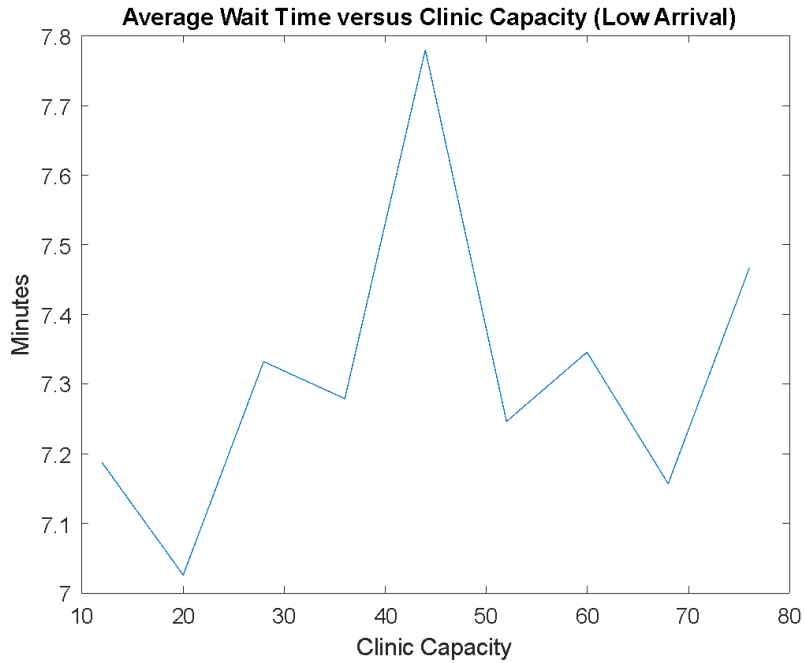


Figure C: Graph of time elapsed (minutes) vs. clinic capacity for Armstrong Hospital with the addition of the primary clinic at a low patient arrival rate.

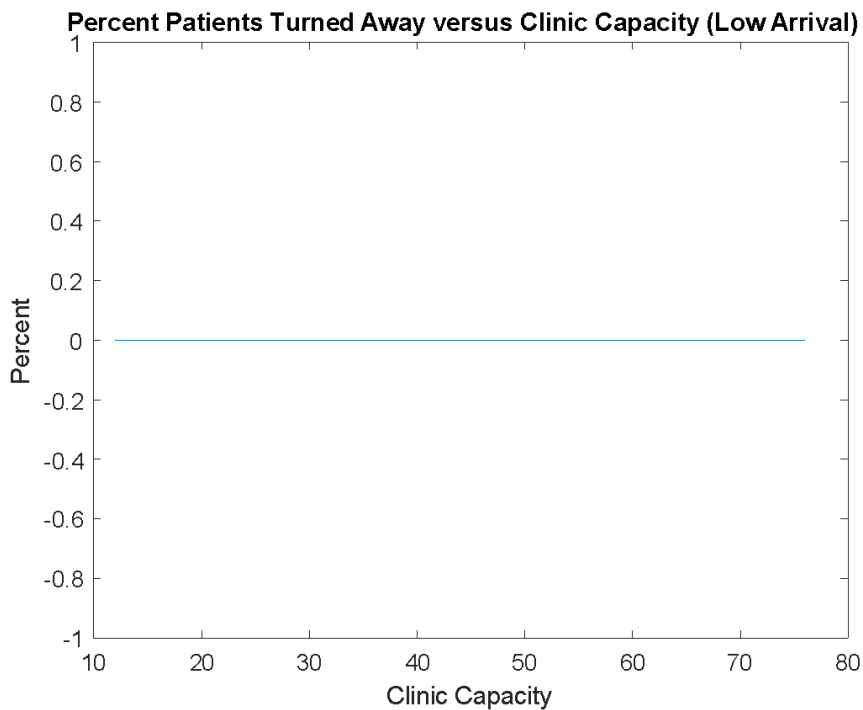


Figure D: Graph of percent of patients turned away vs. clinic capacity for Armstrong Hospital.

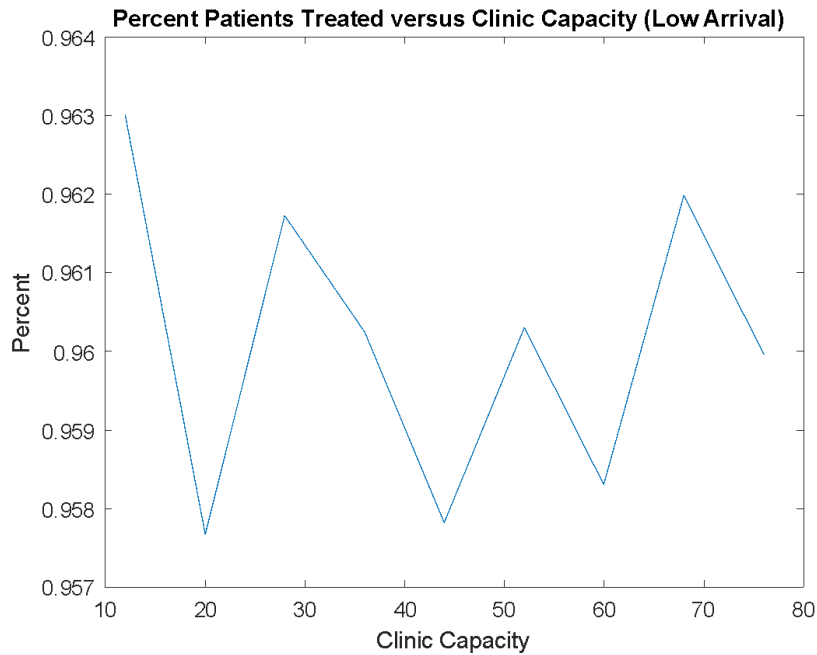


Figure E: Graph of percent of patients treated vs. clinic capacity for Armstrong Hospital at a low arrival rate.

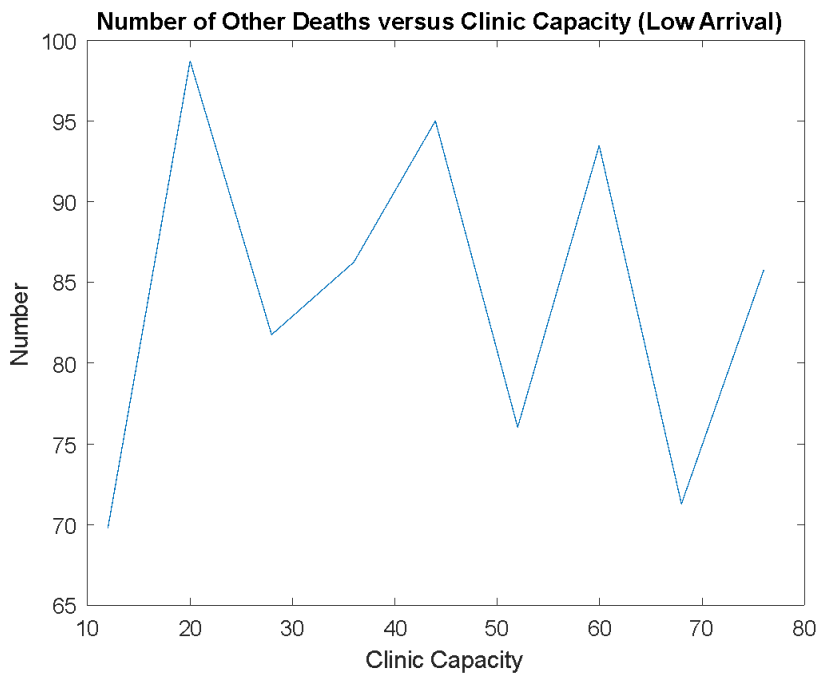


Figure F: Graph of number of other deaths vs. clinic capacity for Armstrong Hospital at a low patient arrival rate.

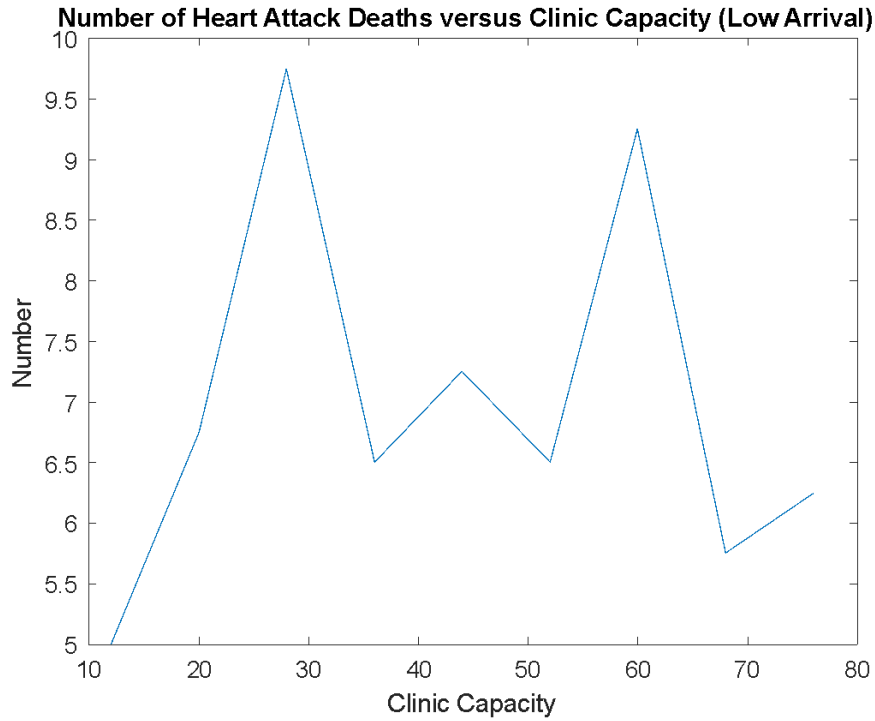


Figure G: Graph of number of heart attack deaths vs. clinic capacity for Armstrong Hospital at a low patient arrival rate.

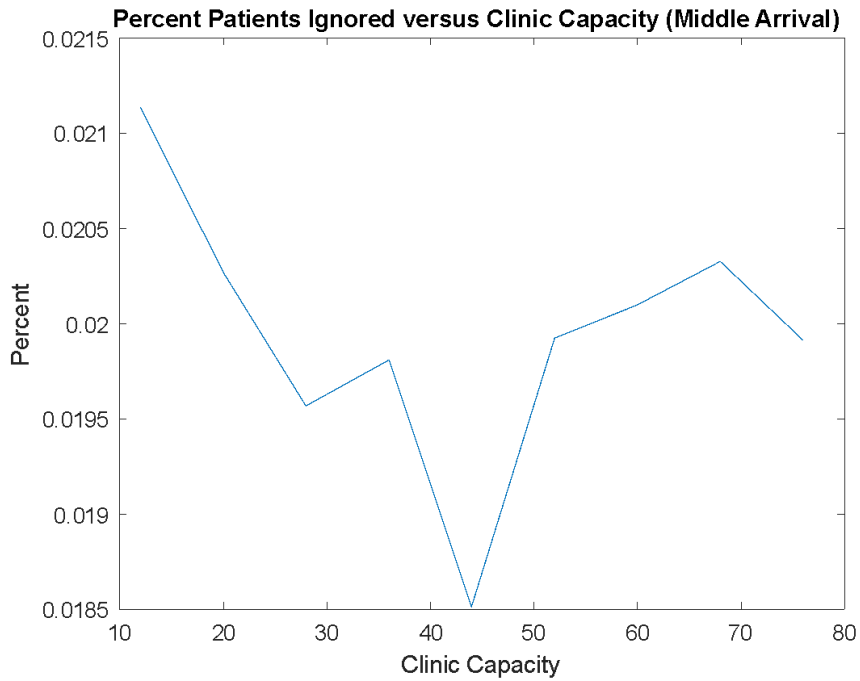


Figure H: Graph of percent of patients ignored vs. clinic capacity for Armstrong Hospital at a middle patient arrival rate.

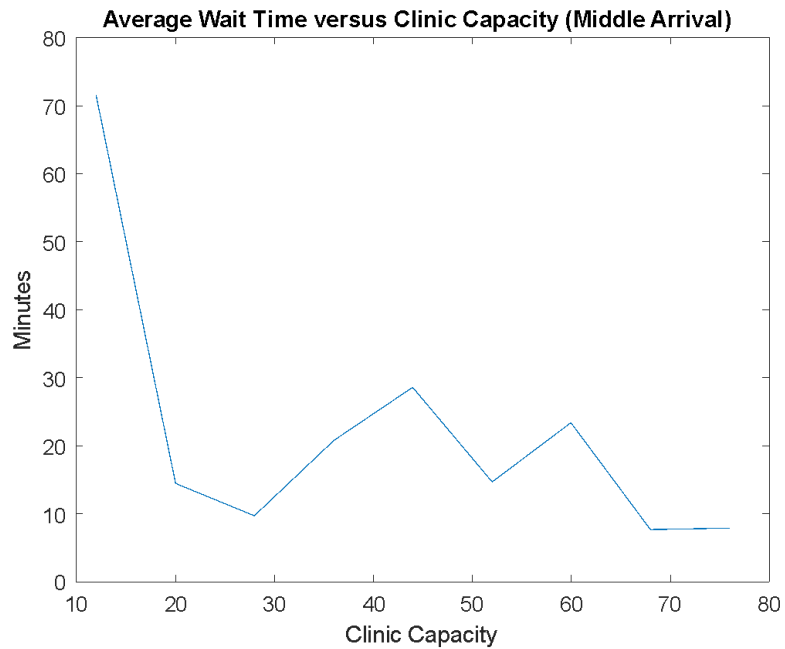


Figure I: Graph of average wait time in minutes vs. clinic capacity for Armstrong Hospital at a middle patient arrival rate.

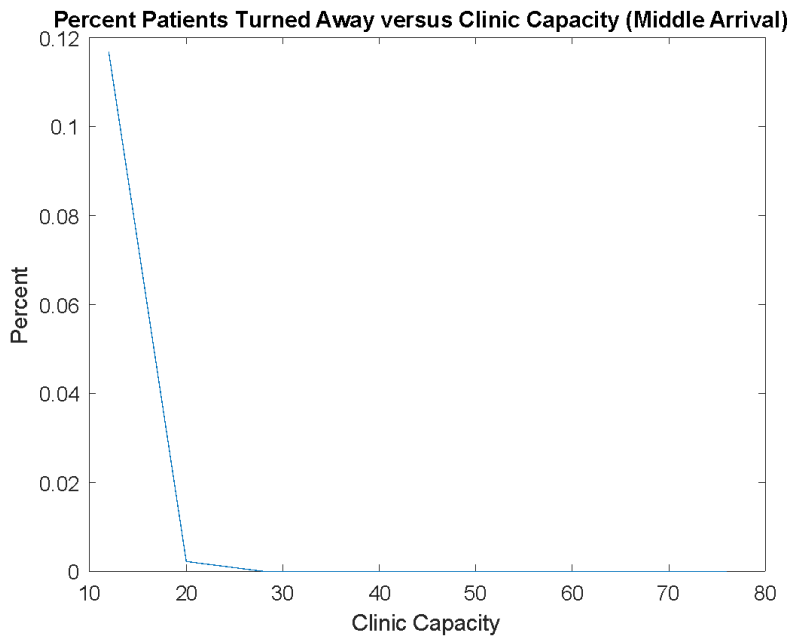


Figure J: Graph of percent of patients turned away vs. clinic capacity for Armstrong Hospital at middle patient arrival rate.

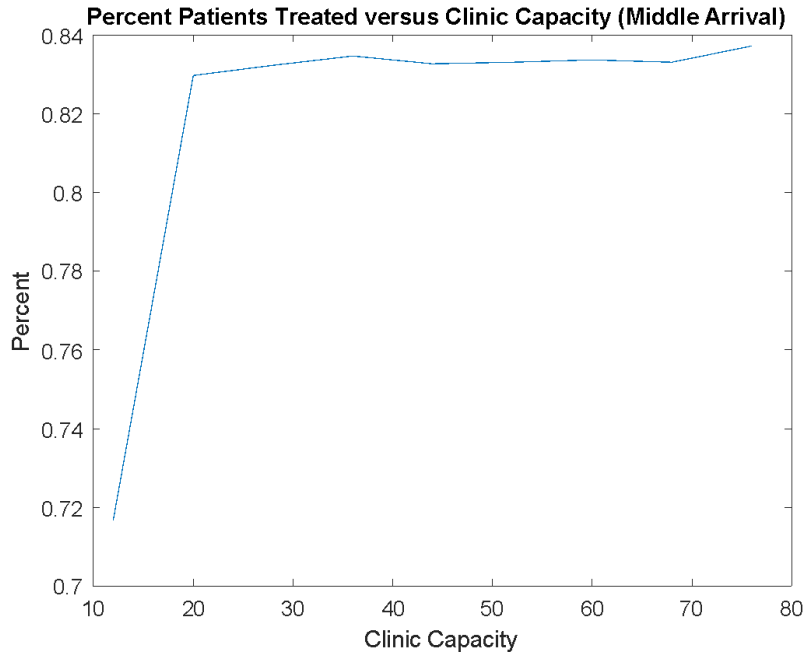


Figure K: Graph of percent of patients treated vs. clinic capacity for Armstrong Hospital at middle patient arrival rate.

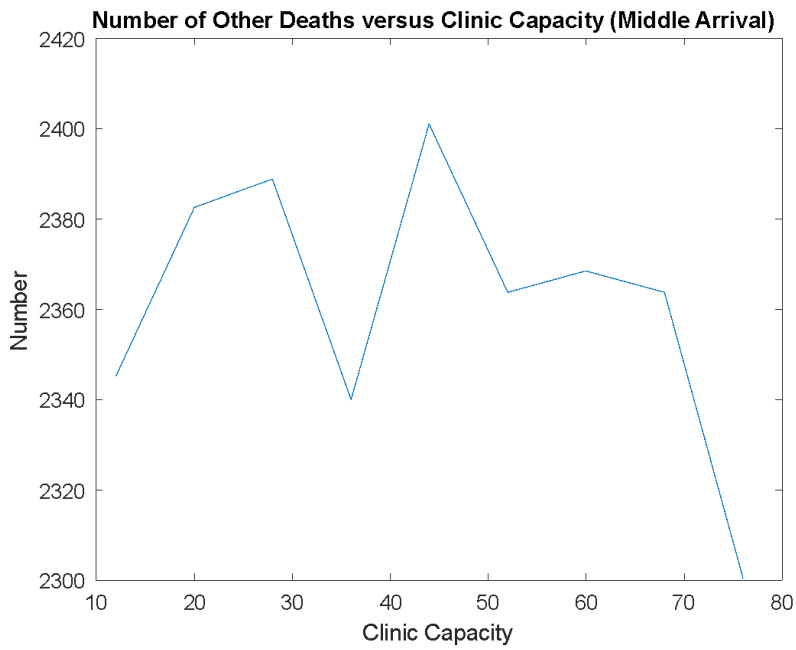


Figure L: Graph of number of other deaths vs. clinic capacity for Armstrong Hospital at middle patient arrival rate.

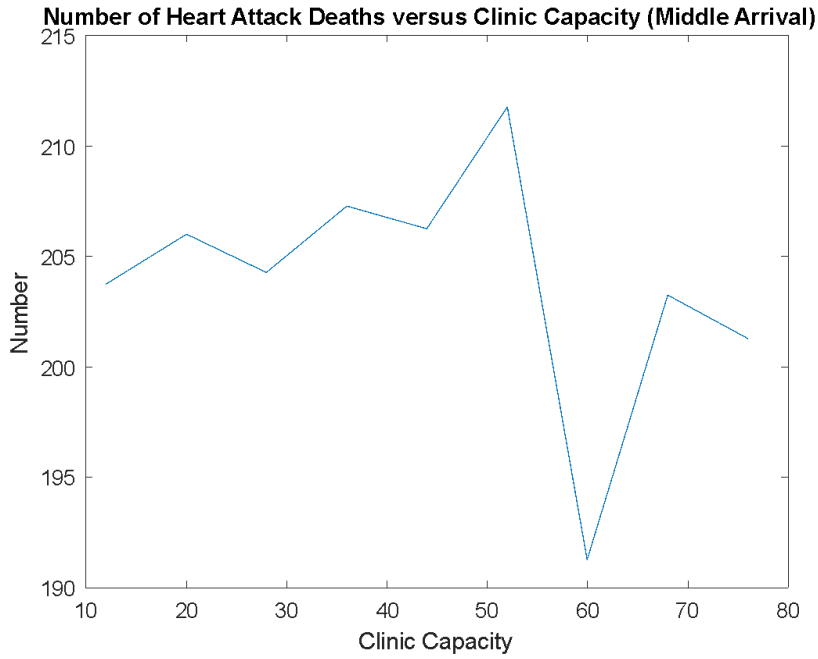


Figure M: Graph of number of heart attack deaths vs. clinic capacity for Armstrong Hospital at middle patient arrival rate.

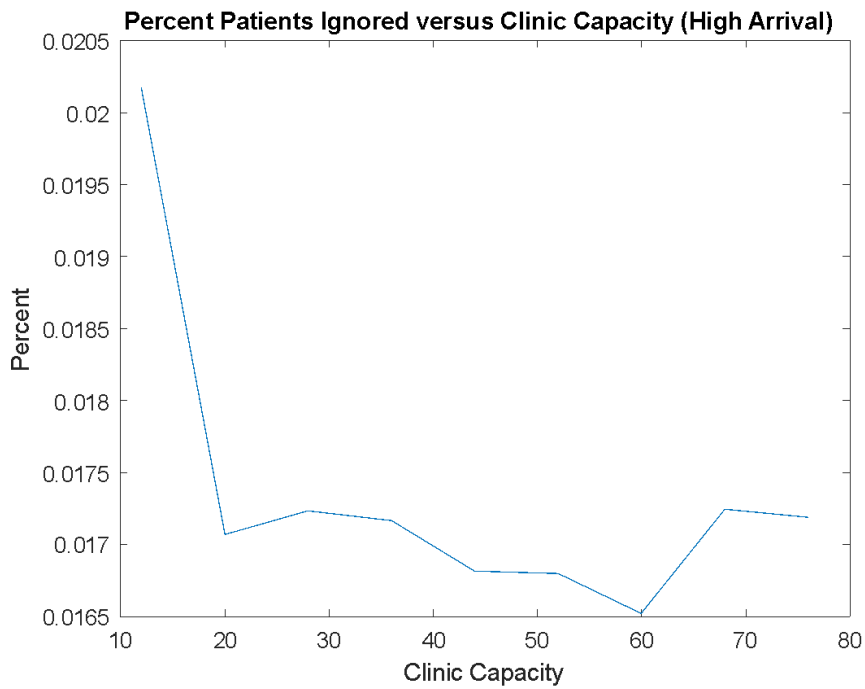


Figure N: Graph of percent of patients ignored vs. clinic capacity for Armstrong Hospital at high patient arrival rate.

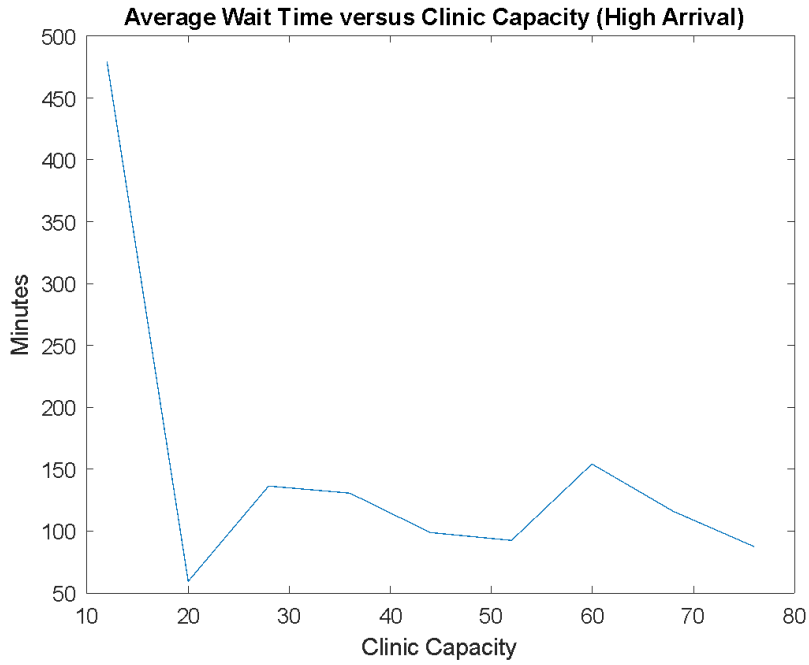


Figure O: Graph of average wait time in minutes vs. clinic capacity at Armstrong Hospital at a high patient arrival rate.

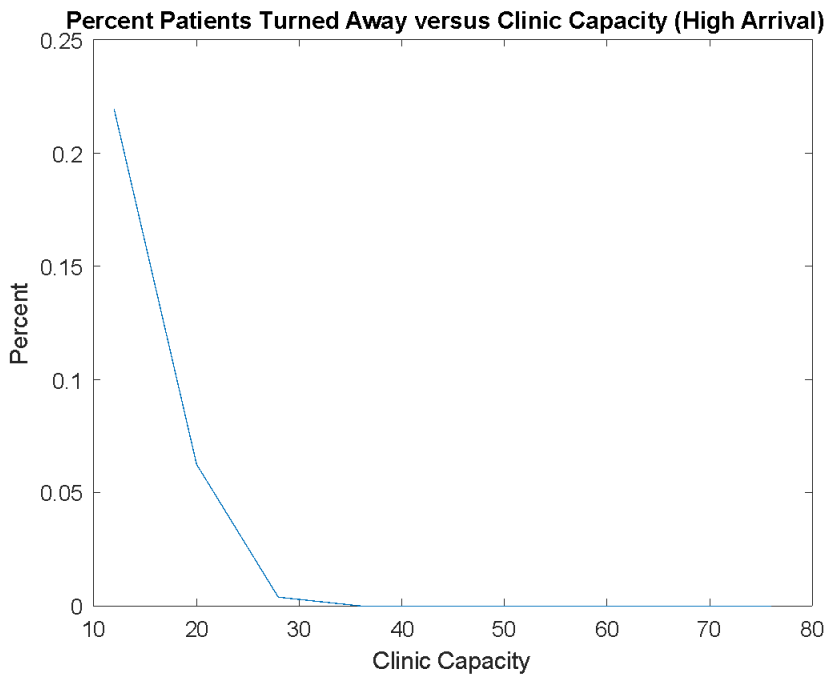


Figure P: Graph of percent of patients turned away vs. clinic capacity for Armstrong Hospital at a high patient arrival rate.

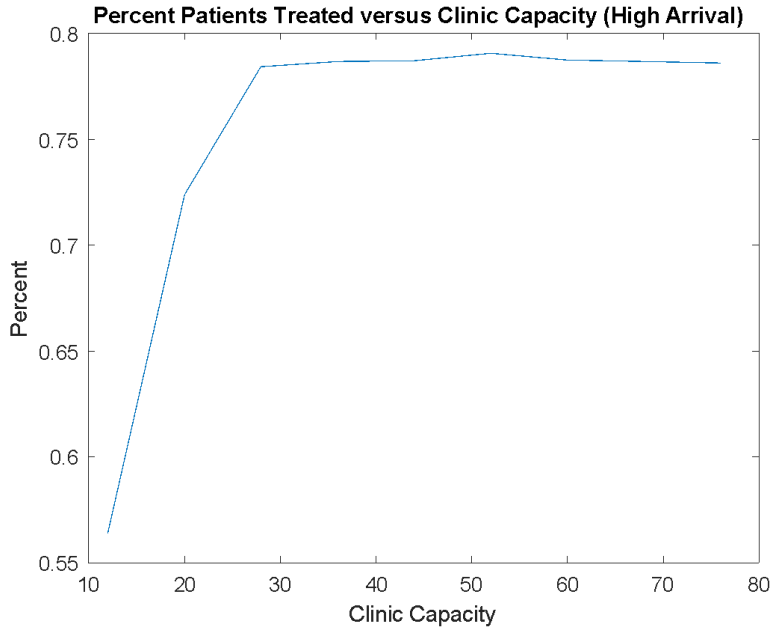


Figure Q: Graph of percent of patients treated vs. clinic capacity at Armstrong Hospital at a high patient arrival rate.

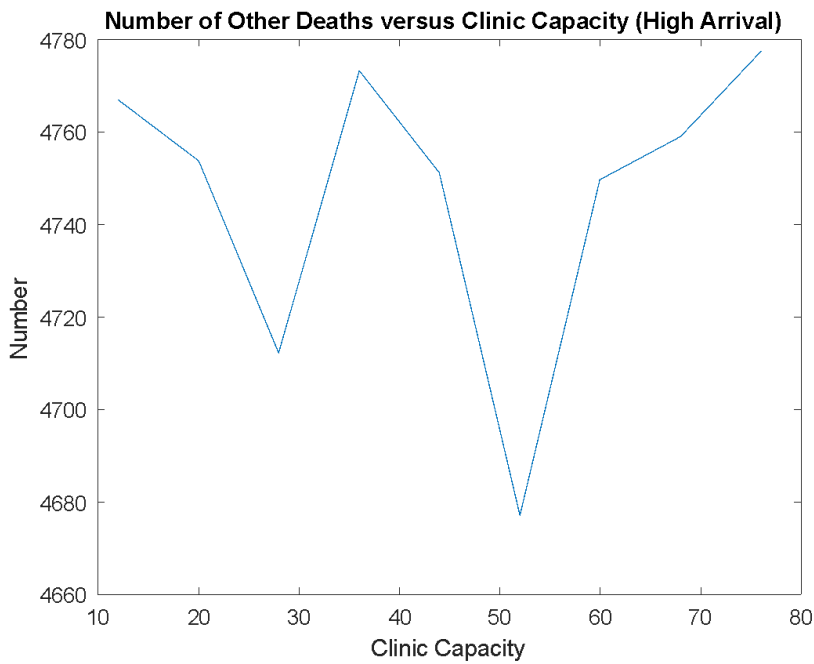


Figure R: Graph of number of other deaths vs. clinic capacity for Armstrong Hospital at a high patient arrival rate.

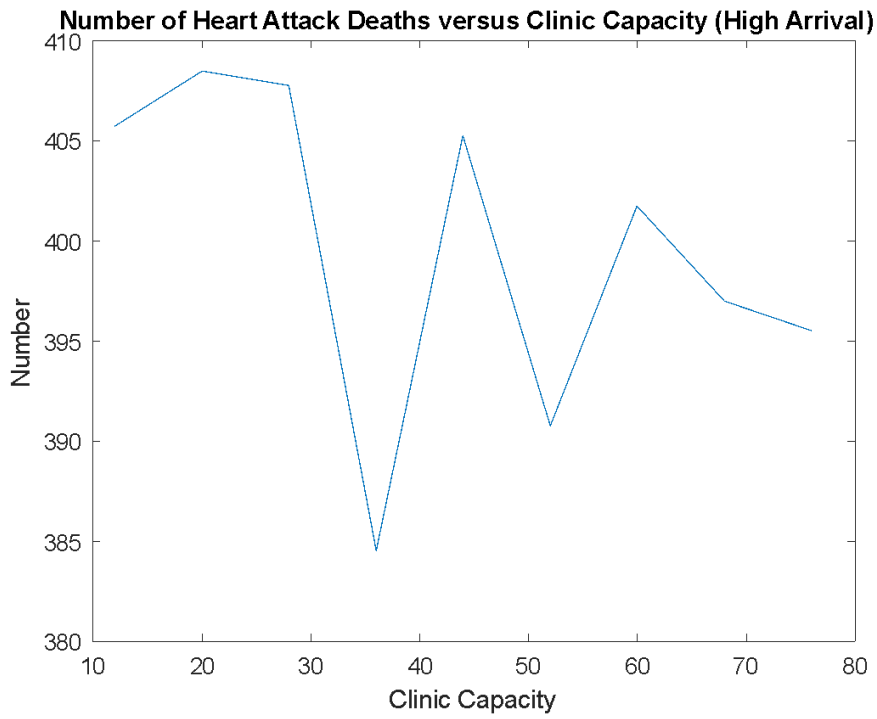


Figure S: Graph of number of heart attack deaths vs. clinic capacity for Armstrong Hospital at a high patient arrival rate.