

Supplementary Figure 6 (S6): Armstrong Hospital Telehealth Data

Heart Attacks at Armstrong Hospital with Telehealth Outputs at a Different Capacities

	24	40	56	72	88	104	120	136	152
Low Patient Arrival	8.25 ± 2.06	9 ± 2.16	4.25 ± 1.71	7.25 ± 3.20	7.5 ± 4.20	6.75 ± 2.75	7.5 ± 4.51	9 ± 2.94	7 ± 6.16
Middle Patient Arrival	199.75 ± 8.18	201.25 ± 17.76	199.75 ± 24.6	197.25 ± 13.07	196.5 ± 12.79	185.5 ± 7.68	200.25 ± 17.11	187 ± 5.35	192 ± 17.7
High Patient Arrival	420 ± 19.85	398.75 ± 8.06	396.75 ± 9.64	392.75 ± 16.6	401.5 ± 21.76	398.25 ± 15.39	391.25 ± 13.07	391.5 ± 4.51	420.75 ± 22.14

Figure A: Table of heart attack data for Armstrong Hospital with telehealth at different capacities for different patient arrival rates.

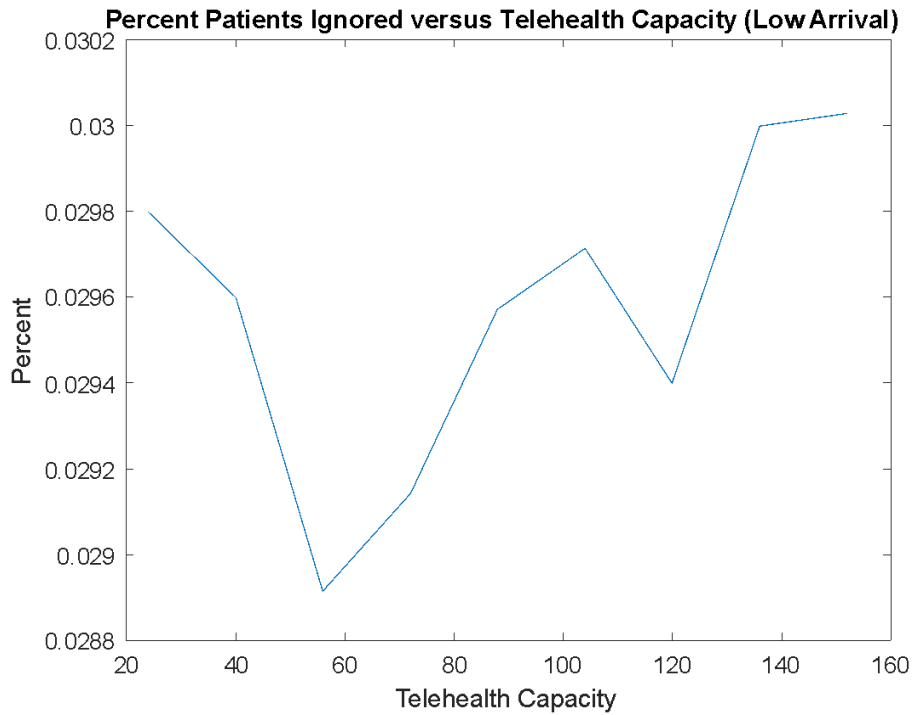


Figure B: Graph of percent of patients ignored vs. telehealth capacity for Armstrong Hospital at a low patient arrival rate.

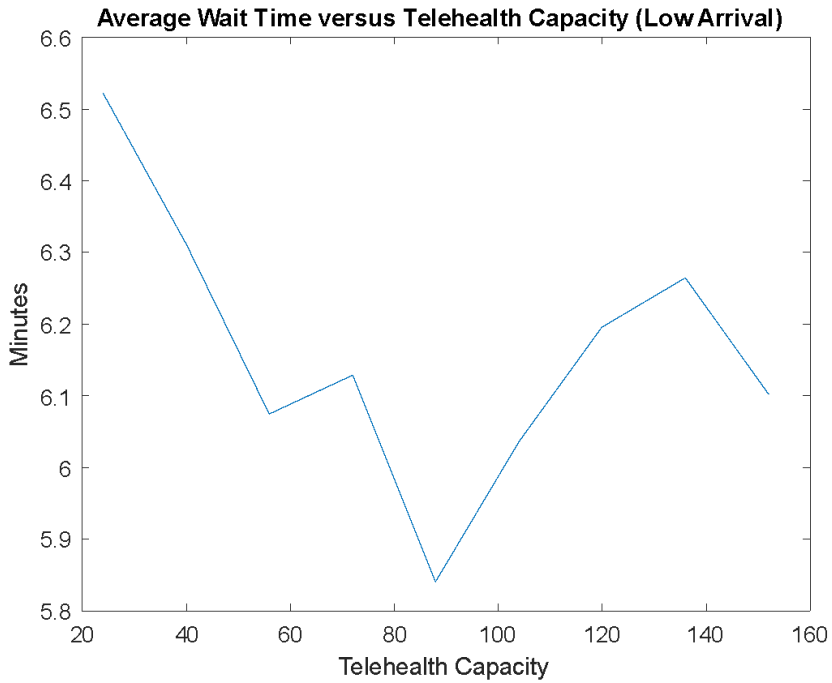


Figure C: Graph of average wait time (minutes) vs. telehealth capacity for Armstrong Hospital at a low patient arrival rate.

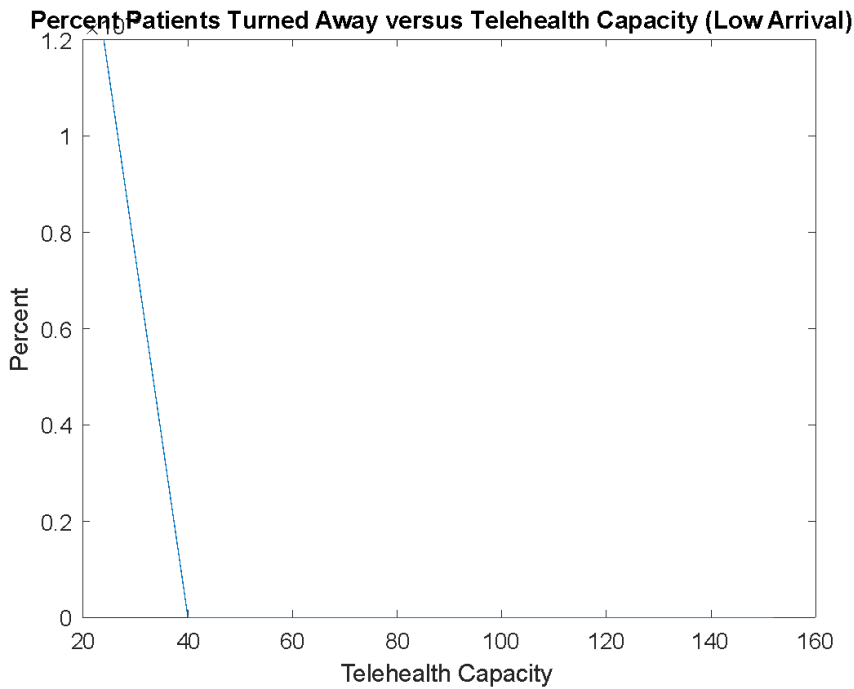


Figure D: Graph of percent of patients turned away vs. telehealth capacity for Armstrong Hospital at a low patient arrival rate.

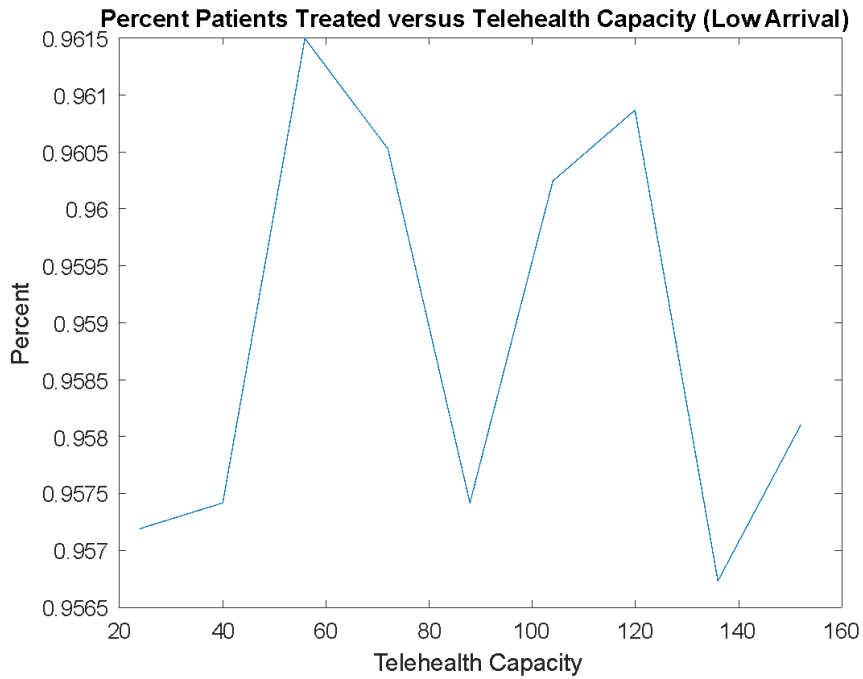


Figure E: Graph of percent of patients treated vs. telehealth capacity for Armstrong Hospital at a low patient arrival rate.

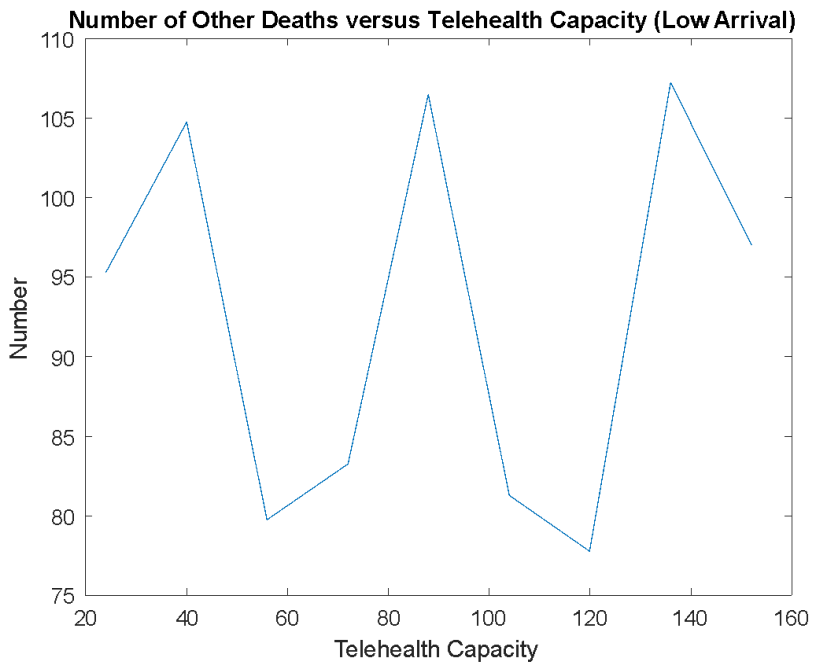


Figure F: Graph of number of other deaths vs. telehealth capacity for Armstrong Hospital at a low patient arrival rate.

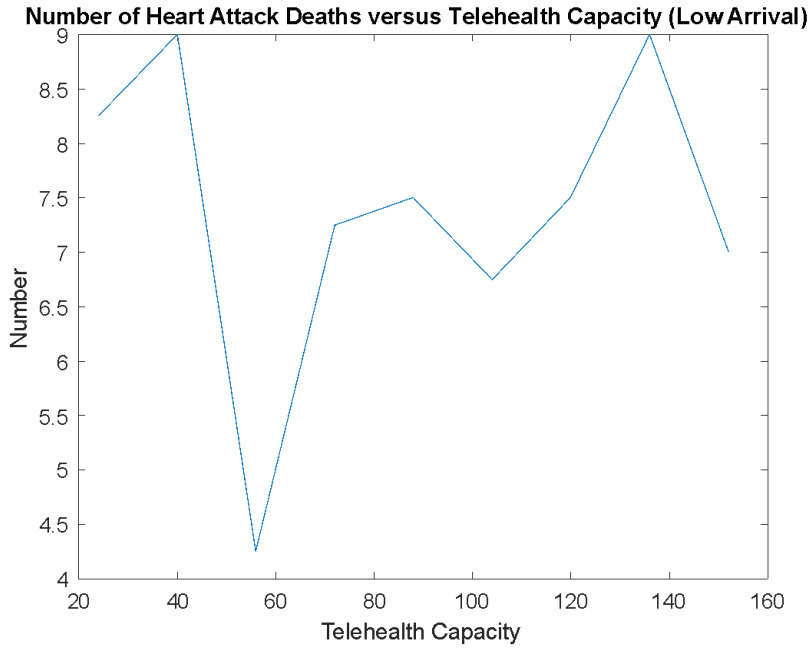


Figure G: Graph of number of heart attack deaths vs. telehealth capacity for Armstrong Hospital at a low patient arrival rate.

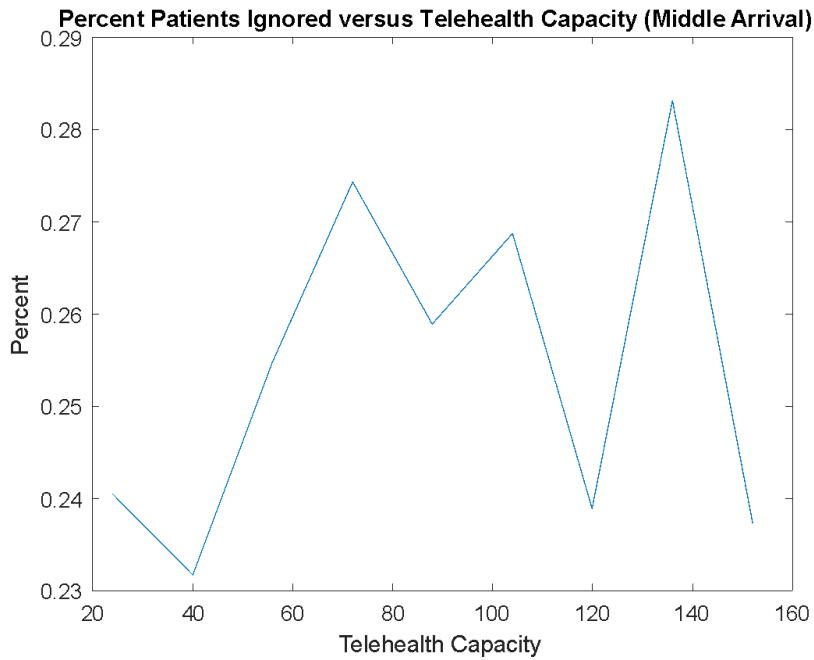


Figure H: Graph of percent of patients ignored vs. telehealth capacity for Armstrong Hospital at a middle patient arrival rate.

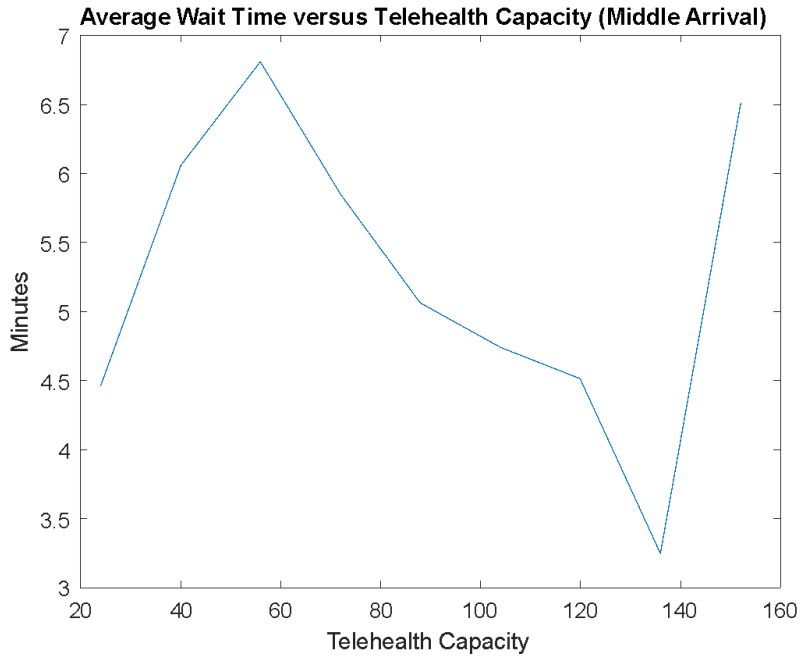


Figure I: Graph of average wait time (minutes) vs. telehealth capacity for Armstrong Hospital at middle patient arrival rate.

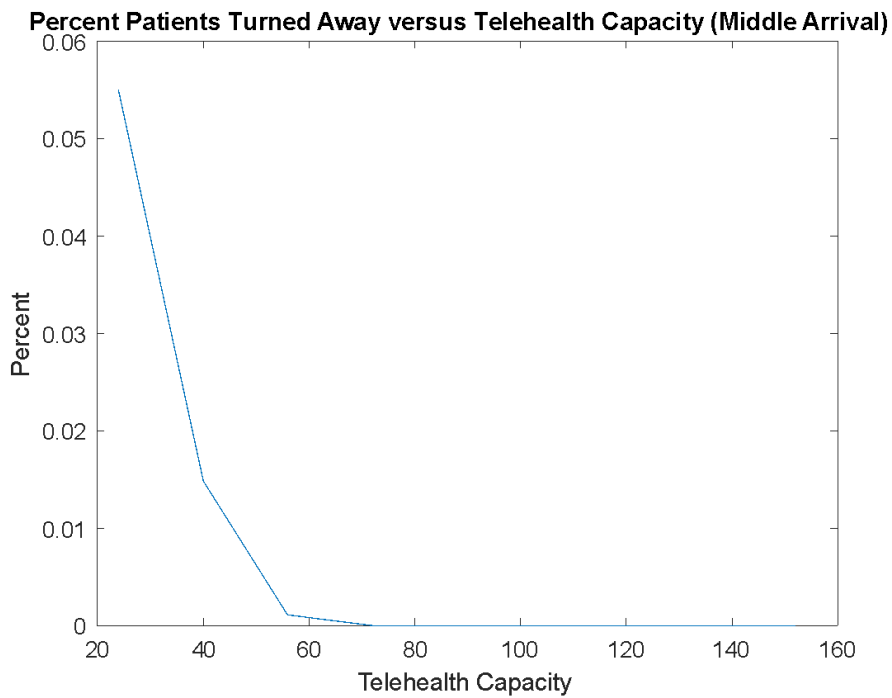


Figure J: Graph of percent of patients turned away vs. telehealth capacity for Armstrong Hospital at middle patient arrival rate.

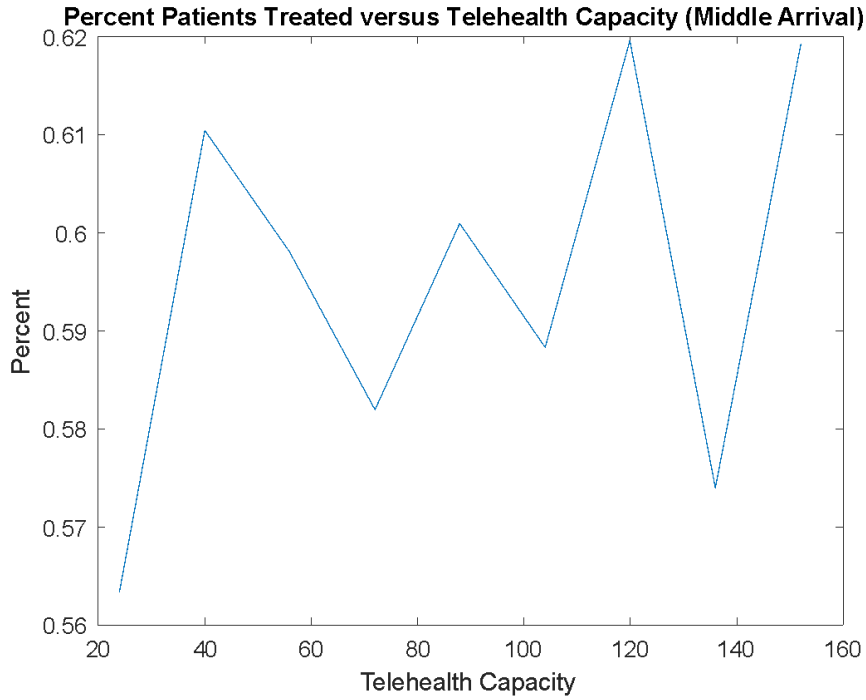


Figure K: Graph of percent of patients treated vs. telehealth capacity for Armstrong Hospital at a middle patient arrival rate.

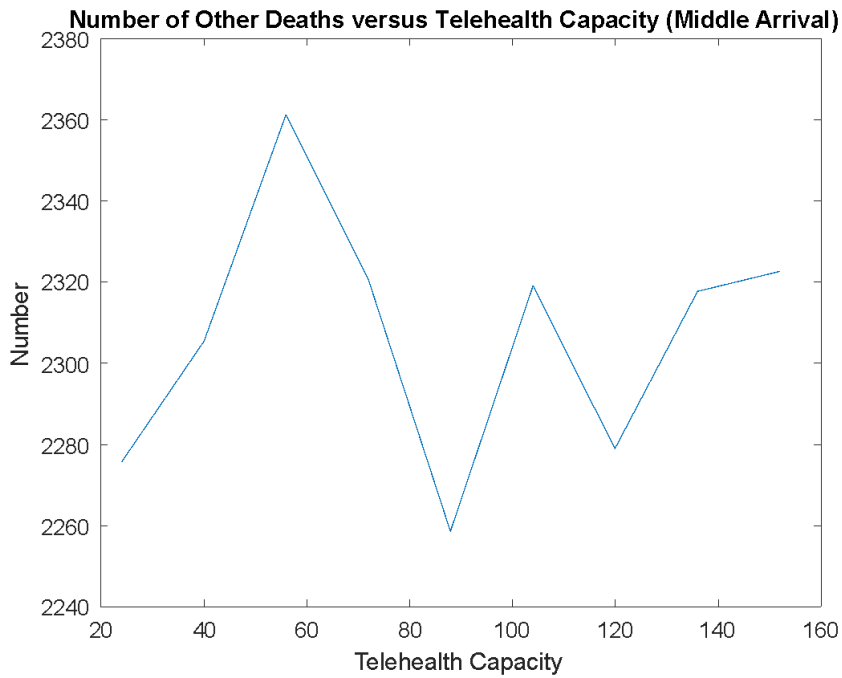


Figure L: Graph of number of other deaths vs. telehealth capacity for Armstrong Hospital at middle patient arrival rate.

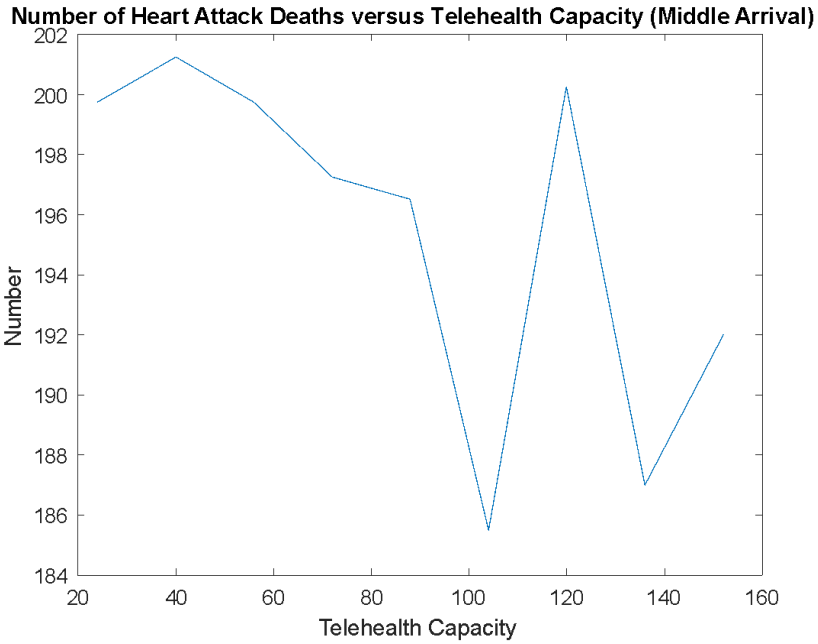


Figure M: Graph of number of heart attack deaths vs. telehealth capacity for Armstrong Hospital at middle patient arrival rate.

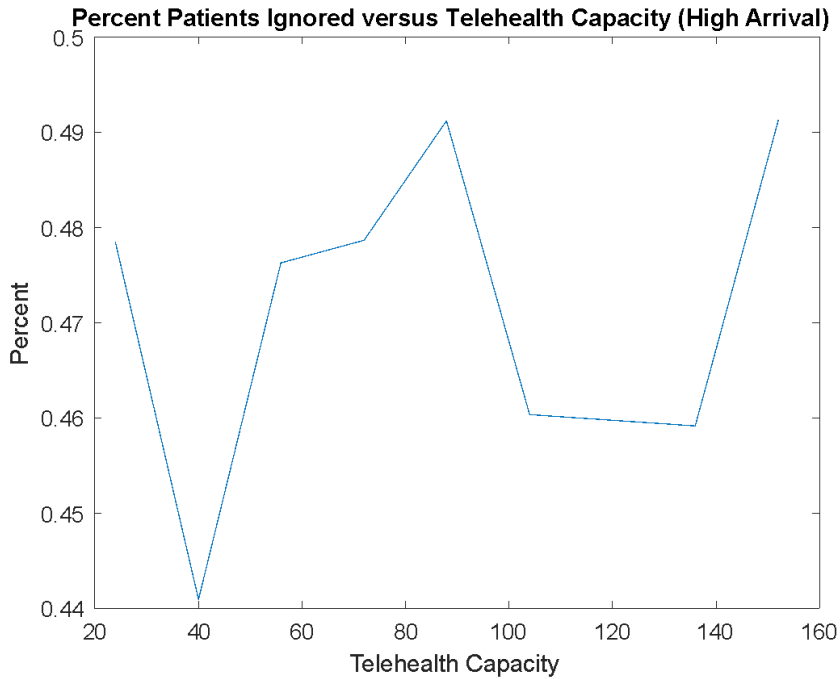


Figure N: Graph of percent of patients ignored vs. telehealth capacity for Armstrong Hospital at a high patient arrival rate.

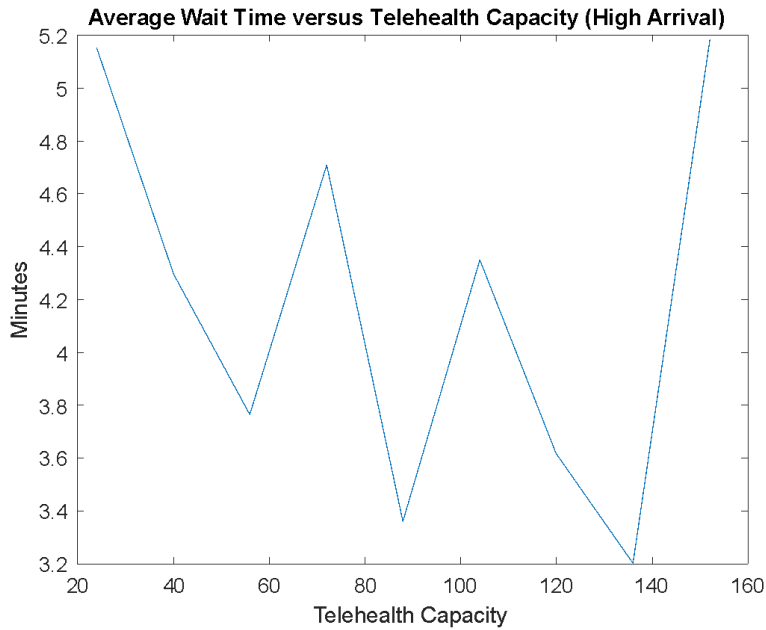


Figure O: Graph of average wait time (minutes) vs. telehealth capacity for Armstrong Hospital at high patient arrival rate.

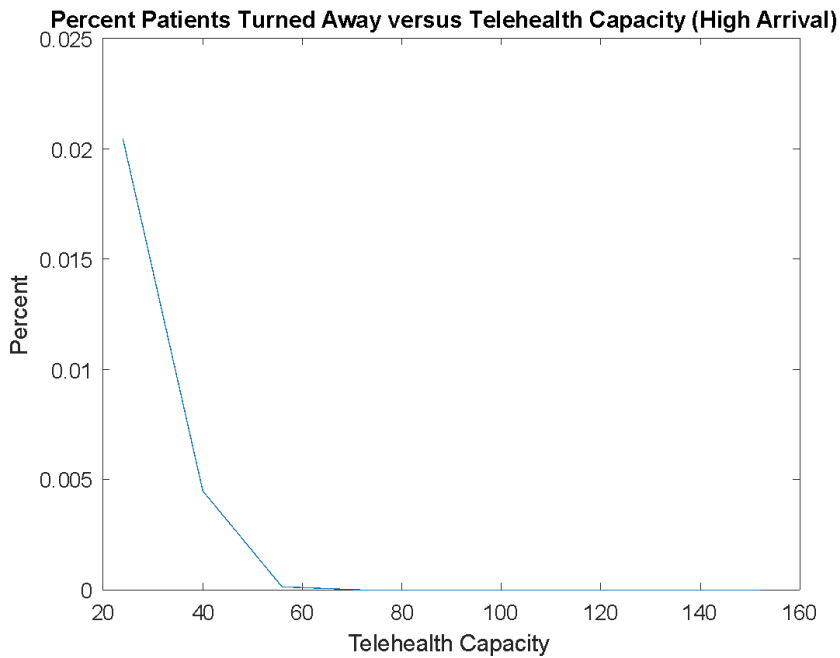


Figure P: Graph of percent of patients turned away vs. telehealth capacity for Armstrong Hospital at high patient arrival rate.

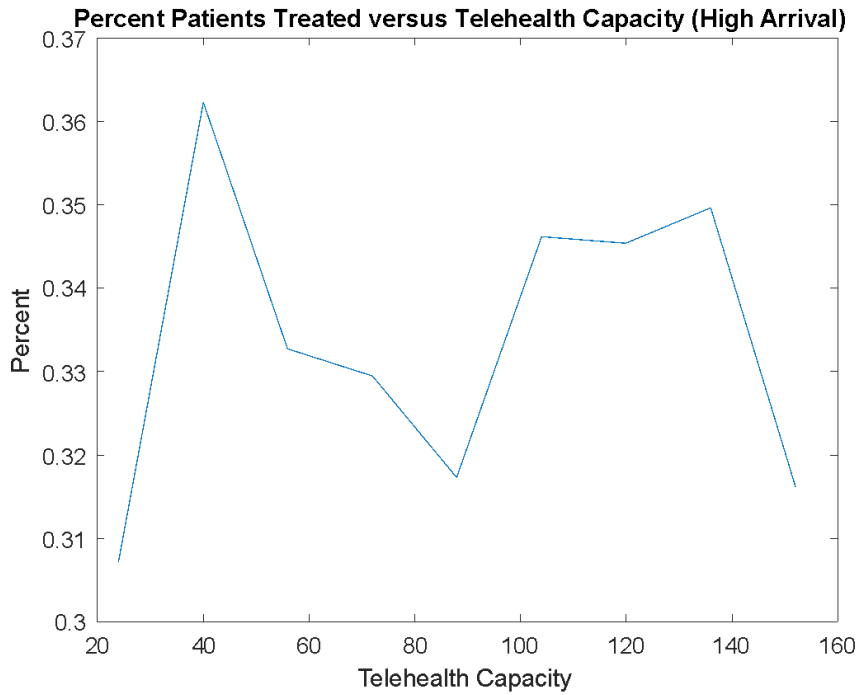


Figure Q: Graph of percent of patients treated vs. telehealth capacity for Armstrong Hospital at high patient arrival rate.

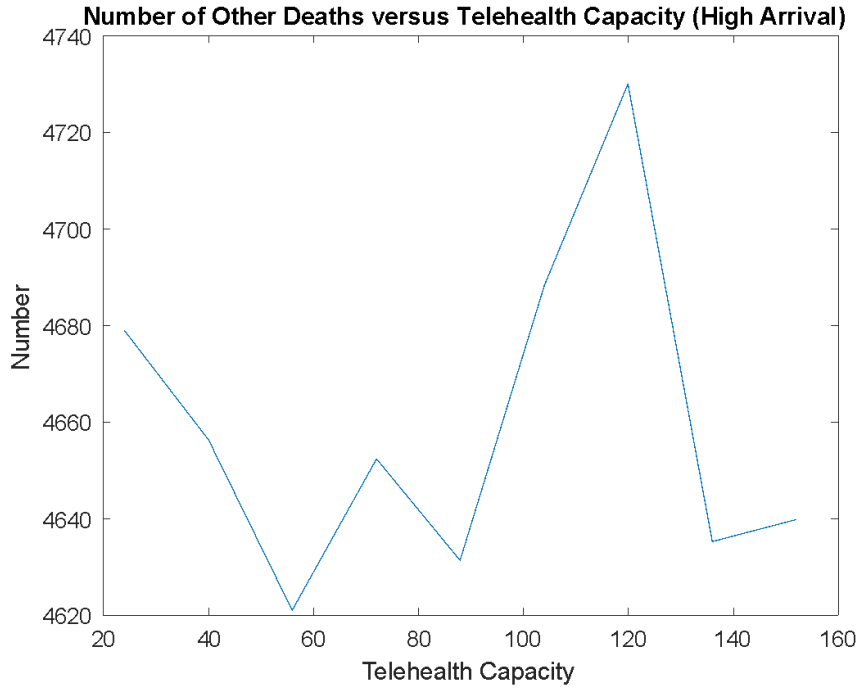


Figure R: Graph of number of other deaths vs. telehealth capacity for Armstrong Hospital at high patient arrival rate.

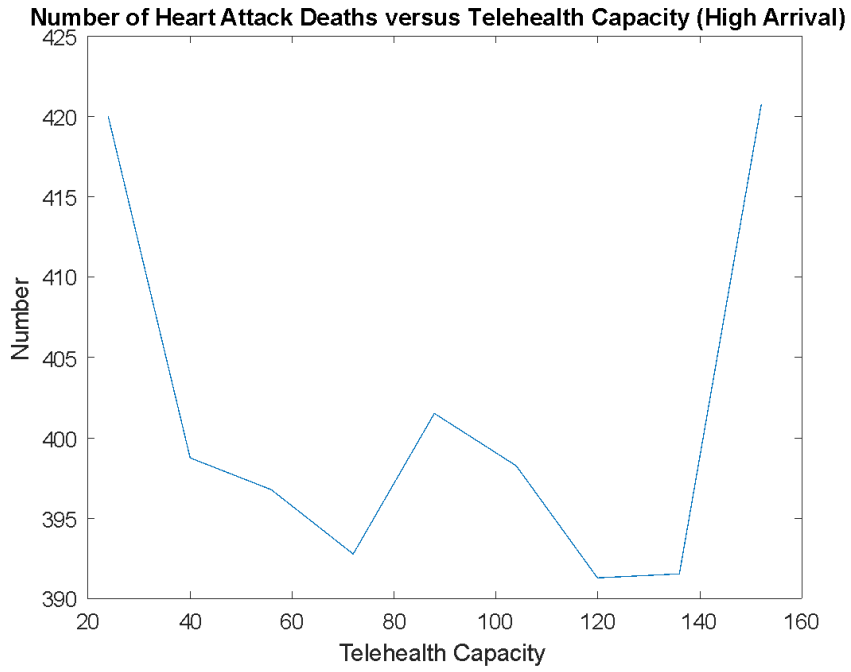


Figure S: Graph of number of heart attack deaths vs. telehealth capacity for Armstrong Hospital at high patient arrival rate.