

**The Science of Chance: Exploring the Connection Between Engineering Design and
Gambling**

A Research Paper Submitted to the Department of Engineering and Society

Presented to the Faculty of the School of Engineering and Applied Science
University of Virginia • Charlottesville, Virginia

In Partial Fulfillment of the Requirements of the Degree
Bachelor of Science, School of Engineering

Ian Chang

Spring 2024

On my honor as a University Student, I have neither given nor received unauthorized aid on this
assignment as defined by the Honor Guidelines for Thesis-Related Assignments

ADVISOR

Richard D. Jacques, Department of Engineering and Society

Introduction

Gambling, a multifaceted phenomenon that intertwines chance, skill, and psychological engagement, has been ingrained in societies for centuries. From ancient dice games in the Indus Valley civilization, to modern-day casinos in Las Vegas, the thrill of uncertainty and the potential for gain has captivated millions. Over the years, with technological advancements, gambling has intertwined with digital platforms, leading to innovations such as online casinos and digital slot machines. In an environment like college, where students already grapple with stresses ranging from academics to social pressures, the attraction of such games raises many questions. How does gambling, and its digital counterparts, influence mental health? How do the psychological triggers used in gambling mechanics impact decision-making and financial behaviors in individuals? In 2022, a study conducted by the Problem Gambling New York State Resource Center revealed that about 75% of U.S. college students gambled during the past year, with 18% of students gambling on a weekly basis, and 6% of students reporting a serious gambling problem (Problem Gambling New York State Resource Center, 2022). This striking statistic highlights the growing concern over gambling behaviors among young adults, especially as elements of gambling are woven into a wide range of games that are perceived as harmless entertainment.

This paper argues that the sophisticated design of gambling devices and platforms, spanning from bright slot machines in casinos to the intuitive interfaces of sports betting apps, is not just a result of technological advancements. These devices and platforms are crafted with a purpose: to captivate users and encourage continued play by tapping into psychological principles to encourage addiction. This design approach, while clearly effective in attracting users, raises serious ethical concerns. It intentionally plays on human psychology, drawing on

our instinct for reward to encourage constant engagement. The deliberate strategy to engage users forces us to reflect on the ethical implications of these practices and the responsibilities of those who develop gambling technologies. This paper will investigate how gambling devices and platforms are intentionally designed to be addictive. It will also explore the ethical issues around creating products that prioritize keeping users engaged over their well-being. The research question guiding this inquiry is: How are gambling platforms designed to manipulate user behavior, and what ethical considerations arise from these practices? By examining the intersection of technology, psychology, and ethics, this paper aims to not only highlight the responsibilities of gambling developers, but also to introduce fundamental engineering guidelines for ethical design practices, ensuring user protection that extends beyond traditional approaches in the field.

Literature Review

Historical Context of Gambling

The trajectory of gambling, from its ancient origins tied to divination to its modern-day standard, has undergone significant evolution. Initially intertwined in spiritual practices, gambling gradually transformed into a leisure pursuit, with the establishment of the world's inaugural casinos in 17th-century Venice, Italy (Gambling - Chances, Probabilities, and Odds). This shift changed gambling from a strictly controlled vice to a widely accepted form of entertainment. The arrival of the internet further revolutionized gambling, making it accessible on an unprecedented scale, and transformed it into a global phenomenon. This historical journey not only highlights technological advancements, but also reflects changes in social norms and legal frameworks surrounding gambling.

The transition to the digital world has democratized gambling access and surpassed geographical constraints. This is evident from the widespread gambling patterns across various states, as depicted in Figure 1 below (American Gaming Association, 2023).

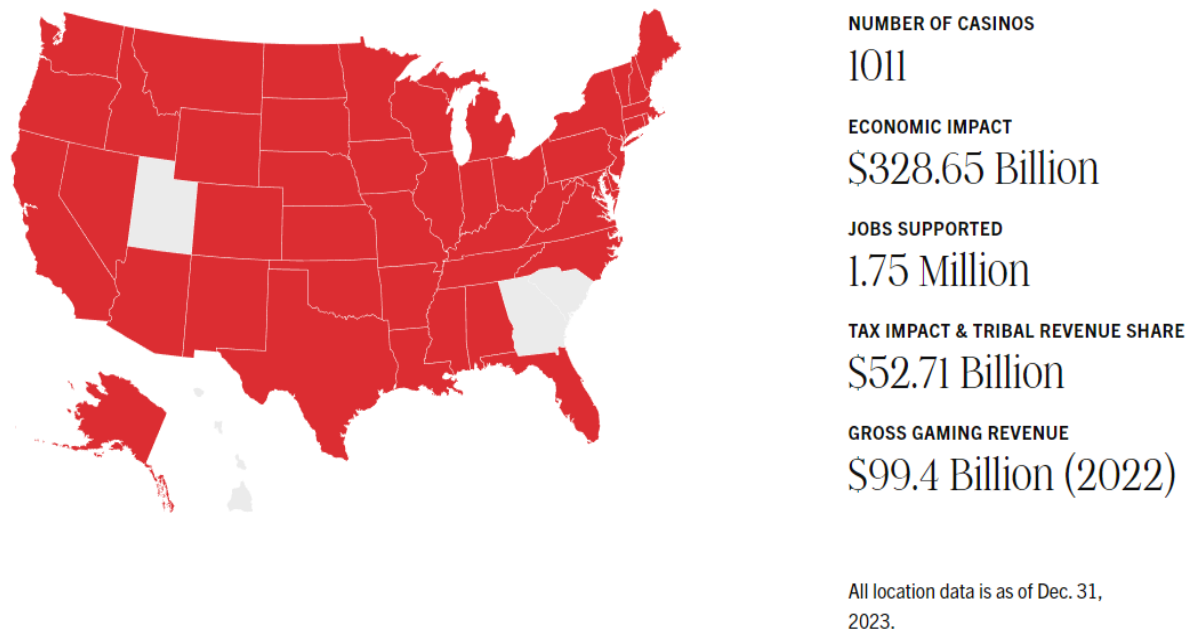


Figure 1: *2023 State of Play*. Adapted from the American Gaming Association, 2023.

As a result of this shift, legal frameworks needed updates to tackle challenges like regulating online betting and enforcing age restrictions (King, Delfabbro, & Griffiths, 2010). Jurisdictions have made efforts to legalize and regulate online gambling, aiming to decrease risks while harnessing its economic potential. Legal changes have led to a broader acceptance of activities like sports betting, which was originally deemed illegal. Therefore, the growth in gambling prompted a careful emphasis on responsible gambling practices, indicating a sophisticated strategy to lighten its social effects. Organizations are now proactively working to prevent gambling-related harm in this dynamic environment (Creative Commons, 2021).

Psychological Impacts of Gambling

Exploring the psychological impacts of gambling reveals connections between gambling behaviors, mental health issues, and the attraction of digital gambling platforms. Drummond et al. (2020) conducted a study that examined the correlation between problematic gambling behaviors and the monetary impact of loot boxes in video games. Their findings suggest that loot boxes bear a psychological resemblance to traditional gambling formats, posing significant financial risks, particularly to users exhibiting gambling symptoms. This highlights the need for game companies to adopt strategies that minimize harm and aim to reduce financial distress among vulnerable players.

Another study by Meyer and Hayer (2011) emphasizes the complexity of identifying risk and protective factors in adolescent gambling. Even with progress in recognizing these factors, their specific roles, and interactions in leading to gambling-related problems remain ambiguous. The study stresses the need for a "comprehensive, multicausal etiological model" to enhance theories, prevention efforts, and treatment approaches. The existence of varying results across different studies highlights the critical need to blend empirical research with practical implementation to address adolescent gambling issues effectively.

Furthermore, Rennert et al. (2014) advanced the field by integrating 'Gambling Disorder' into the DSM-5, offering a clinical view on its occurrence and distinct traits among individuals with substance use disorders. This step is crucial as it positions gambling as a recognized behavioral addiction with clear diagnostic criteria, similar to those for substance-related disorders. The findings from this study enhance the understanding of the psychological aspects of gambling addiction, reinforcing the importance of specific interventions and support mechanisms to combat this disorder. Considering the significant psychological impact of

gambling, it is essential to explore the evolution of regulatory frameworks aimed at minimizing these effects, emphasizing the need for an in-depth look at ethical design practices.

Regulatory Frameworks and Guidelines

Many frameworks have been developed over time to analyze, regulate, and understand different attributes of gambling. The Massachusetts Gaming Commission's Responsible Gaming Framework (Massachusetts Gaming Commission, 2018) is a phenomenal example. The article embodies a comprehensive approach to gambling regulation within the state. It emphasizes the need to promote responsible gambling, aiming to lessen harm and leverage benefits for the Commonwealth and its residents. By adopting a comprehensive approach, this framework focuses on corporate social responsibility, supporting positive gaming behaviors, and prioritizing public health and safety. It also highlights the need for responsible marketing, managing high-risk financial transactions, engaging with the community, and a dedication to continuous improvement and transparent reporting.

Guided by principles of ethical and responsible behavior, the Framework insists on informed decision-making. It mandates the establishment of things like GameSense Info Centers and the PlayMyWay budgeting tool, forming methods to prevent underage gambling and ensure that the physical environment promotes public health and safety. By integrating evaluation and research, the Framework adapts its strategies to respond to the nature of gambling and its societal impacts.

The Massachusetts Gaming Commission's Responsible Gaming Framework highlights the critical nature of gambling issues within the state, indicating that a study found a 2% problem gambling prevalence among Massachusetts' adult population, with an additional 8% considered

at-risk, equating to approximately 109,483 adult residents identified as problem gamblers and 459,827 as at-risk gamblers. Furthermore, the Framework explores the dynamics of gambling behavior, revealing that 2% of study participants transitioned to problem gambling status over the course of the study. This underlines the urgent need for tailored regulatory measures and responsible gaming initiatives (Massachusetts Gaming Commission, 2018).

The Framework stresses community engagement as a key aspect of corporate social responsibility. It advocates for the development of collaborations and partnerships to address problem gambling and promote health. Gaming licenses are encouraged to develop practices that involve associated individuals and organizations in innovation, education, problem-solving, and relationship enhancement. This strategic approach highlights the Framework's intent to balance public health safeguards with the facilitation of responsible gaming practices.

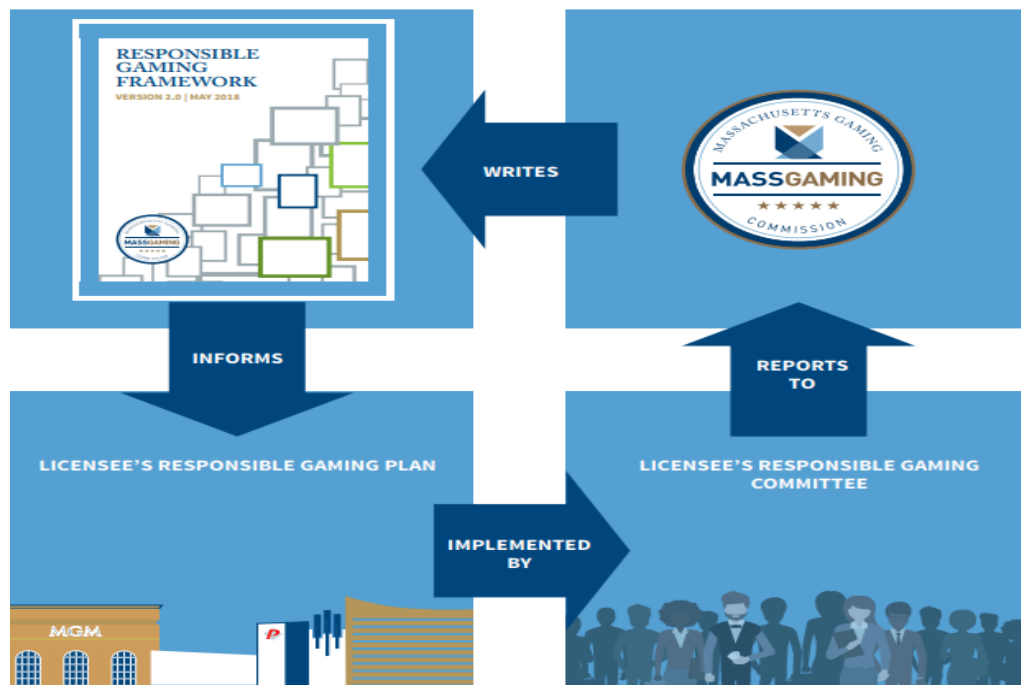


Figure 2: *Responsible Gaming Plan*. Adapted from the Massachusetts Gaming Commission, 2018.

However, critical analysis reveals shortcomings in the Framework's consideration of engineering and design's impact on fostering gambling addiction. To boost its effectiveness, the

Framework should include directives aimed at the ethical creation of gambling software. This would tackle issues stemming from how design and engineering decisions may heighten addiction risks. Proposing new guidelines focused on ethical design would solidify the Framework's strategy in addressing the multifaceted problems related to gambling, aiming for a strategy that balances public health and responsible gaming.

Engineering and Design Practices in Gambling Technologies

While considerable research covers the historical evolution, psychological impact, and regulatory frameworks of gambling, a significant gap remains in examining the engineering and design aspects of gambling technologies. This gap is significant and should not be overlooked, as intentional decisions in design and development significantly influence user engagement and potential addiction. The strategic use of design features that exploit psychological vulnerabilities—like bright colors, rapid action, and satisfying sounds—targets the brain's reward system, encouraging continuous play and leading to addiction.

Studies have highlighted how digital media and gambling converge to enhance the appeal to younger demographics, who are particularly susceptible to these design tactics (King, Delfabbro, and Griffiths, 2010). These designs often mimic the variable ratio reinforcement schedules found in traditional gambling, where rewards are distributed unpredictably to reinforce behavior. These mechanisms not only render media to be addictive and highly profitable but also highlight their resemblance to gambling and the potential risk they pose for financial and psychological harm. The industry's push towards maximizing profit often overshadows the potential harm these technologies can cause, raising ethical questions about the responsibility of designers and engineers who create these addictive systems. The current regulatory frameworks

rarely address the intricacies of game design that contribute to gambling addiction, highlighting a need for guidelines that specifically target ethical design practices. As gambling technologies evolve to incorporate more complex psychological triggers, addressing ethical concerns becomes increasingly critical. Developing new frameworks that incorporate ethical designs calls for a collaborative effort from psychology, technology, and ethics fields. These guidelines aim to protect users from harm, fill the current research gap, and ensure gambling technology's development considers its effects on human behavior and well-being.

Acknowledging the urgency, the following methodology section will outline a comprehensive framework to explore the deliberate tactics used by designers and engineers that captivate users, often compromising their well-being. This focus on the ethical challenges within gambling technology design enters a relatively untouched field. My goal in this exploration is to fill a critical gap in the research and lead efforts toward a safer gambling ecosystem. Through examining these overlooked areas, I expect to uncover critical insights into how technology design affects user behavior. This will pave the way for groundbreaking strategies that put human welfare first, moving away from exploiting technology for profit. The ultimate goal of this research is to promote a gambling landscape where the safety and well-being of users are more important than financial gain.

Methodology

Research Approach

This study adopts a comprehensive literature review methodology to examine the ethical considerations and design practices within the gambling technology sector. It focused on analyzing existing research, regulatory documents, and case studies that shed light on how

design choices can lead to addictive behaviors. The main data source will consist of an organized collection of academic papers, industry analyses, and legal documents that focus on gambling technologies, especially regarding ethical design and engineering. Additionally, information from regulatory agencies, scholarly articles on psychology and technology ethics, and works concerning consumer protection in digital settings will be gathered. The study uses a thematic analysis to identify themes in design strategies, ethics, and regulations, focusing on aspects linked to user addiction and exploitation.

Objectives

- To map out the landscape of design practices in gambling technologies that pose ethical concerns.
- To critically assess the adequacy of existing regulatory measures in addressing these concerns.
- To develop and propose the Ethical Design and Engineering Framework for Gambling Technologies (EDEFGT), prioritizing ethical design principles to mitigate addiction risks and enhance user well-being.

The research aims to illuminate the relationship between technology design and ethical considerations in the context of gambling. It will highlight gaps in current regulatory practices and suggest concrete steps toward better ethical design. The overarching aim is to enhance the field of responsible technology development, pushing for modifications that safeguard users against the possible dangers tied to gambling technologies.

Discussion

To address the lack of ethical considerations in the development of gambling technologies, I have created the Ethical Design and Engineering Framework for Gambling Technologies (EDEFGT). This set of comprehensive guidelines is designed to tackle ethical challenges and close gaps in current practices within the gambling technology sector. The development of the EDEFGT drew on an extensive review of current ethical, regulatory, and design frameworks, as well as the unique challenges associated with digital gambling platforms. Drawing inspiration from the Massachusetts Gaming Commission's Responsible Gaming Framework and insights from studies on gambling addiction, the EDEFGT aims to provide a comprehensive approach to the complexities of gambling technology, ensuring ethical integrity.

Foundation of the Framework

The Ethical Design and Engineering Framework for Gambling Technologies emerged from a multidisciplinary process that integrated ethics, psychology, technology, and regulatory studies. This approach provided a deep understanding of the nature of gambling technologies and their societal impacts. A key aspect of the EDEFGT's development involved pinpointing key ethical concerns that were repetitive in digital gambling, including issues of user autonomy, harm minimization, and the psychological tactics used in game design. Through this analysis, the EDEFGT was structured to directly confront and address these fundamental ethical issues.

Integration into Current Practices

Designed for smooth integration with the gambling industry's current engineering and design practices, the EDEFGT introduces actionable guidelines that not only align with existing

workflows, but also emphasize a significant shift towards ethical considerations. It promotes a user-centric design approach, like the plan shown in Figure 3, that prioritizes transparency, fairness, and user well-being over capital.

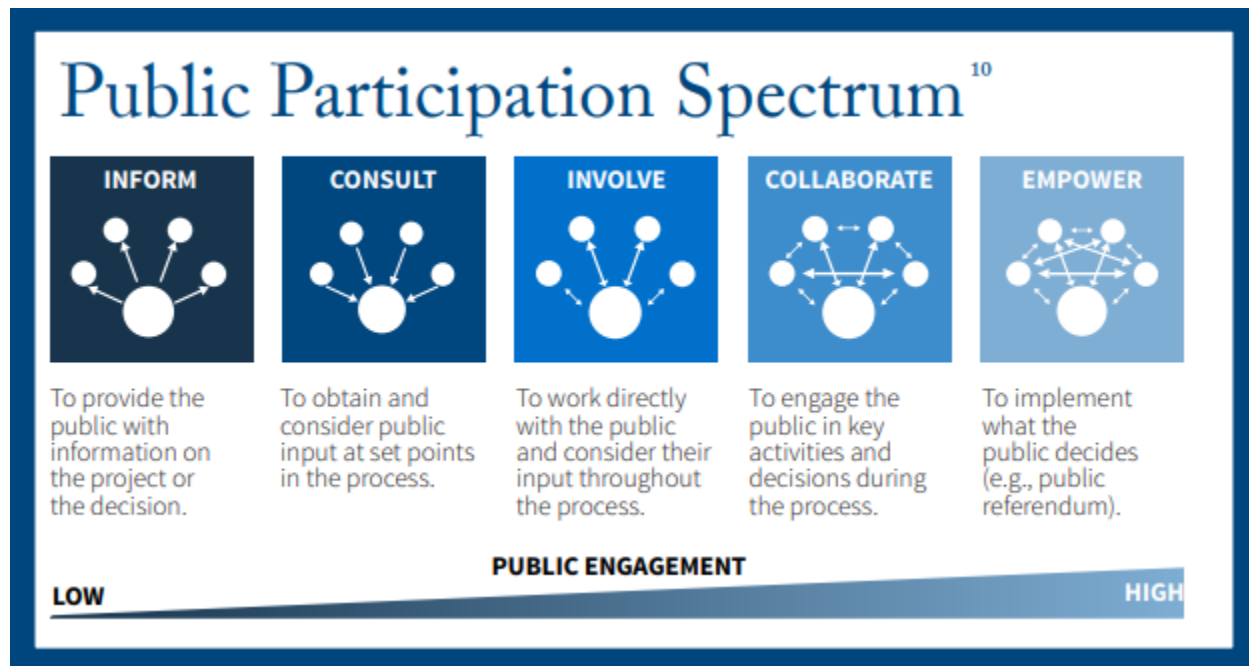


Figure 3: *Public Awareness Plan*. Adapted from the Massachusetts Gaming Commission, 2018.

The framework details measures for embedding ethical assessments at every stage of the product development process, guaranteeing that gambling technologies undergo comprehensive ethical review prior to their release.

Inspiration from Existing Examples

In the development of the EDEFGT, I looked to several foundational frameworks for inspiration and practical guidance. Among these were the IEEE's Ethically Aligned Design document (Institute of Electrical and Electronics Engineers, 2019) and the International Association of Gaming Regulators' Consumer Protection Framework for Online Gambling (Heirene & Gainsbury, 2020). These frameworks offered deep insights into the application of

ethical principles within the realms of technology, presenting a way to navigate complex ethical considerations. By drawing on these insights, the EDEFGT was carefully crafted to convert broad ethical principles into actionable, specific guidelines. These guidelines are designed to address the specific needs and challenges of the gambling technology industry, ensuring they are directly relevant and practically applicable. Considering this information, I present the new, original framework:

Ethical Design and Engineering Framework for Gambling Technologies (EDEFGT)

1. Principles of Ethical Engineering in Gambling Technologies

- **Transparency:** Clearly disclose the mechanics, odds, and costs associated with gambling products. Information should be accessible and understandable to all users.
- **Fairness:** Ensure that gambling games are fair and consistent, with outcomes based on chance and not manipulated to disadvantage users.
- **Harm Minimization:** Design games and platforms that actively prevent or reduce the risk of gambling harm. This includes mechanisms to detect and intervene in cases of excessive gambling behavior.
- **User Autonomy:** Empower users with tools to control their gambling activities, such as self-imposed limits on spending and time, as well as easy access to self-exclusion options.
- **Privacy and Data Protection:** Safeguard users' personal and financial information with state-of-the-art security measures. Collect and use data responsibly, for enhanced user safety and experience, with the requirement of user consent.

2. Operational Guidelines for Implementing Ethical Design

- Risk Assessment: Conduct regular risk assessments to identify potential harm associated with gambling products and implement necessary design changes or interventions.
- User-Centric Design: Engage with users and consider their feedback in the design process to ensure that gambling technologies cater to their needs and promote a positive and safe experience.
- Collaborative Efforts: Foster collaboration among industry stakeholders, including developers, regulators, mental health experts, and user advocacy groups, to share best practices and promote ethical standards across the industry.
- Education and Awareness: Provide educational materials and resources about the risks of gambling and strategies for responsible play. This includes training for customer service representatives to recognize and respond to signs of gambling harm.
- Innovation for Good: Encourage the development of new innovative technologies and features that enhance user well-being, such as AI-driven tools for detecting at-risk behaviors and providing timely interventions.

3. Regulatory and Compliance Framework

- Regulatory Engagement: Work closely with regulatory bodies to ensure that gambling products comply with local and international laws and standards related to ethical design and user protection.
- Certification and Auditing: Obtain certification(s) from recognized bodies that assess compliance with ethical design principles. Regular audits should be conducted to ensure ongoing adherence to these standards.

- **Research and Development:** Invest in research to better understand the impact of gambling technologies on users, and to develop innovative solutions that reduce harm and improve the healthy gambling experience.
- **Public Reporting:** Publish annual reports detailing efforts and achievements in promoting ethical design and engineering practices, including challenges faced and how they were addressed.

4. Continuous Improvement and Adaptation

- **Feedback Loops:** Establish mechanisms for receiving and integrating user feedback into the continuous improvement of gambling products.
- **Adaptive Design:** Stay informed about emerging research and trends in gambling behavior and technology to adapt design practices and interventions accordingly.
- **Stakeholder Engagement:** Maintain an open dialogue with stakeholders to refine ethical design practices and respond to societal concerns about gambling technologies.

Addressing Implementation Challenges

The practical application of the EDEFGT poses certain challenges, including resistance from industry stakeholders, the complexity of implementing systemic changes, and the need for widespread education on ethical design principles. The framework highlights the importance of cooperation between stakeholders ranging from developers to regulators in discussions about ethical practices. It suggests regular training and educational initiatives to cultivate an industry-wide culture that appreciates ethical design. Additionally, the framework introduces accountability measures, such as certification programs and public disclosures, to promote transparency and adherence.

Future Directions and Integration

Looking forward, the EDEFGT is positioned as a living document that will evolve in response to technological advancements and emerging ethical concerns. Its flexibility allows for updates and revisions based on empirical research and stakeholder feedback. Additionally, the framework advocates for the integration of ethical design principles into educational curricula for engineers and designers. This ensures that the next generation of professionals is equipped to navigate the ethical challenges of gambling technology development.

By proposing the Ethical Design and Engineering Framework for Gambling Technologies, this research adds a vital perspective to the discussion on gambling's ethical implications. The EDEFGT illustrates that it is possible to integrate ethical responsibility with technological innovation, with the goal of creating a gambling technology industry that values and safeguards users. Broad implementation of this framework represents a critical step towards a more ethical and responsible gambling landscape, ensuring technological progress benefits society.

Conclusion

In this research paper, I embarked on a comprehensive exploration of the world of gambling, charting its evolution from ancient traditions to today's advanced digital platforms. My thorough review of the literature illuminated the transformative impact of technological advancements on the gambling landscape, which brought critical ethical concerns in the design and engineering of gambling technologies. I conducted an investigation that primarily focused on examining the deliberate design choices of these platforms and how they shape user behavior, revealing the ethical dilemmas that arise from such practices.

The shift to digital gambling platforms has blurred the distinction between gaming and gambling, leading to considerable psychological and financial consequences. This is supported by research that connects gambling behaviors with mental health concerns and points out the risks associated with addictive features like loot boxes. A closer look at regulatory frameworks, particularly the Massachusetts Gaming Commission's Responsible Gaming Framework, shows attempts to lessen gambling-related harms. However, it also brings to light substantial gaps in tackling the ethical issues related to how gambling technologies are designed and engineered.

Responding to these gaps, I developed the Ethical Design and Engineering Framework for Gambling Technologies (EDEFGT). This framework is a major advancement in redefining the development and operation of gambling technologies with an ethical perspective. Grounded in principles of fairness, transparency, user autonomy, harm minimization, and privacy protection, the EDEFGT provides a blueprint for producing gambling products that safeguard users, promoting a balance between technological innovation and ethical accountability. The implementation of the EDEFGT shows it exceeds theoretical concepts, acting as a practical roadmap for enacting meaningful change. Steering the creation and management of gambling technologies towards ethical principles will significantly improve user well-being.

In conclusion, the ethical approach to designing and developing gambling technologies is essential in today's digital world. This research highlights the critical need for an ethical framework in the creation of gambling technologies, showcasing my contribution through the Ethical Design and Engineering Framework for Gambling Technologies (EDEFGT). This framework demonstrates the potential to merge technological innovation with ethical principles. Adoption by the industry would mark a transition towards a more responsible and sustainable gambling environment, prioritizing user safety and well-being over profit. This dedication to

ethical practices sets a course for a future where gambling technologies are crafted with conscientiousness and integrity, guaranteeing a safer and more equitable digital gambling environment for all.

References

- King, D., Delfabbro, P., & Griffiths, M. (2010). The convergence of gambling and digital media: Implications for gambling in young people. *Journal of Gambling Studies*, 26(2), 175-187. <https://link-springer-com.proxy1.library.virginia.edu/article/10.1007/s10899-009-9153-9>
- Drummond, A., Sauer, J. D., Ferguson, C. J., & Hall, L. C. (2020). The relationship between problem gambling, excessive gaming, psychological distress and spending on loot boxes in Aotearoa New Zealand, Australia, and the United States—A cross-national survey. *PloS one*, 15(3), e0230378.
- Heirene, Robert, and Sally Gainsbury. “How Can We Improve Consumer Protection in Online Gambling? - IAGR - International Association of Gaming Regulators.” IAGR, 28 May 2020, iagr.org/industry-news/how-can-we-improve-consumer-protection-in-online-gambling/.
- “Ethically Aligned Design.” A Vision for Prioritizing Human Well-Being with Autonomous and Intelligent Systems, IEEE - Institute of Electrical and Electronics Engineers, 2019, standards.ieee.org/wp-content/uploads/import/documents/other/ead_v2.pdf. Accessed 27 Mar. 2024.
- Staff, P. (2022, August 4). College students & gambling. Problem Gambling Resource Centers (PGRC). <https://nyproblemgamblinghelp.org/blog/college-students-gambling/>
- Creative Commons. (2021). Corporate Social Responsibility and Sustainability. A Bibliometric Analysis of Their Interrelations. <https://www.proquest.com/docview/2487094353>

Meyer, G., & Hayer, T. (2011). Problem gaming and gambling: Bridging the gap and looking to the future. In the Handbook of Implicit Cognition and Addiction.

“State of Play 2024.” American Gaming Association, 25 Jan. 2024, www.americangaming.org/state-of-play-2023/

Chóliz, Mariano. “Ethical Gambling: A Necessary New Point of View of Gambling in Public Health Policies.” *Frontiers in Public Health*, vol. 6, no. 12, 31 Jan. 2018.
<https://www.ncbi.nlm.nih.gov/pmc/articles/PMC5797763/>

Rennert, Lior, et al. “DSM-5 Gambling Disorder: Prevalence and Characteristics in a Substance Use Disorder Sample.” *Experimental and Clinical Psychopharmacology*, vol. 22, no. 1, Feb. 2014, pp. 50–56, <https://doi.org/10.1037/a0034518>.

University, Santa Clara. “An Ethical Toolkit for Engineering/Design Practice.” *Www.scu.edu*, 2018, www.scu.edu/ethics-in-technology-practice/ethical-toolkit/.

Sohn, Emily. “How Gambling Affects the Brain and Who Is Most Vulnerable to Addiction.” *Apa.org*, 1 July 2023, www.apa.org/monitor/2023/07/how-gambling-affects-the-brain.

INSERM Collective Expertise Centre. *Gambling: Contexts and Addictions*. PubMed, Paris (FR), Institut national de la santé et de la recherche médicale, 2008,
www.ncbi.nlm.nih.gov/books/NBK10784/. Accessed 18 Mar. 2024.

“Gambling - Chances, Probabilities, and Odds.” *Encyclopedia Britannica*,
www.britannica.com/topic/gambling/Chances-probabilities-and-odds.

Massachusetts Gaming Commission. “Responsible Gaming Framework.” MCG, May 2018,
massgaming.com/wp-content/uploads/MGC-Responsible-Gaming-Framework-2.0.pdf.