

Supplementary Figure 3 (S3): Allegheny Hospital Telehealth Data

Heart Attacks at Allegheny Hospital with Telehealth at Different Capacities

	24	40	56	72	88	104	120	136	152
Low Patient Arrival	0 ± 0	0 ± 0	0 ± 0	0 ± 0	0 ± 0	0 ± 0	0 ± 0	0 ± 0	0 ± 0
Middle Patient Arrival	0 ± 0	0 ± 0	0.25 ± 0.5	0 ± 0	0 ± 0	0.25 ± 0.5	0 ± 0	0 ± 0	0 ± 0
High Patient Arrival	30 ± 7.12	23.25 ± 2.87	28.75 ± 6.34	24.75 ± 6.85	33.75 ± 4.42	21.75 ± 3.4	35 ± 6.38	22.25 ± 9.71	26 ± 2.71

Figure A: Table of heart attack data for Allegheny Hospital with telehealth at different capacities for different patient arrival rates.

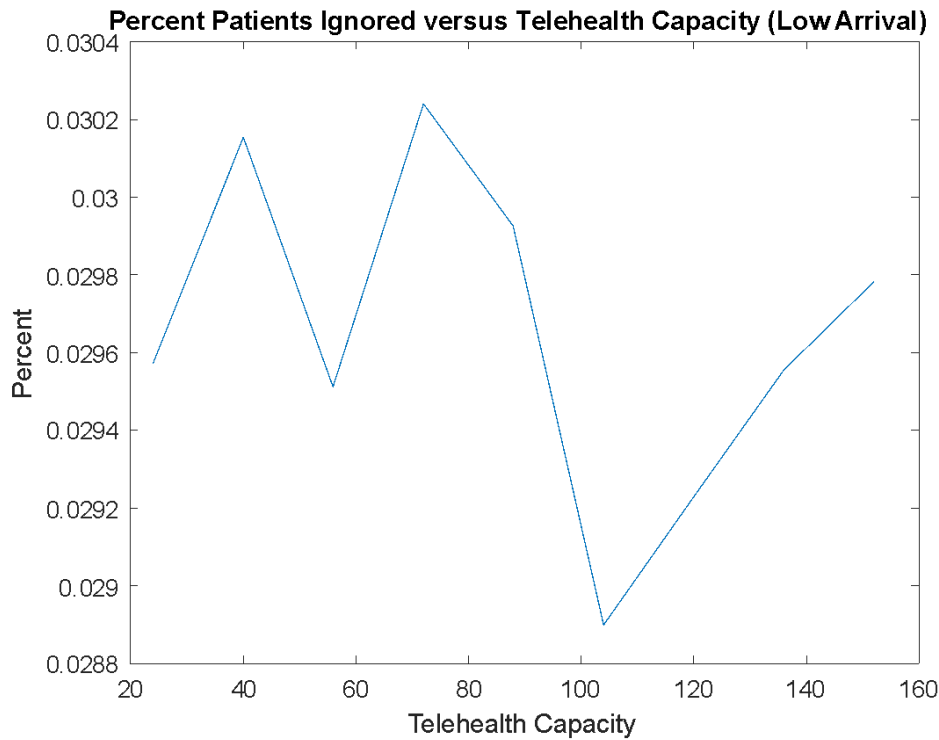


Figure B: Graph of percent of patients ignored vs. telehealth capacity for Allegheny Hospital at a low patient arrival rate.

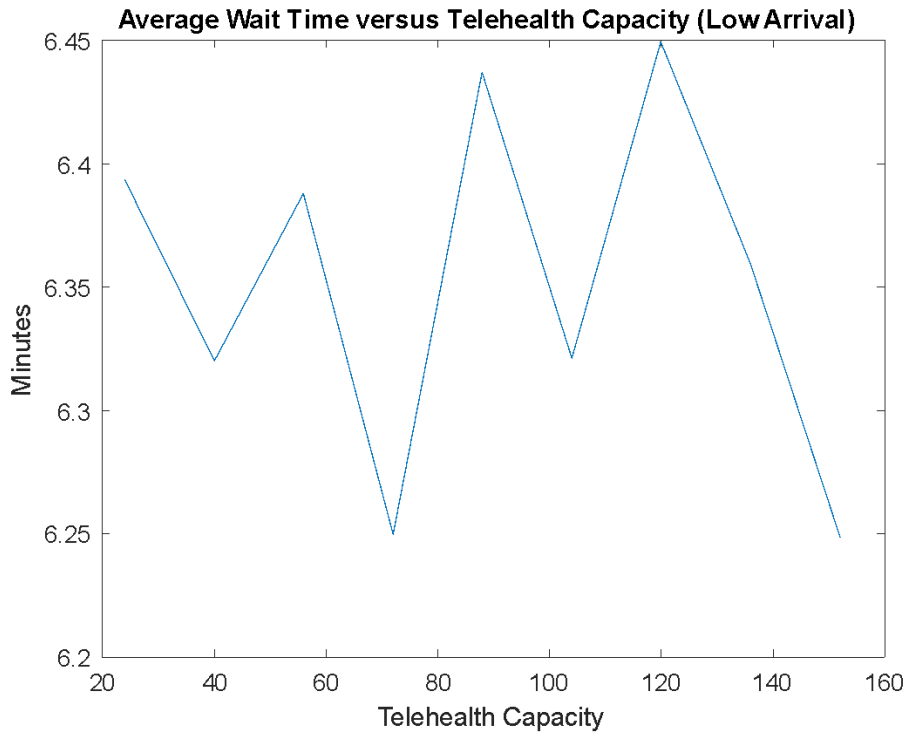


Figure C: Graph of average wait time (minutes) vs. telehealth capacity for Allegheny Hospital at a low patient arrival rate.

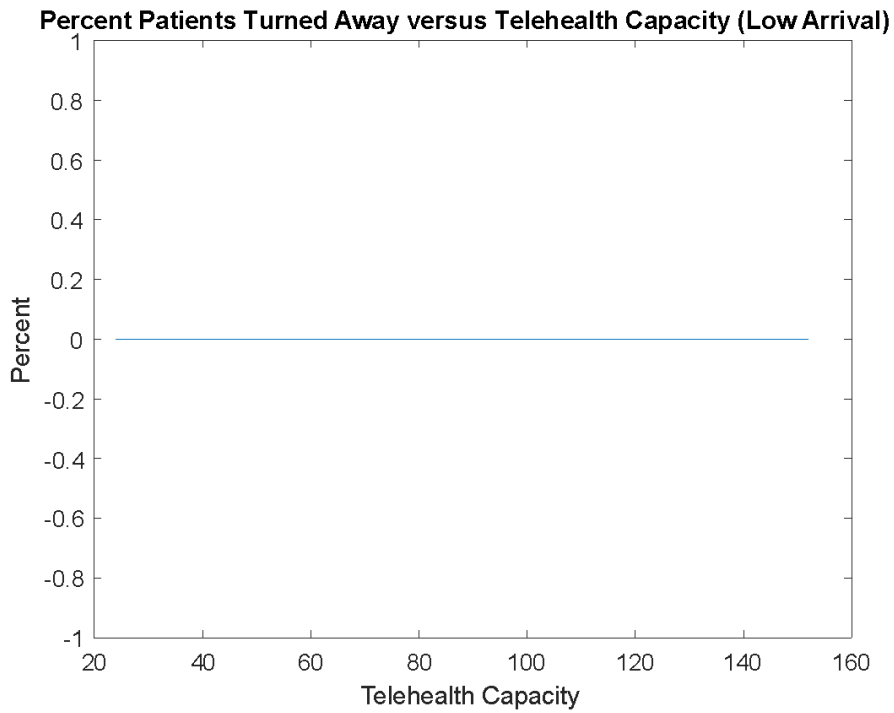


Figure D: Graph of percent of patients turned away vs. telehealth capacity for Allegheny Hospital at a low patient arrival rate.

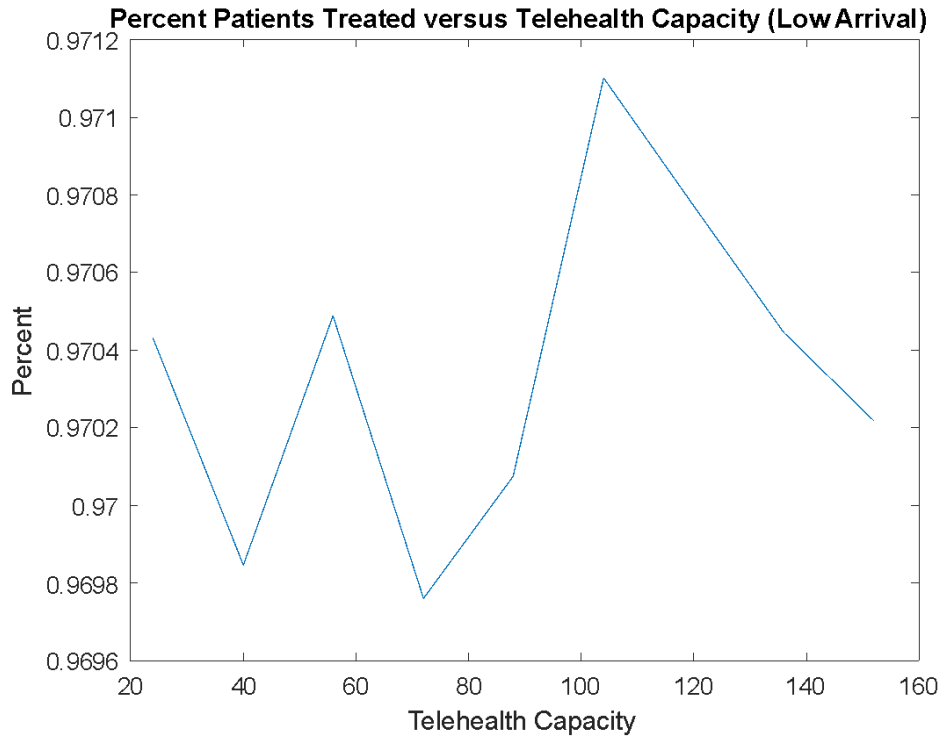


Figure E: Graph of percent of patients treated vs. telehealth capacity for Allegheny Hospital at a low patient arrival rate.

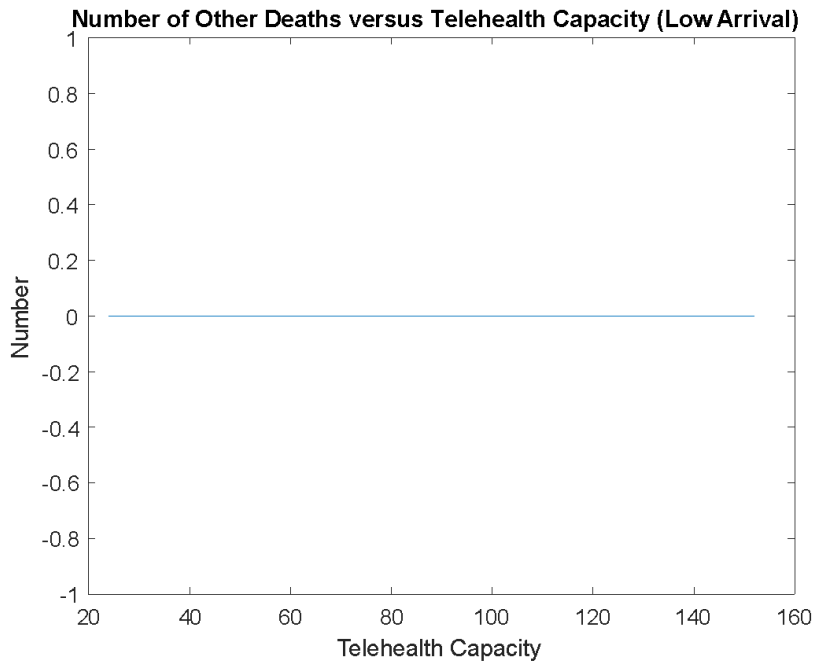


Figure F: Graph of number of other deaths vs. telehealth capacity for Allegheny Hospital at a low patient arrival rate.

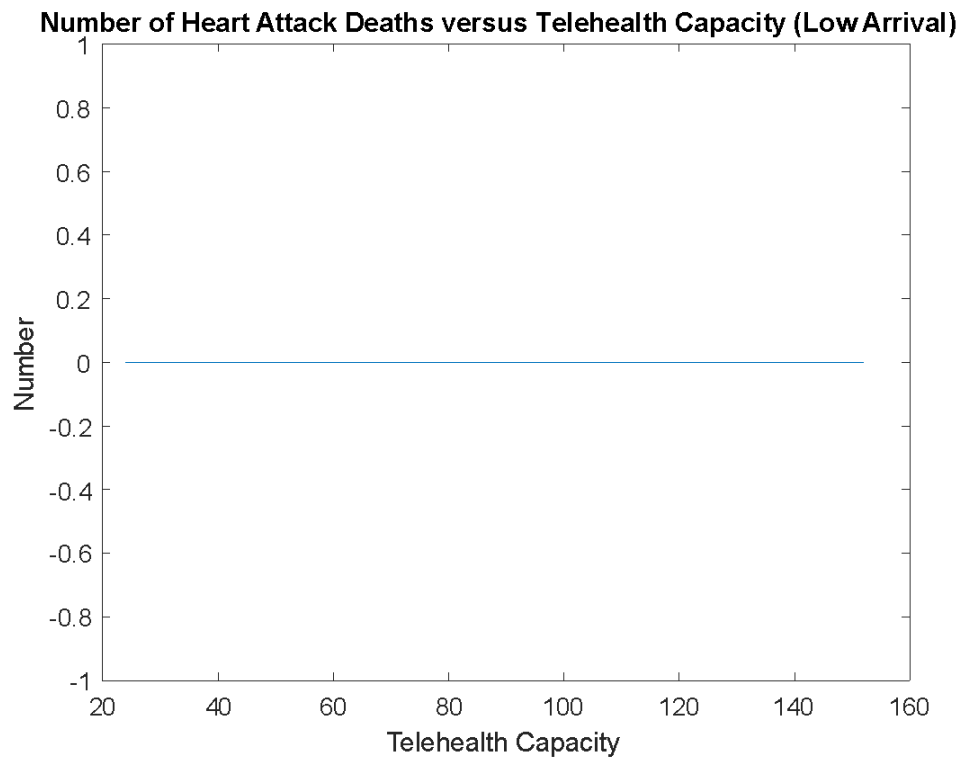


Figure G: Graph of number of heart attack deaths vs. telehealth capacity for Allegheny Hospital at a low patient arrival rate.

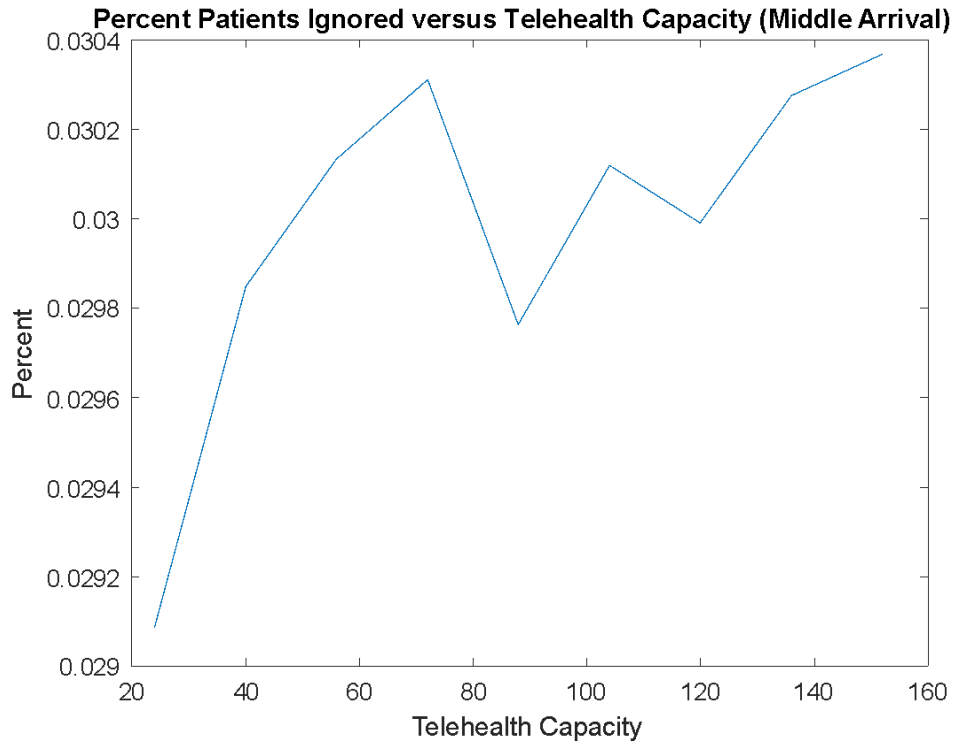


Figure H: Graph of percent of patients ignored vs. telehealth capacity for Allegheny Hospital at a middle patient arrival rate.

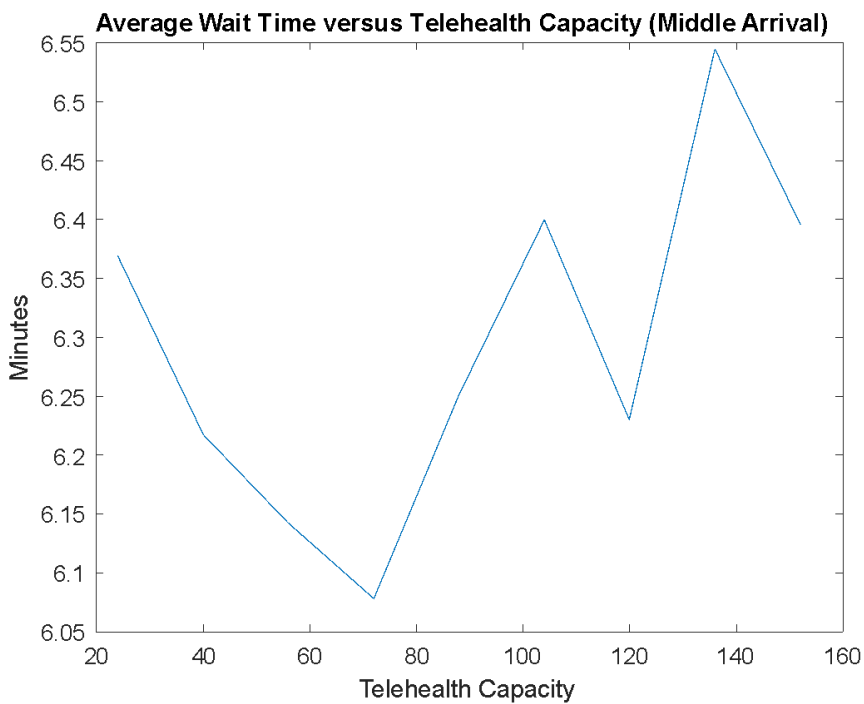


Figure I: Graph of average wait time (minutes) vs. telehealth capacity for Allegheny Hospital at middle patient arrival rate.

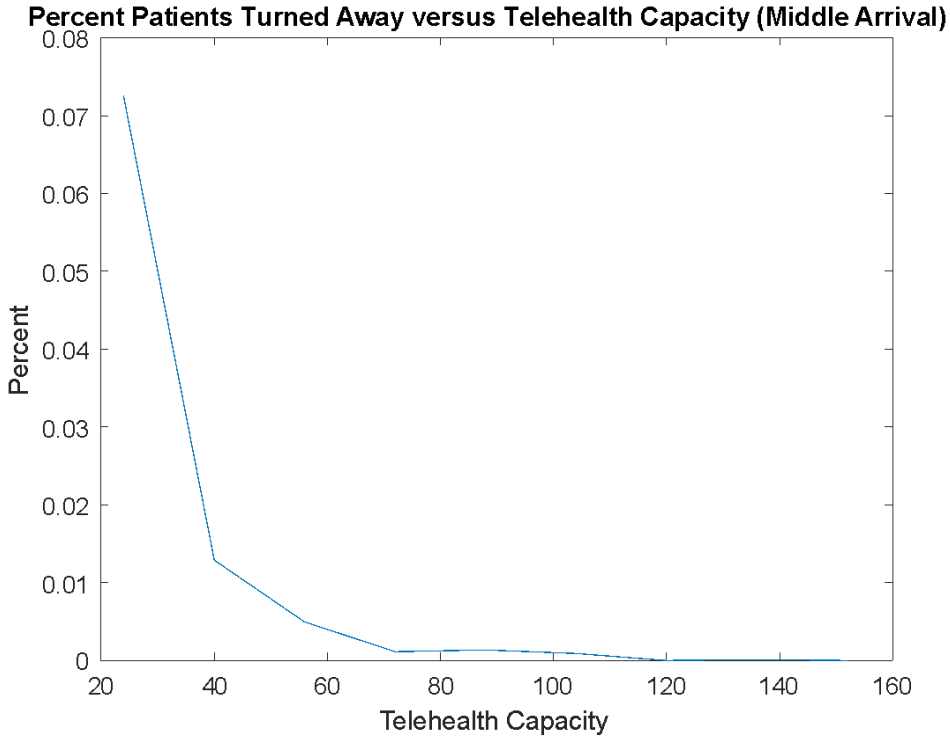


Figure J: Graph of percent of patients turned away vs. telehealth capacity for Allegheny Hospital at middle patient arrival rate.

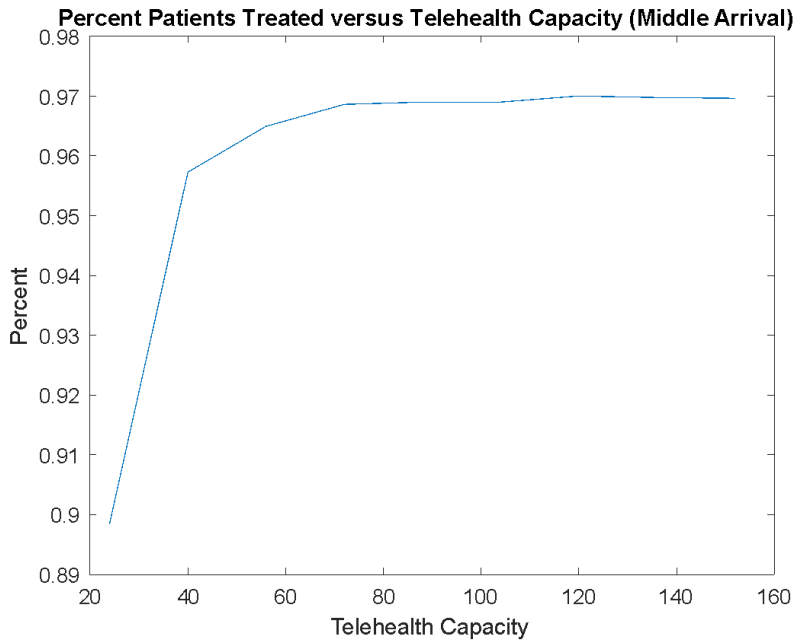


Figure K: Graph of percent of patients treated vs. telehealth capacity for Allegheny Hospital at a middle patient arrival rate.

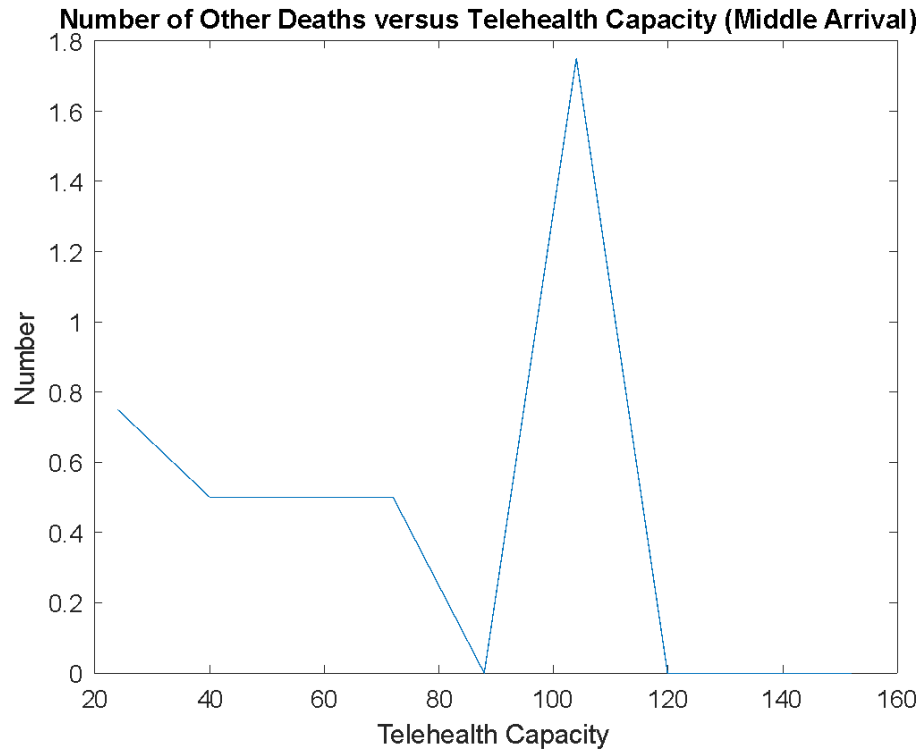


Figure L: Graph of number of other deaths vs. telehealth capacity for Allegheny Hospital at middle patient arrival rate.

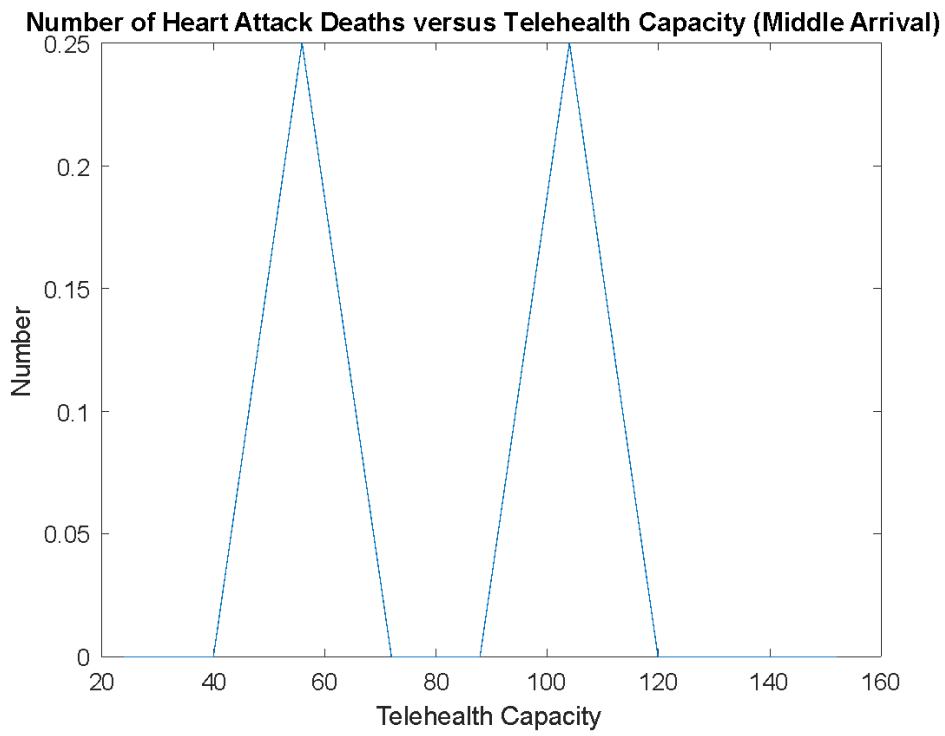


Figure M: Graph of number of heart attack deaths vs. telehealth capacity for Allegheny Hospital at middle patient arrival rate.

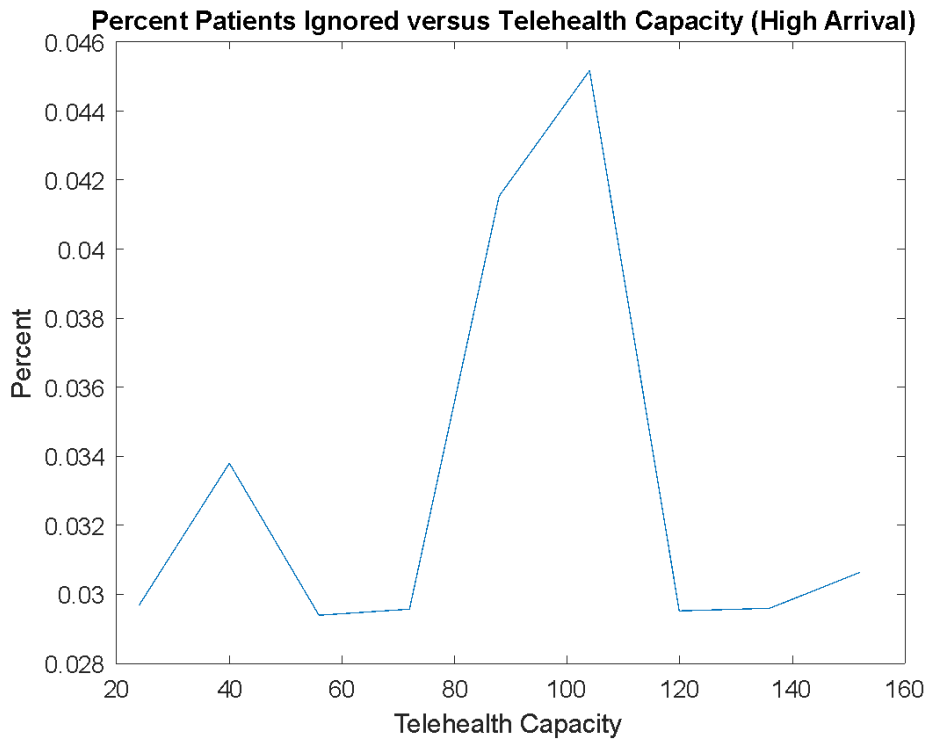


Figure N: Graph of percent of patients ignored vs. telehealth capacity for Allegheny Hospital at a high patient arrival rate.

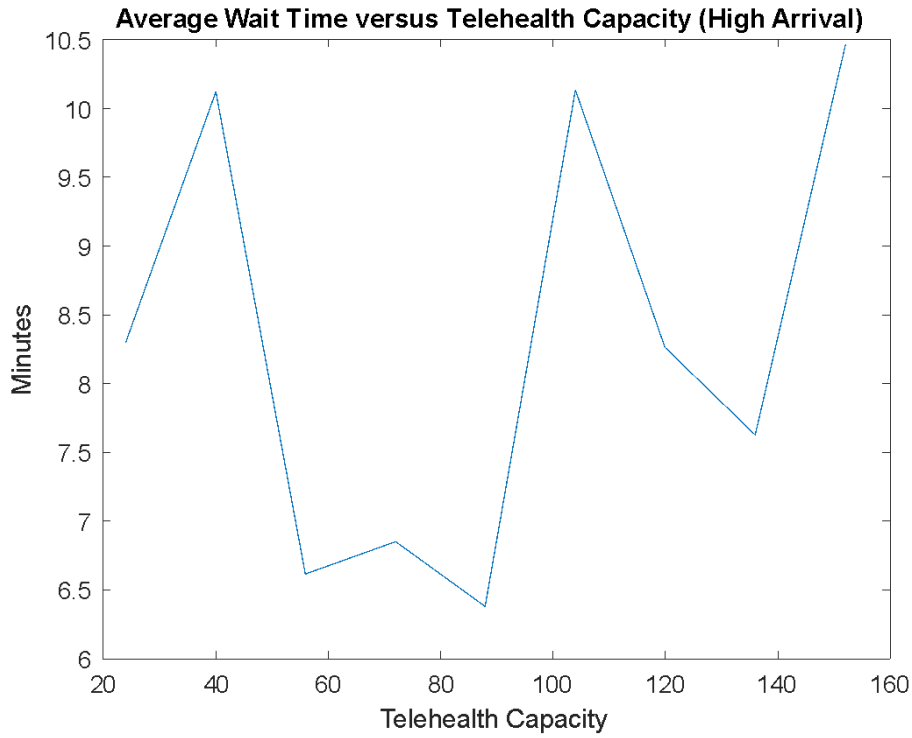


Figure O: Graph of average wait time (minutes) vs. telehealth capacity for Allegheny Hospital at high patient arrival rate.

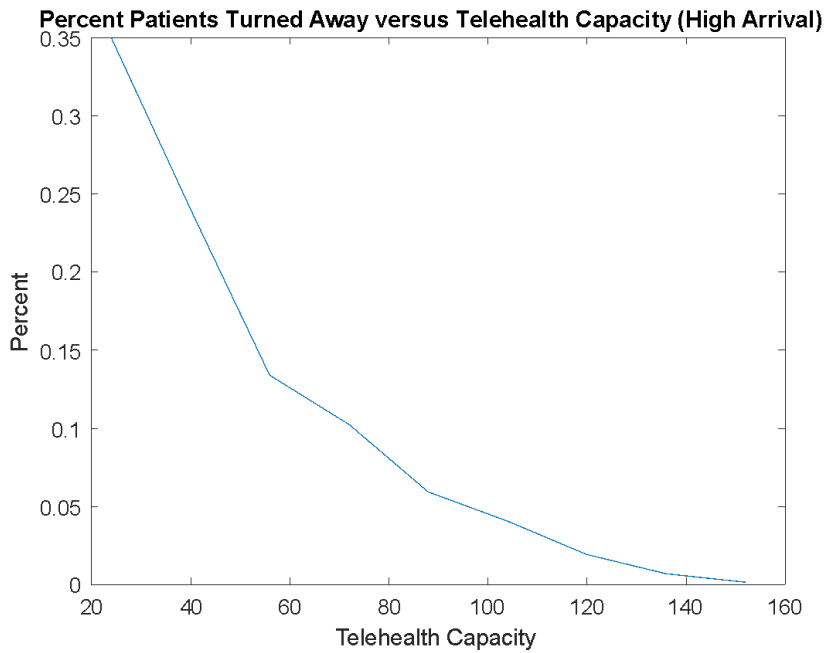


Figure P: Graph of percent of patients turned away vs. telehealth capacity for Allegheny Hospital at high patient arrival rate.

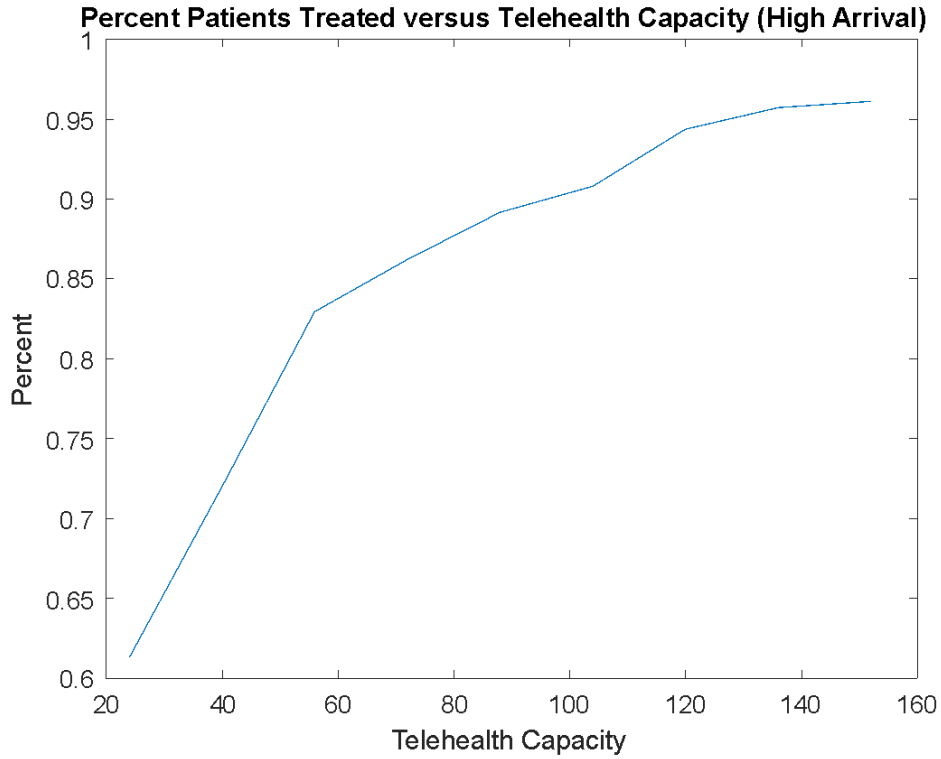


Figure Q: Graph of percent of patients treated vs. telehealth capacity for Allegheny Hospital at high patient arrival rate.

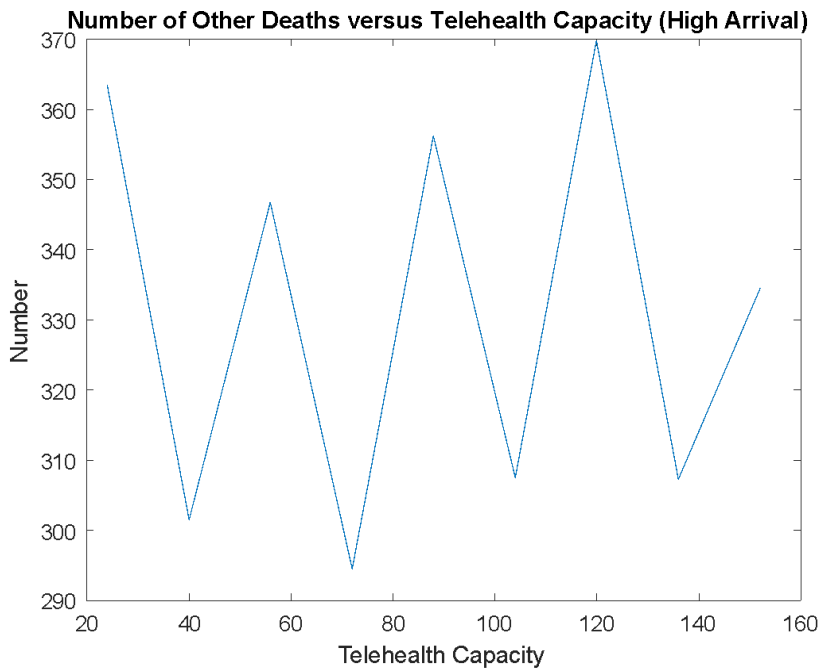


Figure R: Graph of number of other deaths vs. telehealth capacity for Allegheny Hospital at high patient arrival rate.

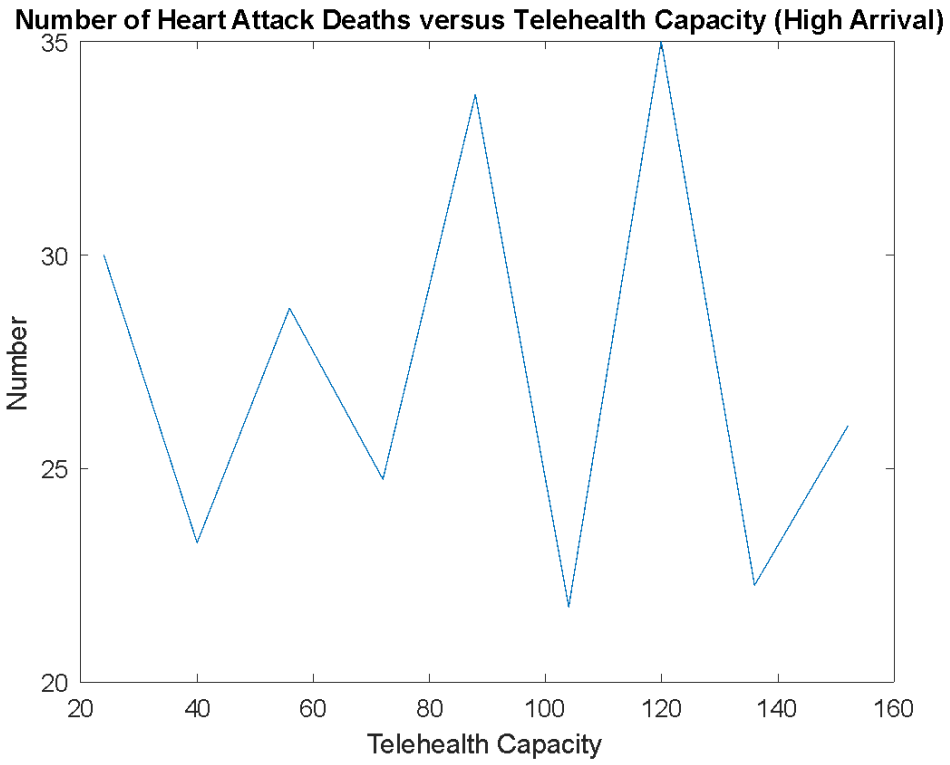


Figure S: Graph of number of heart attack deaths vs. telehealth capacity for Allegheny Hospital at high patient arrival rate.