

Supplementary Figure 1 (S1): Allegheny Hospital Clinic Data

Heart Attacks at Allegheny Hospital with Co-Located Primary Clinic at Different Capacities

	12	20	28	36	44	52	60	68	76
Low Patient Arrival	0 ± 0	0 ± 0	0 ± 0	0 ± 0	0 ± 0	0 ± 0	0 ± 0	0 ± 0	0 ± 0
Middle Patient Arrival	0 ± 0	0 ± 0	0 ± 0	0 ± 0	0 ± 0	0 ± 0	0 ± 0	0 ± 0	0 ± 0
High Patient Arrival	136 ± 37.35	92 ± 15.87	102.5 ± 10.34	63.5 ± 29.44	66.75 ± 31.90	57.75 ± 18.15	66.75 ± 20.95	81.5 ± 9.54	57.75 ± 24.02

Figure A: Allegheny Hospital heart attack frequencies with the addition of the primary clinic at varying capacities.

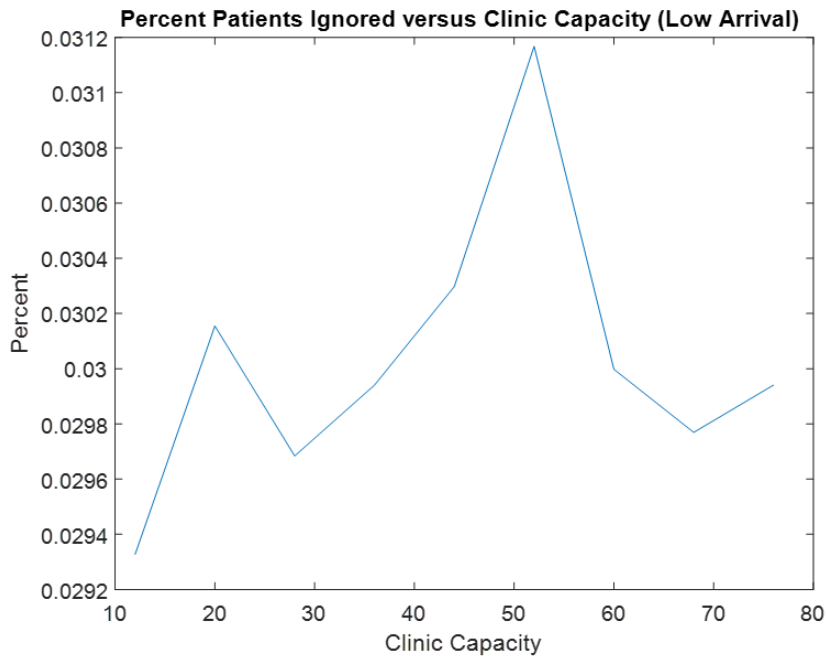


Figure B: Graph of percent patients ignored by the simulation in computations for Allegheny Hospital as a function of clinic capacity at the low patient arrival rate.

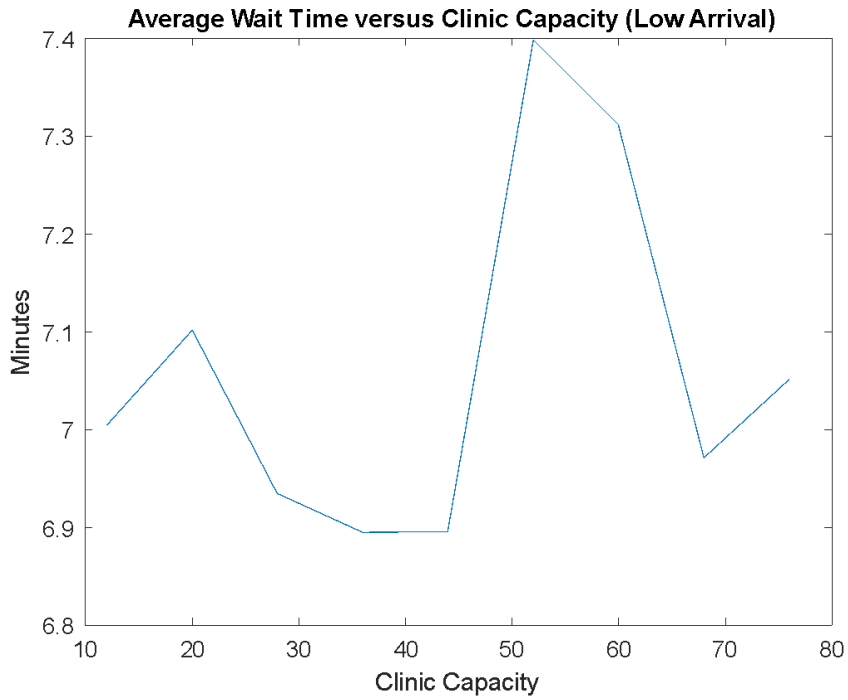


Figure C: Graph of time elapsed (minutes) vs. clinic capacity for Allegheny Hospital with the addition of the primary clinic at a low patient arrival rate.

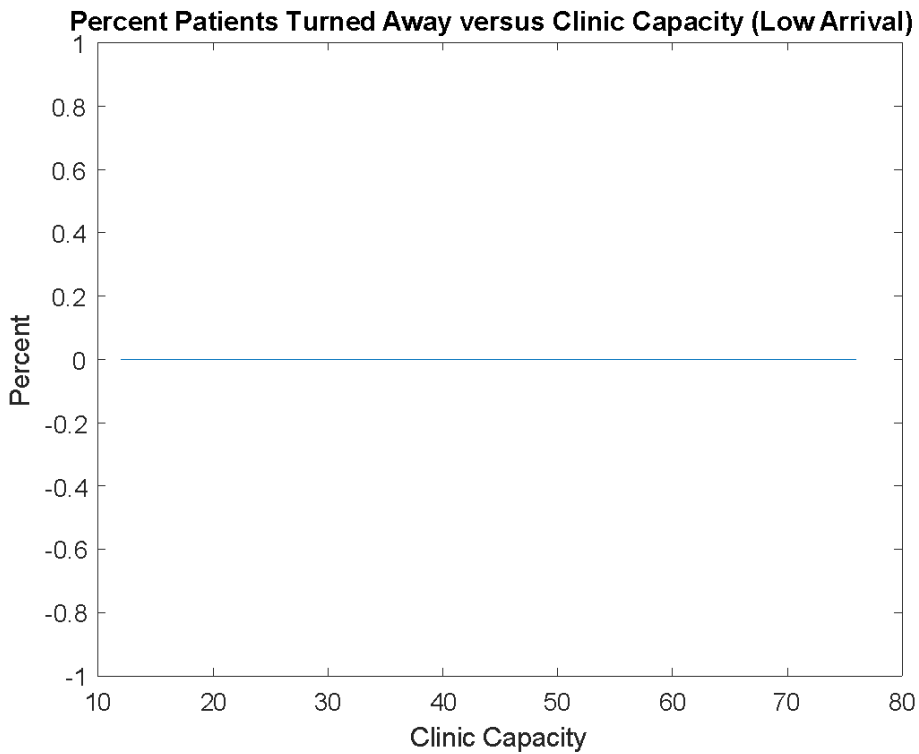


Figure D: Graph of percent of patients turned away vs. clinic capacity for Allegheny Hospital.

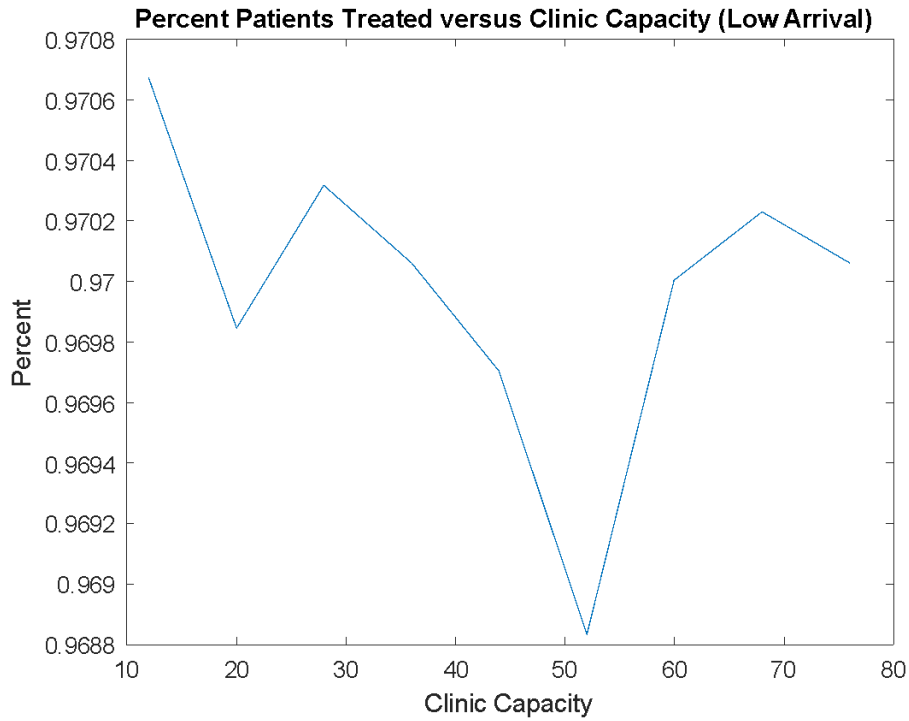


Figure E: Graph of percent of patients treated vs. clinic capacity for Allegheny Hospital at a low arrival rate.

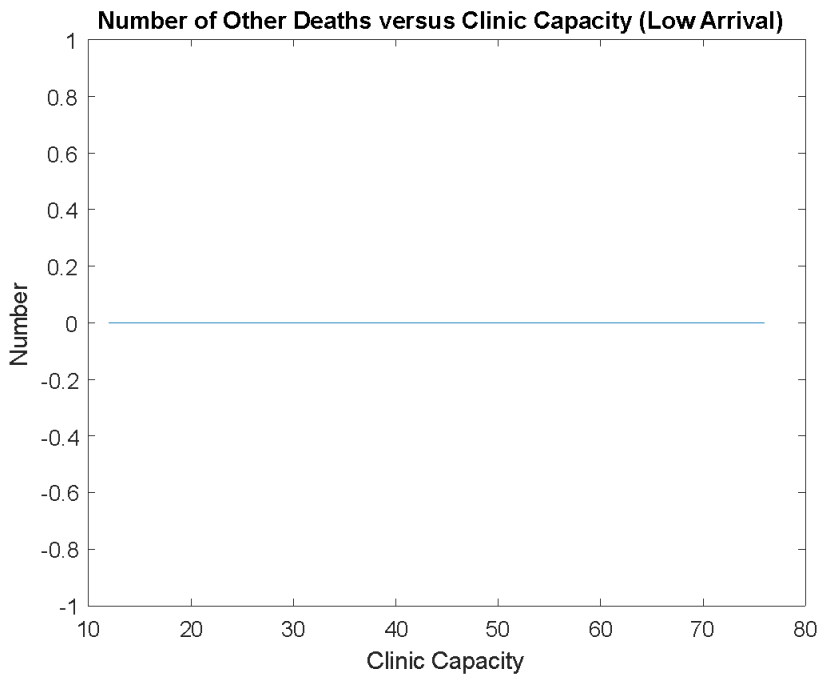


Figure F: Graph of number of other deaths vs. clinic capacity for Allegheny Hospital at a low patient arrival rate.

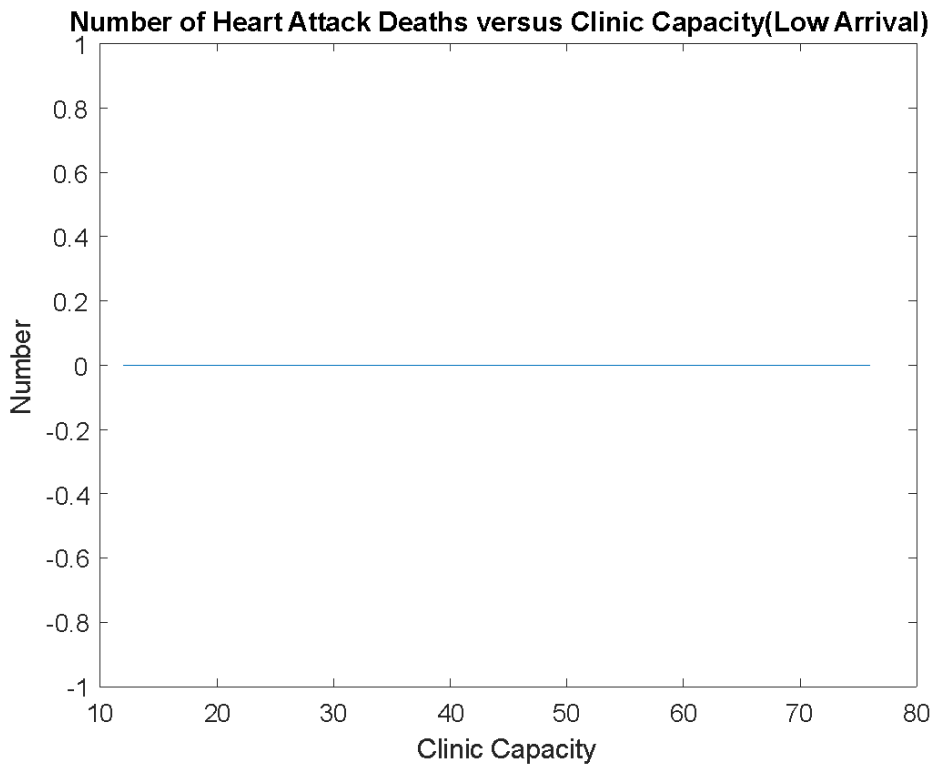


Figure G: Graph of number of heart attack deaths vs. clinic capacity for Allegheny Hospital at a low patient arrival rate.

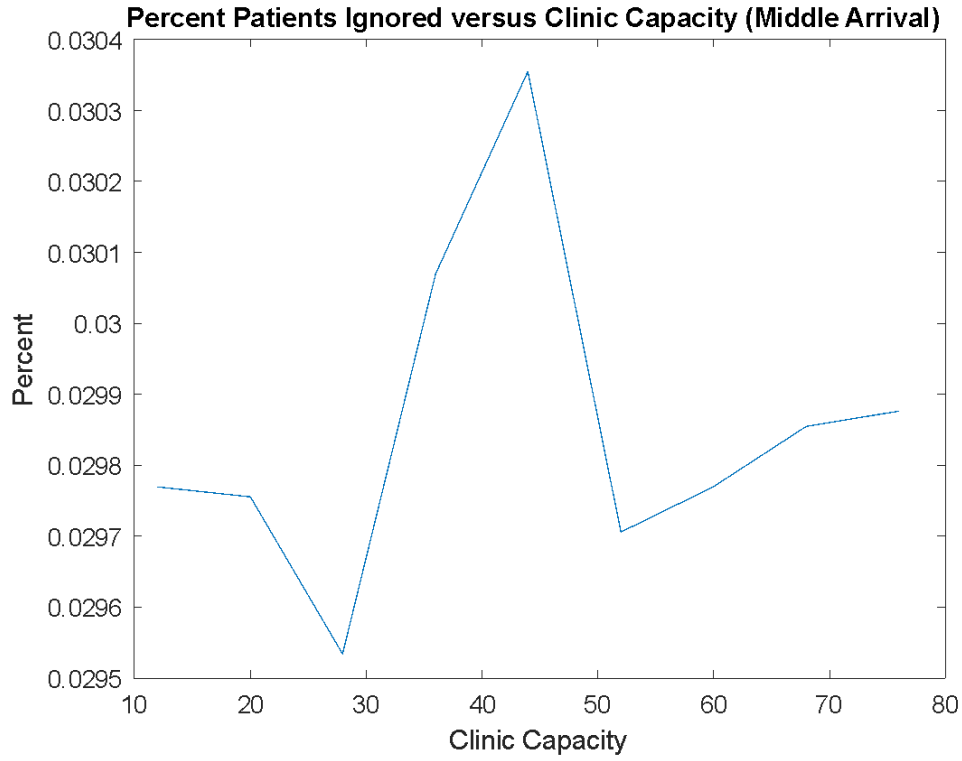


Figure H: Graph of percent of patients ignored vs. clinic capacity for Allegheny Hospital at a middle patient arrival rate.

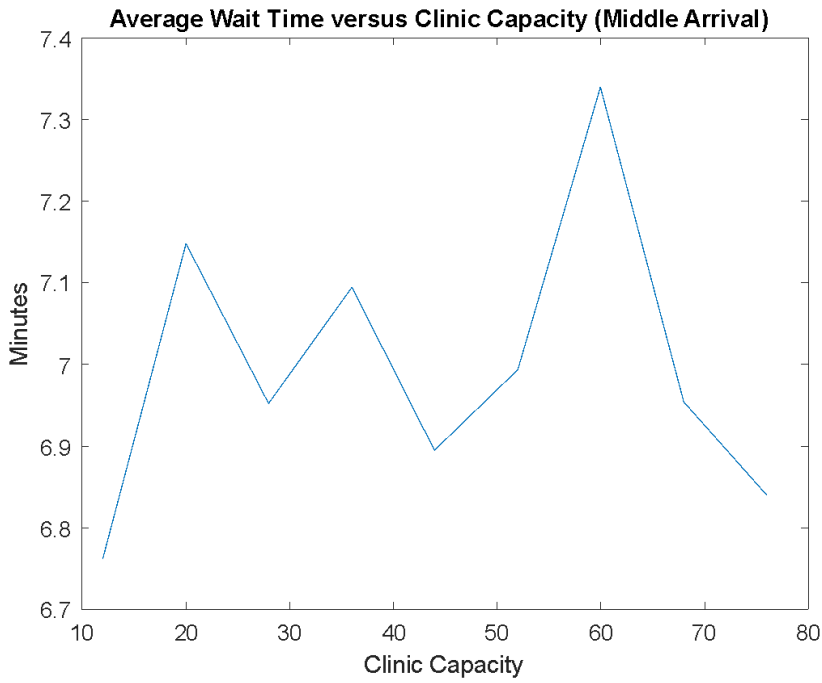


Figure I: Graph of average wait time in minutes vs. clinic capacity for Allegheny Hospital at a middle patient arrival rate.

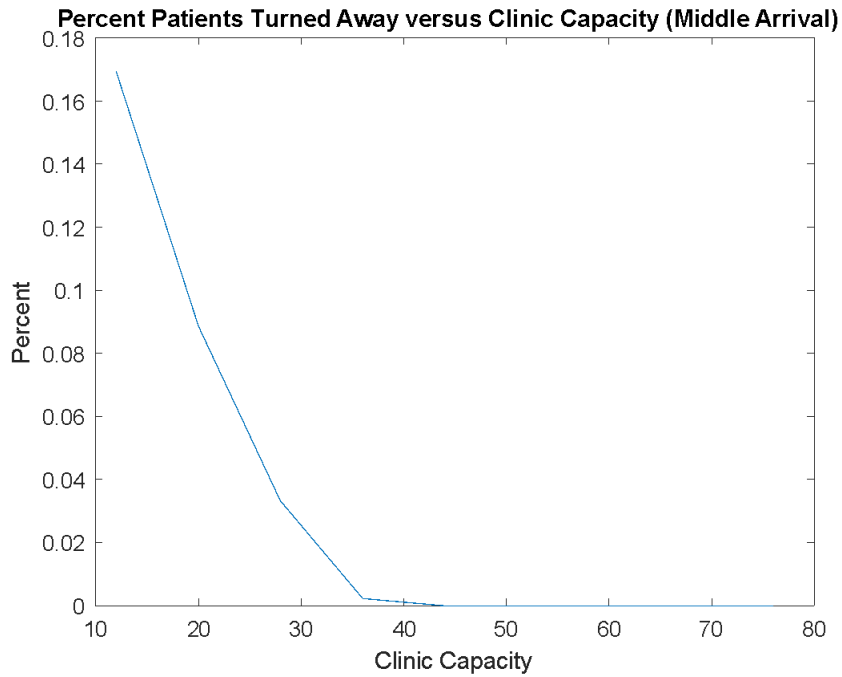


Figure J: Graph of percent of patients turned away vs. clinic capacity for Allegheny Hospital at middle patient arrival rate.

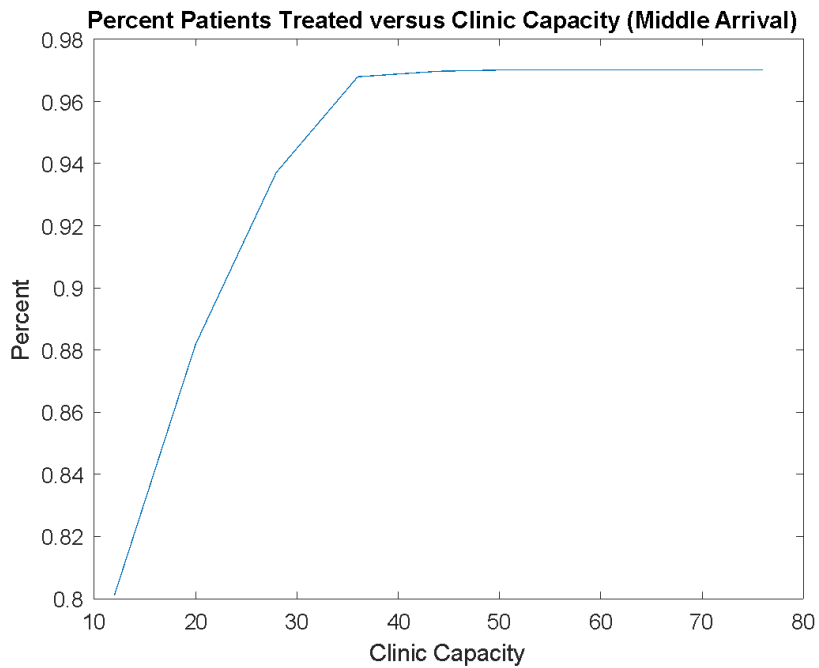


Figure K: Graph of percent of patients treated vs. clinic capacity for Allegheny Hospital at middle patient arrival rate.

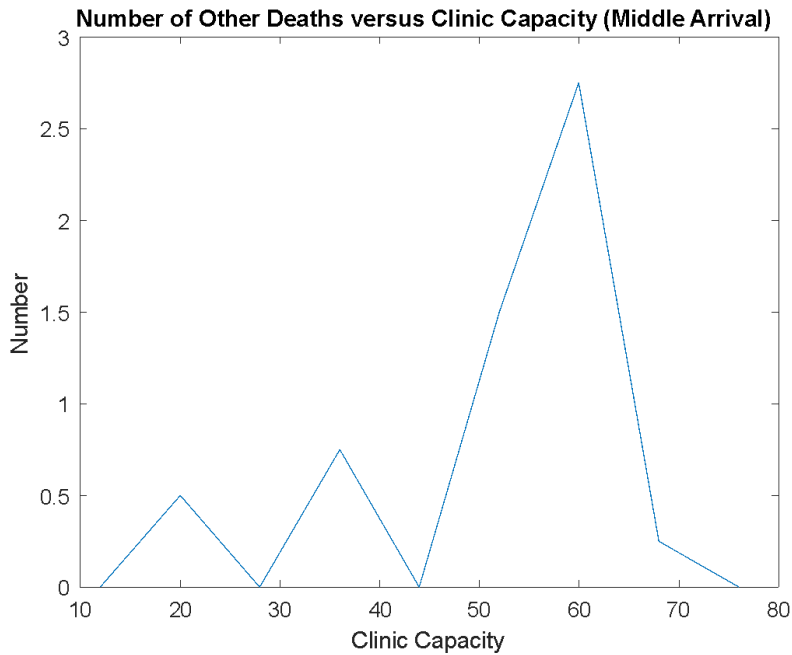


Figure L: Graph of number of other deaths vs. clinic capacity for Allegheny Hospital at middle patient arrival rate.

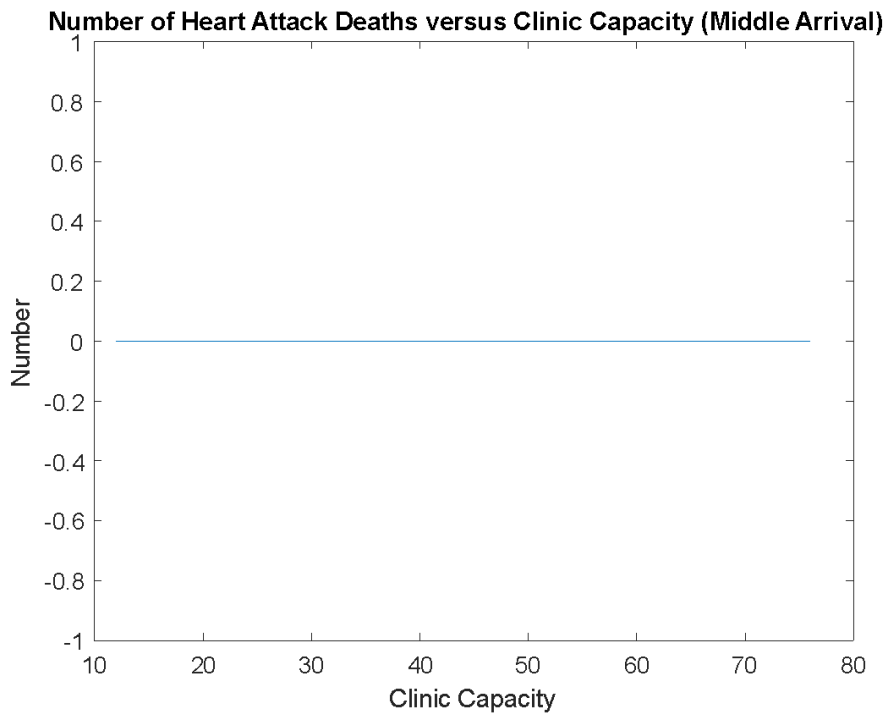


Figure M: Graph of number of heart attack deaths vs. clinic capacity for Allegheny Hospital at middle patient arrival rate.

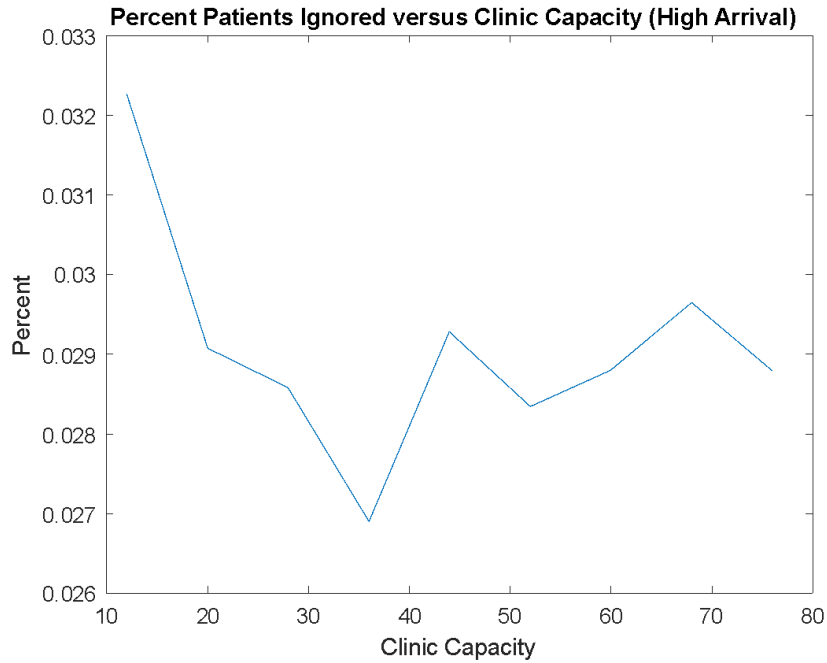


Figure N: Graph of percent of patients ignored vs. clinic capacity for Allegheny Hospital at high patient arrival rate.

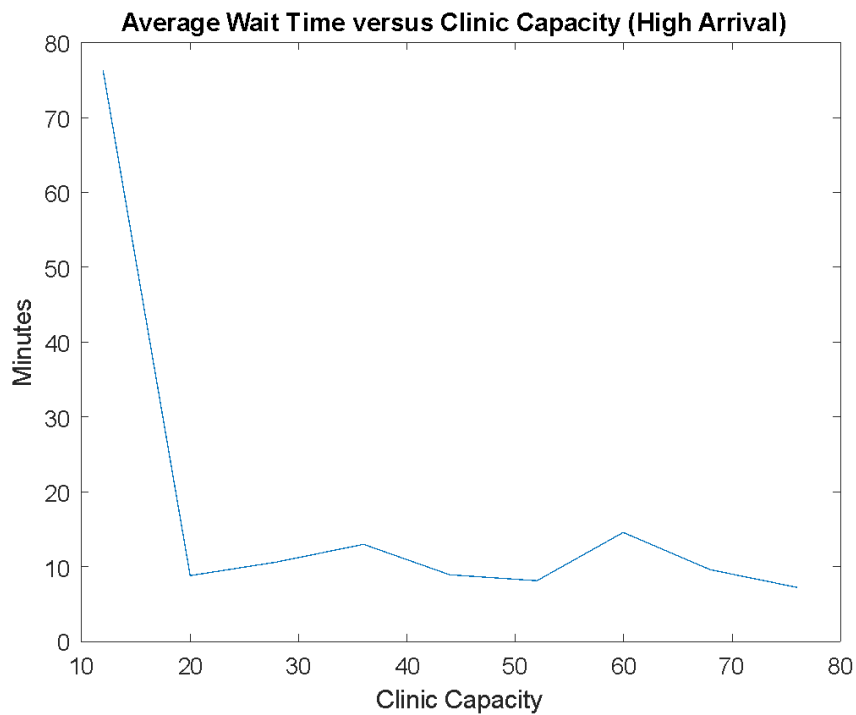


Figure O: Graph of average wait time in minutes vs. clinic capacity at Allegheny Hospital at a high patient arrival rate.

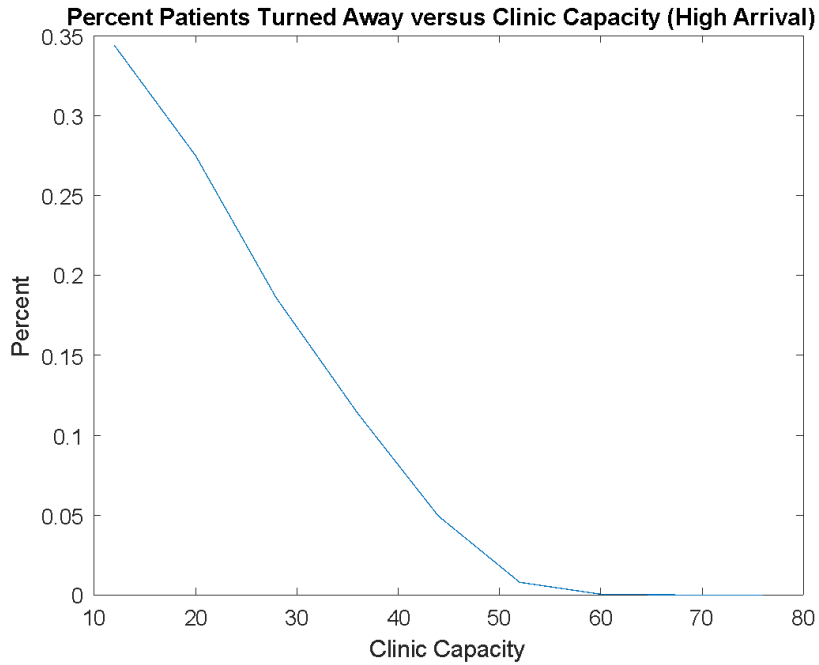


Figure P: Graph of percent of patients turned away vs. clinic capacity for Allegheny Hospital at a high patient arrival rate.

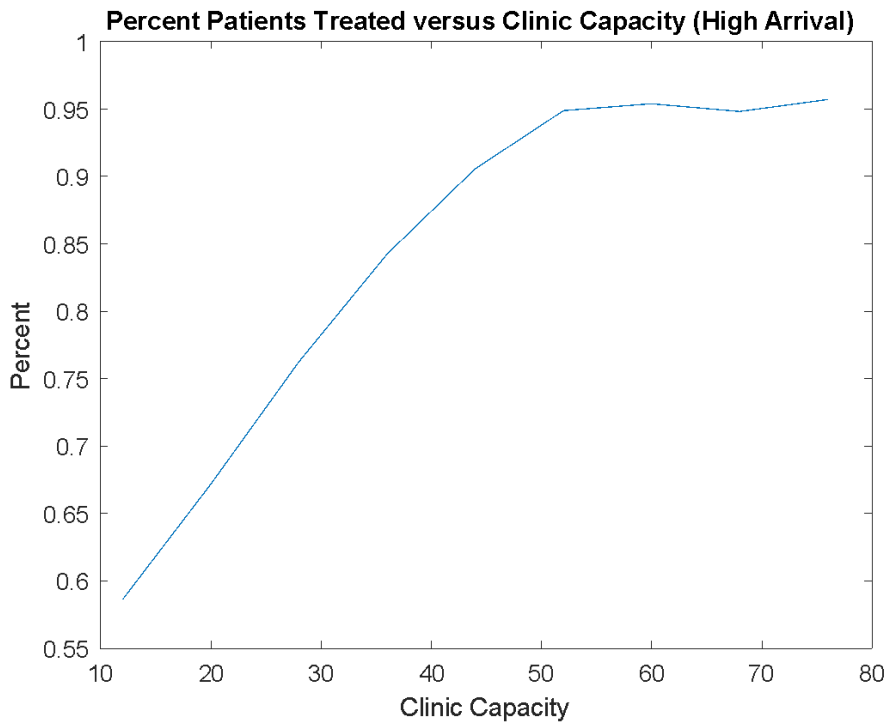


Figure Q: Graph of percent of patients treated vs. clinic capacity at Allegheny Hospital at a high patient arrival rate.

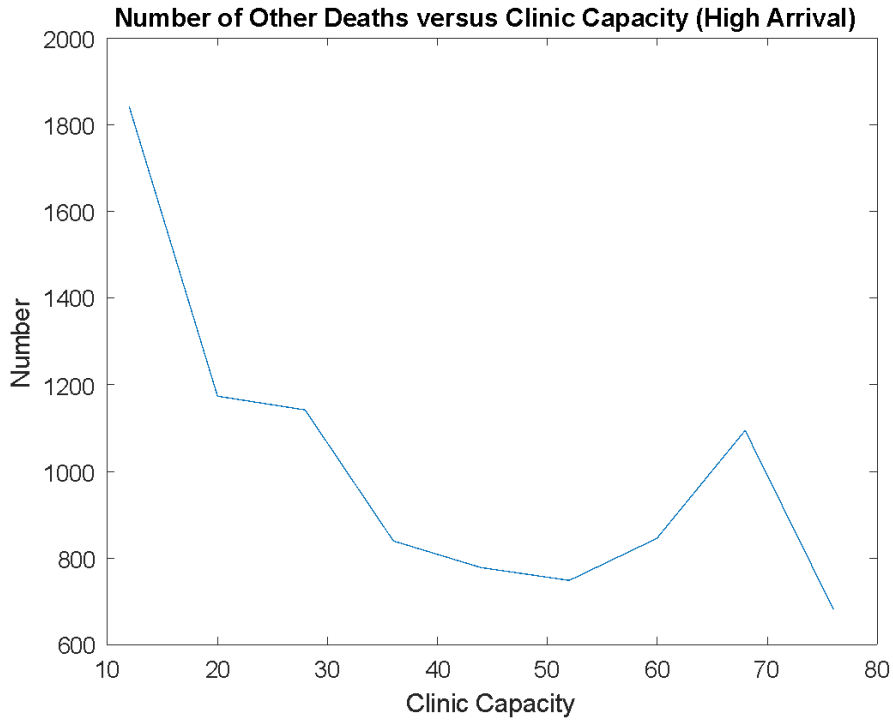


Figure R: Graph of number of other deaths vs. clinic capacity for Allegheny Hospital at a high patient arrival rate.

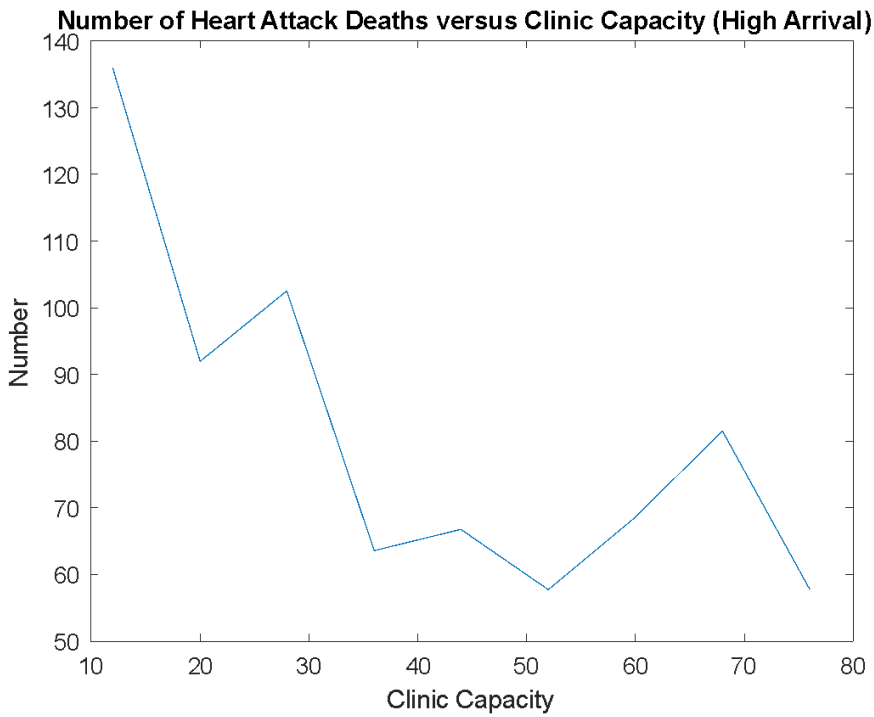


Figure S: Graph of number of heart attack deaths vs. clinic capacity for Allegheny Hospital at a high patient arrival rate.

