

Images

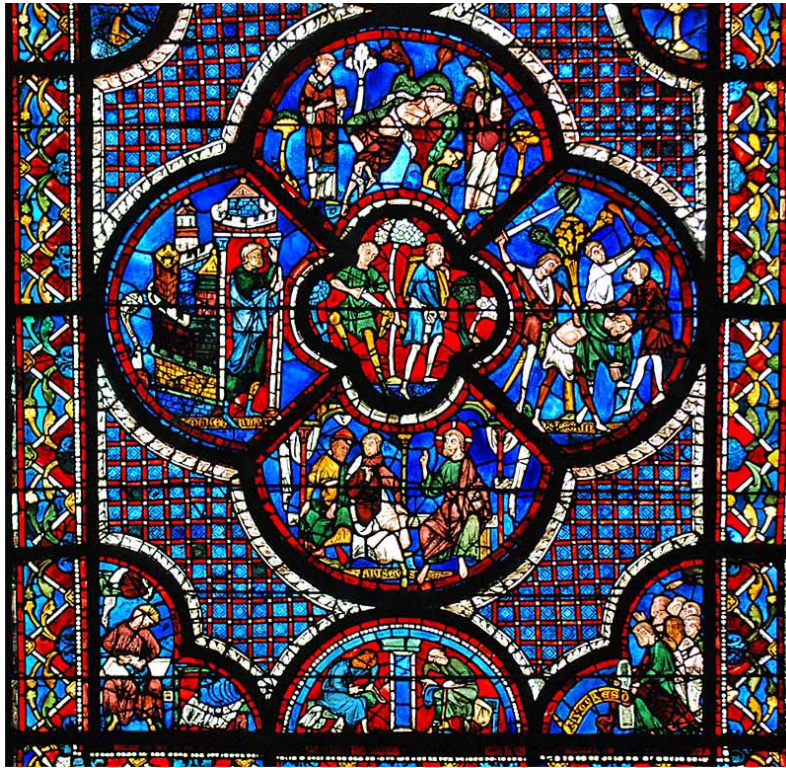


Figure 1: *The Good Samaritan Window, Chartres*  
C. 1145-1155



Figure 2: *The Good Samaritan Window, Shoemakers*  
C. 1145-1155



*Figure 3: Confessors with St. Theodore, South Transsept of Chartres Cathedral 1220-1230*



*Figure 4: Sainte-Chapelle de Paris Interior 13th century*



*Figure 5: Sainte Chapelle de Paris, Interior 13th Century*



*Figure 6: Sainte Chapelle de Paris Interior 13th Century*

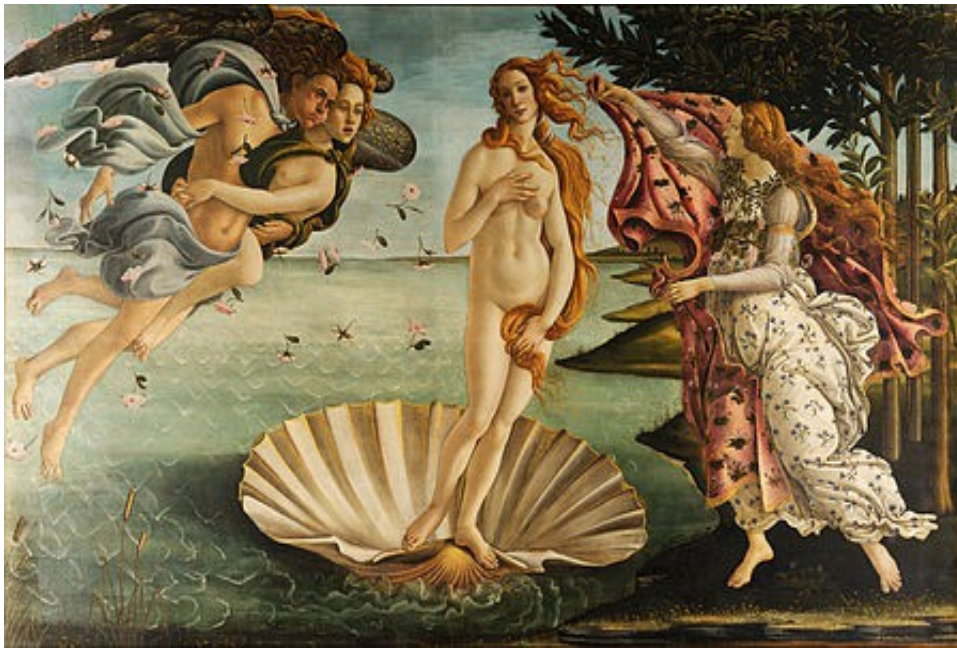


Figure 7: Botticelli, "The Birth of Venus," 1480s, tempera on canvas.

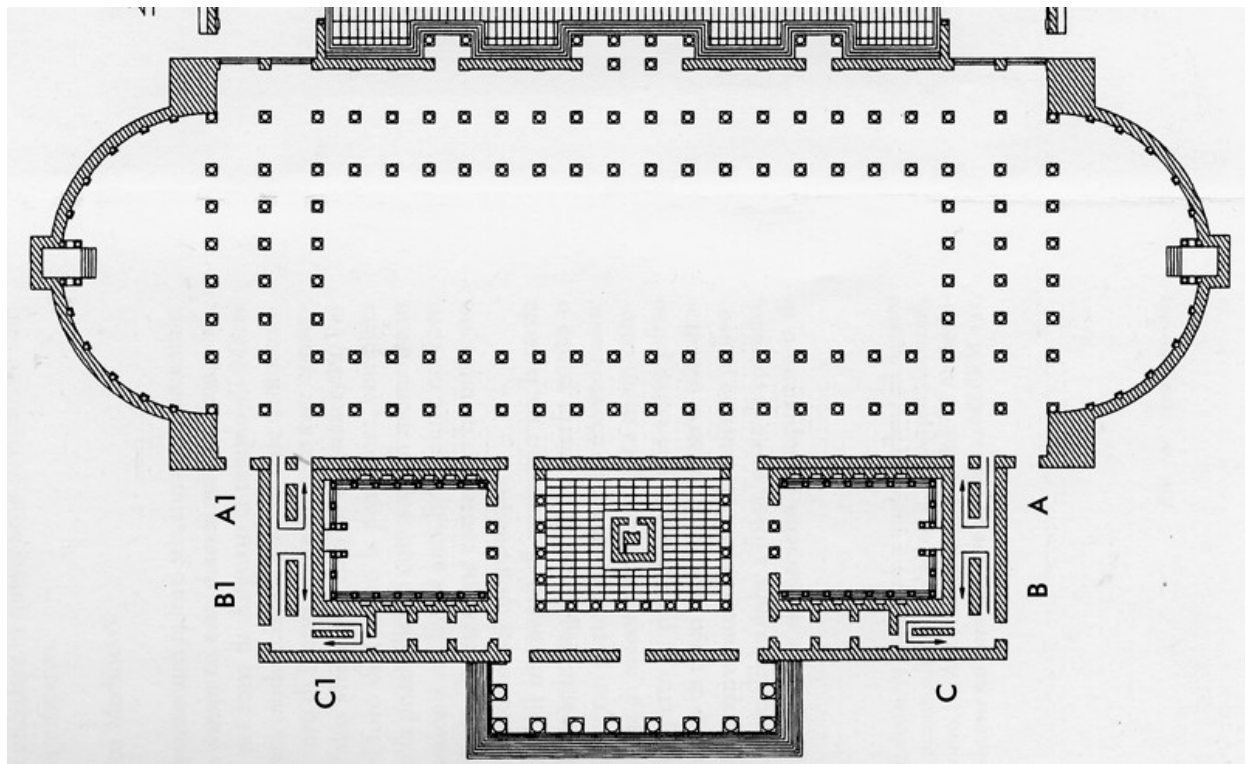
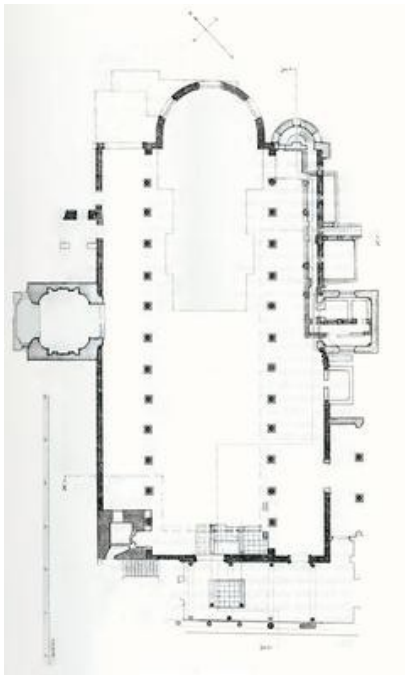


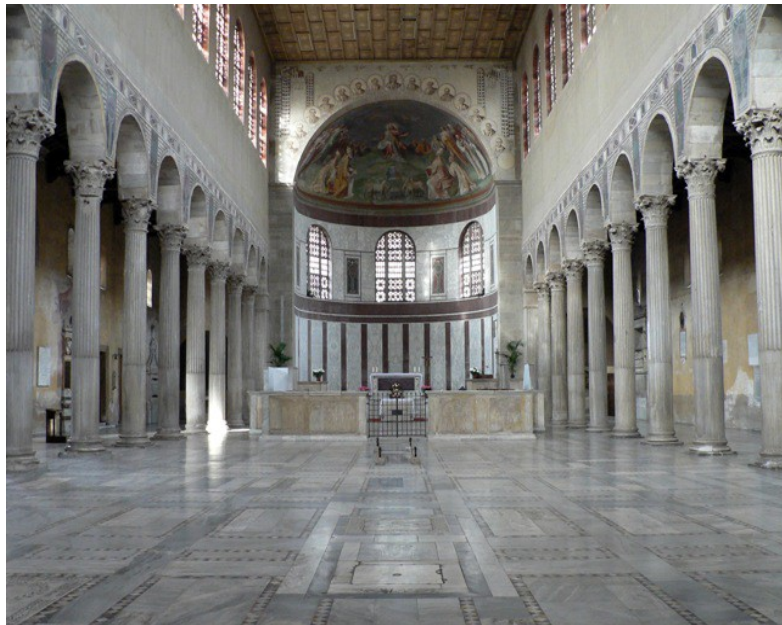
Figure 8: Basilica Ulpia, 110 CE, Floor plan, Trajan's Forum, Rome.



*Figure 0: Basilica Ulpia, Interior*



*Figure 10: Santa Sabina,  
Floor plan 470 CE Rome*



*Figure 11: Santa Sabina, Interior*

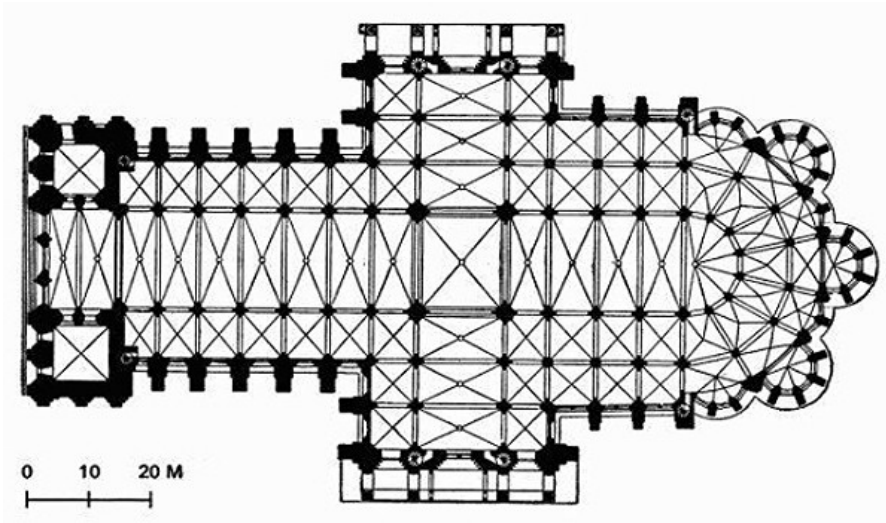


Figure 12: Chartres Cathedral Floor plan 13th century

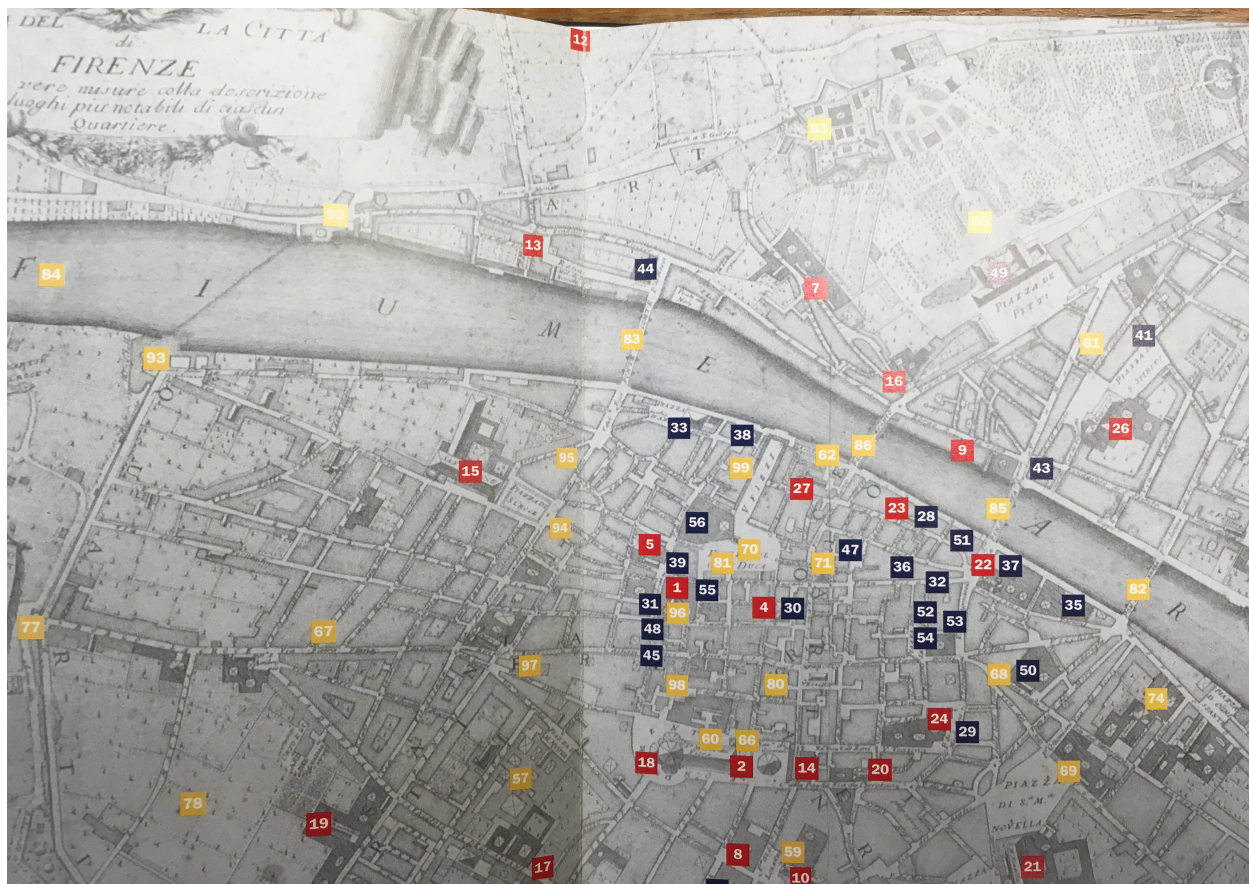


Figure 13: Map of Florence - San Miniato al Monte is 12, note the map is oriented with north at the bottom,



Figure 14: San Miniato al Monte, Exterior, 1018-1207, Florence



Figure 15: San Miniato al Monte, Frescos



Figure 16: San Miniato al Monte Interior

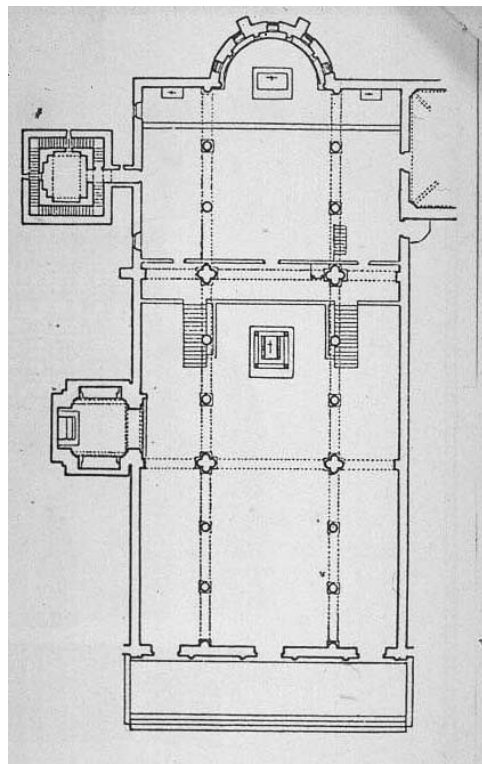


Figure 17: San Miniato al Monte, Floor plan



Figure 18: San Miniato al Monte Zodiac mosaic



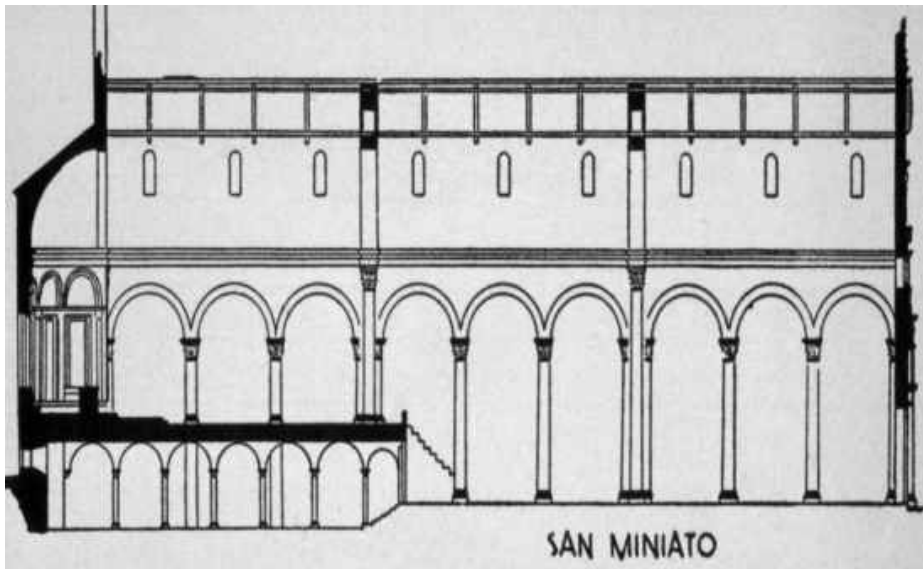


Figure 10: San Miniato al Monte. Cross plan



Figure 20: San Miniato al Monte. Cross