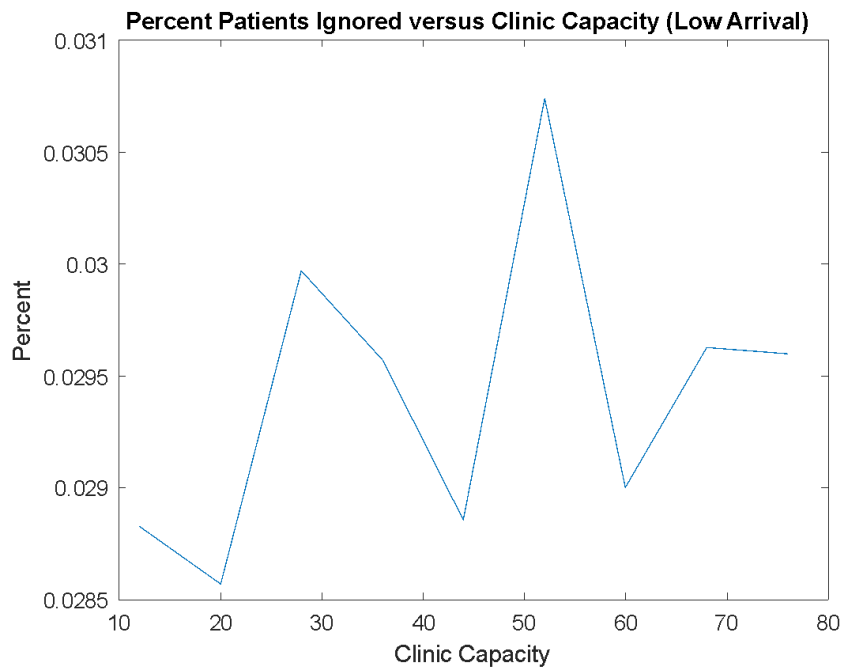


### Supplementary Figure 8 (S8): Forbes Hospital Clinic Data

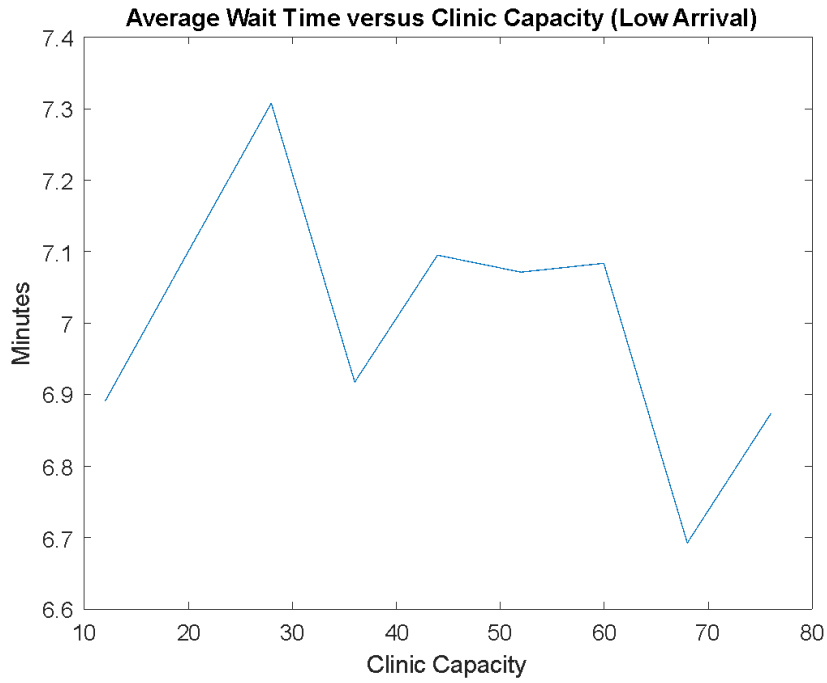
Heart Attacks at Forbes Hospital with Co-Located Primary Clinic at Different Capacities

	12	20	28	36	44	52	60	68	76
Low Patient Arrival	0 ± 0	0 ± 0	0 ± 0	0 ± 0	0 ± 0	0 ± 0	0 ± 0	0 ± 0	0 ± 0
Middle Patient Arrival	2 ± 1.83	2.75 ± 4.86	4.5 ± 2.38	2.25 ± 1.7	4.25 ± 2.06	5.25 ± 2.87	4 ± 6.73	4 ± 2.83	7.5 ± 5.5
High Patient Arrival	125 ± 8.4	124 ± 13.5	113 ± 4.08	130.5 ± 5.45	123 ± 16.65	110.75 ± 17.17	117.75 ± 5.74	114.75 ± 20.17	131.25 ± 27.04

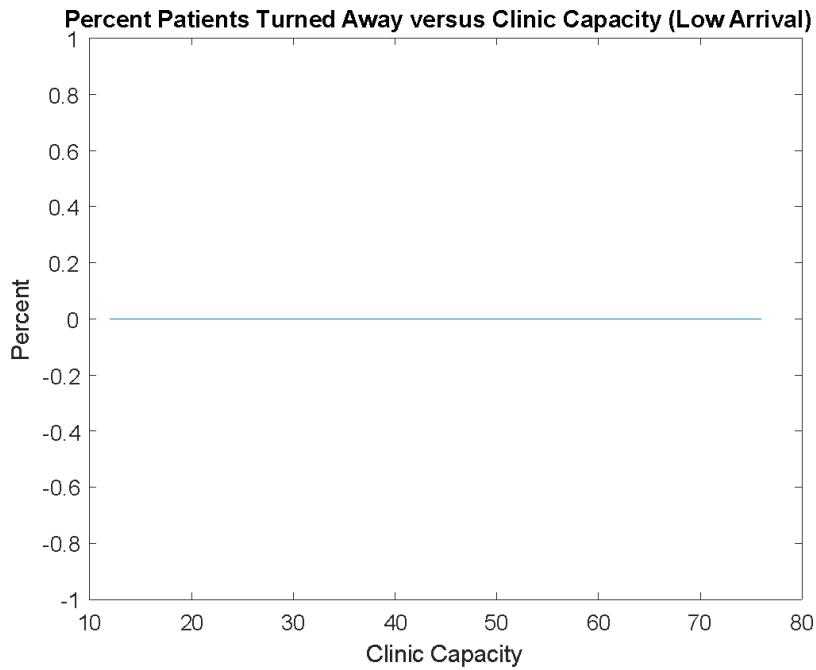
**Figure A:** Forbes Hospital heart attack frequencies with the addition of the primary clinic at varying capacities.



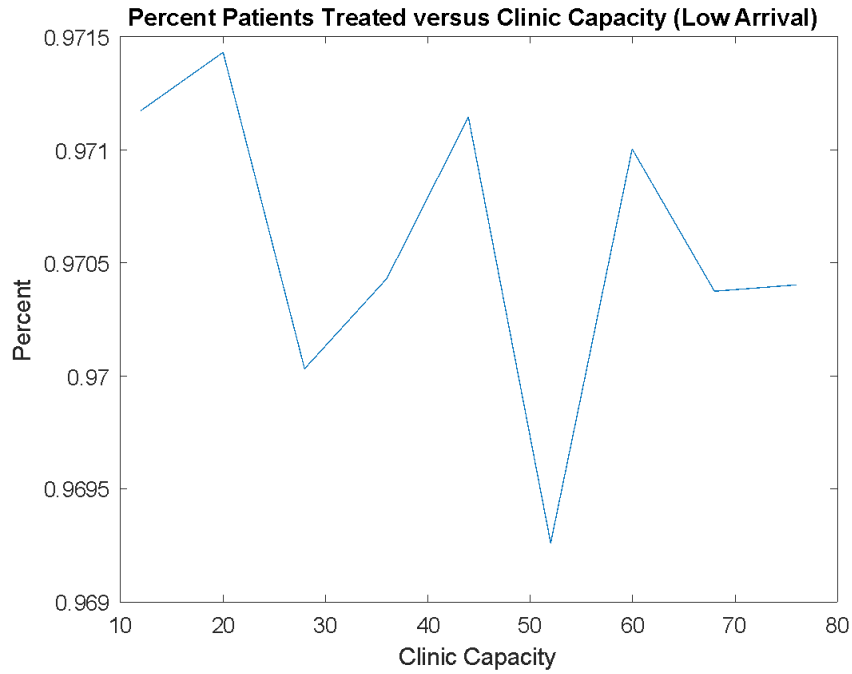
**Figure B:** Graph of percent of patients ignored vs. clinic capacity for Forbes Hospital at a middle patient arrival rate.



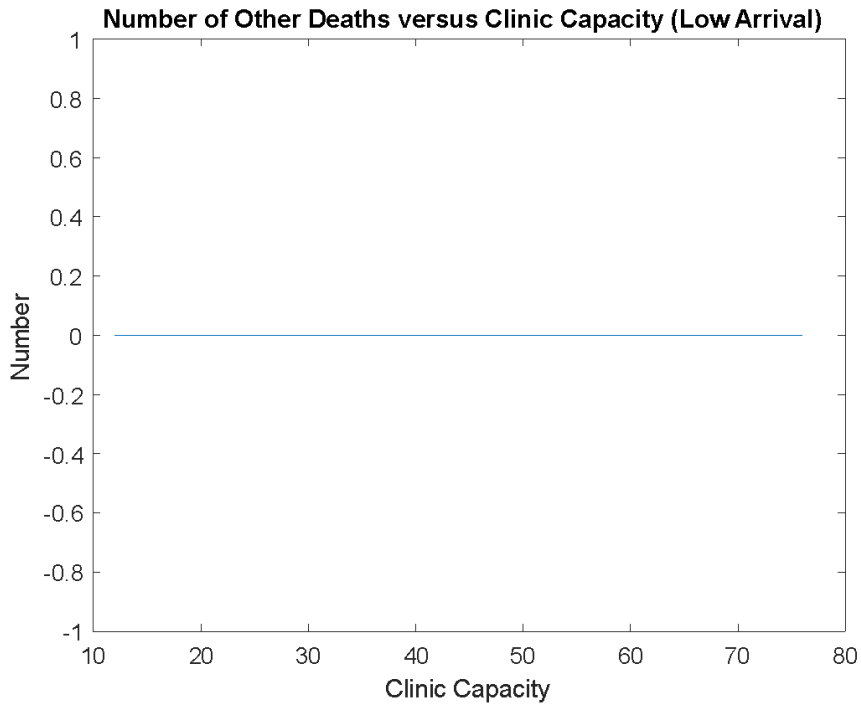
**Figure C:** Graph of time elapsed (minutes) vs. clinic capacity for Forbes Hospital with the addition of the primary clinic at a low patient arrival rate.



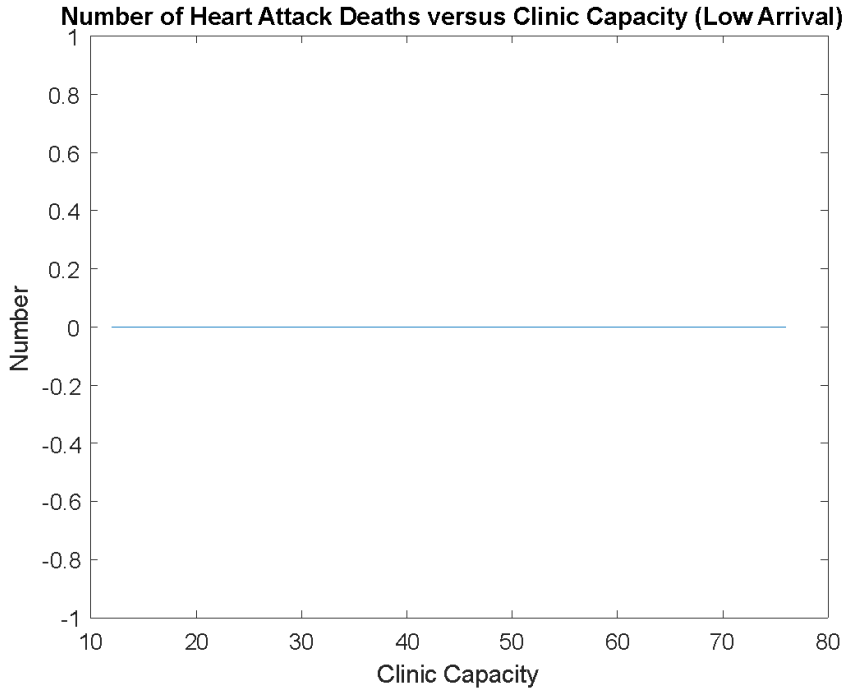
**Figure D:** Graph of percent of patients turned away vs. clinic capacity for Forbes Hospital.



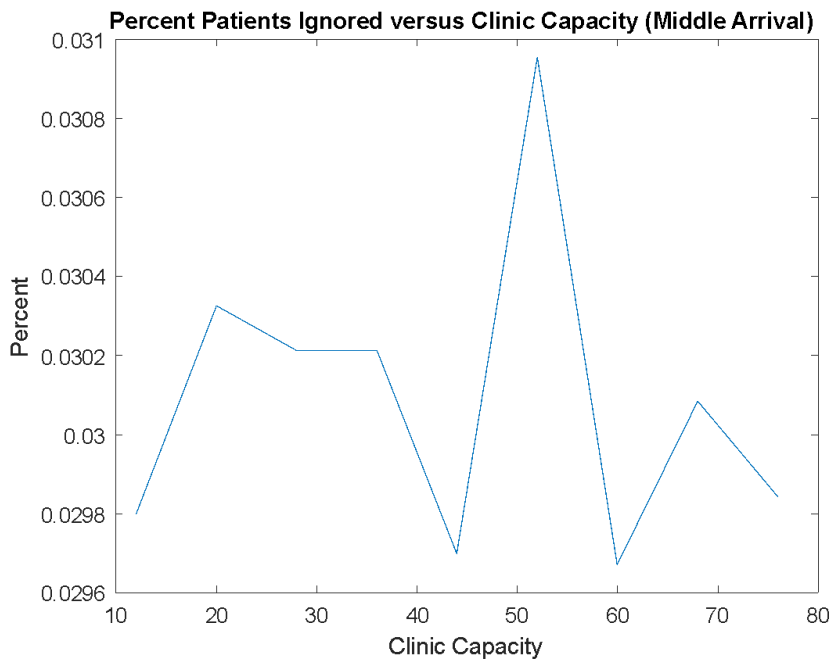
**Figure E:** Graph of percent of patients treated vs. clinic capacity for Forbes Hospital at a low arrival rate.



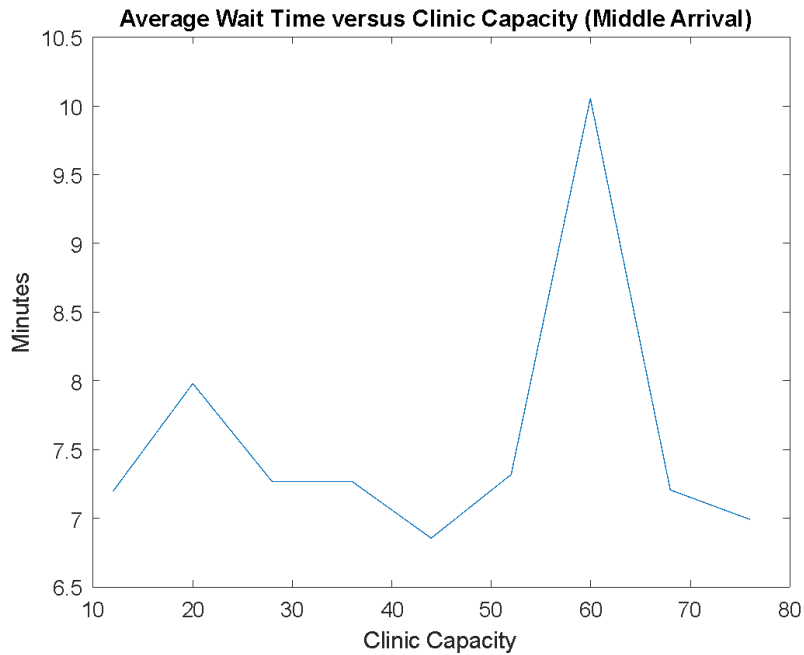
**Figure F:** Graph of number of other deaths vs. clinic capacity for Forbes Hospital at a low patient arrival rate.



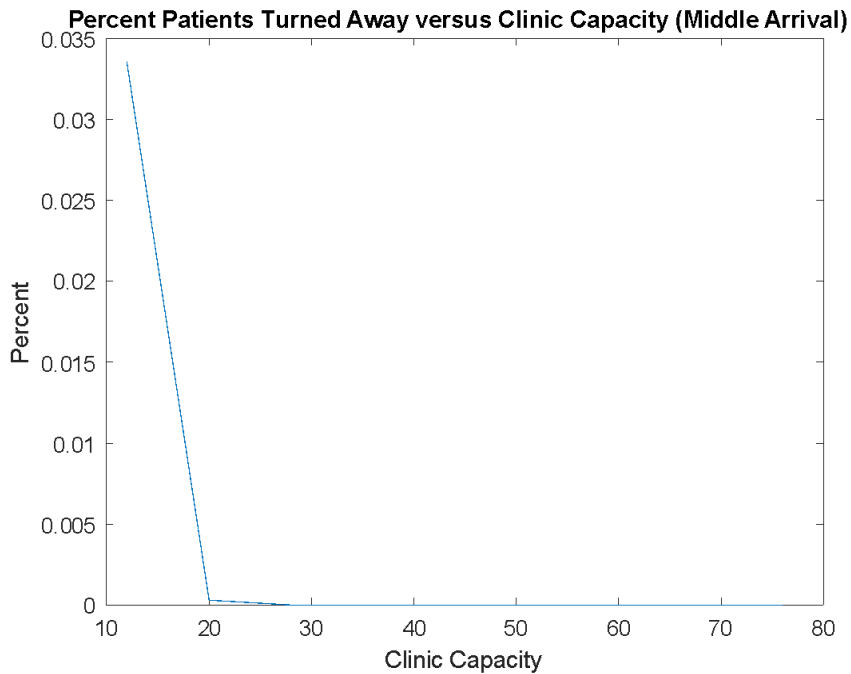
**Figure G:** Graph of number of heart attack deaths vs. clinic capacity for Forbes Hospital at a low patient arrival rate.



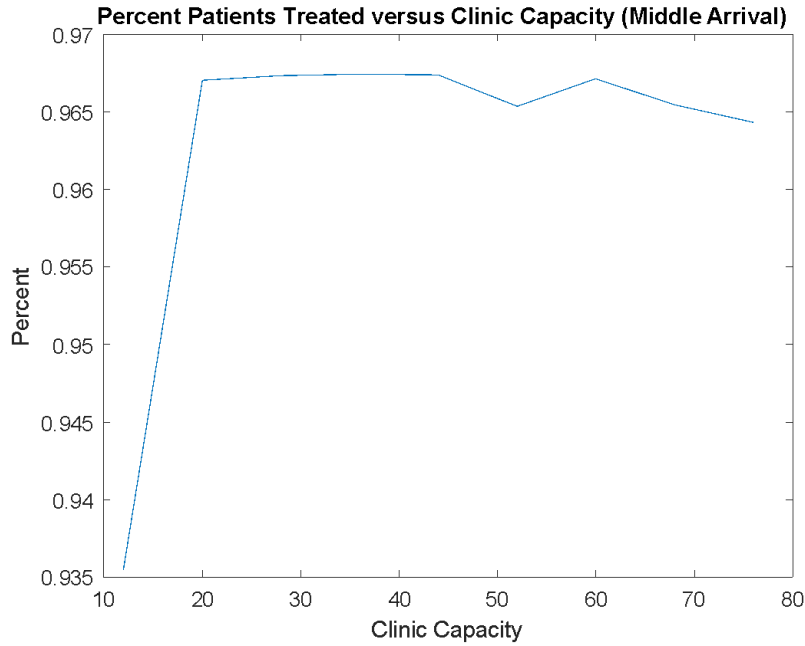
**Figure H:** Graph of percent of patients ignored vs. clinic capacity for Forbes Hospital at a middle patient arrival rate.



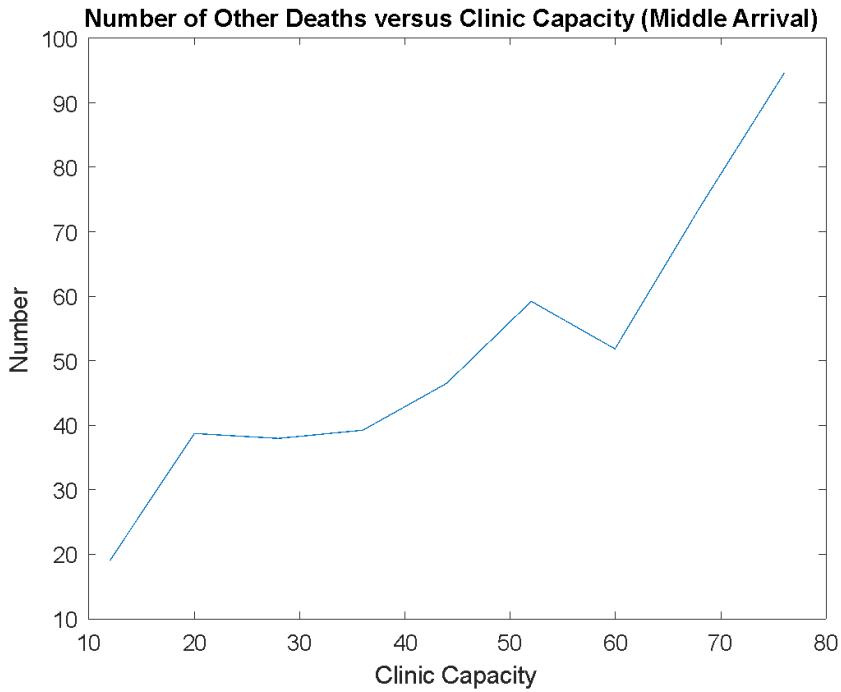
**Figure I:** Graph of average wait time in minutes vs. clinic capacity for Forbes Hospital at a middle patient arrival rate.



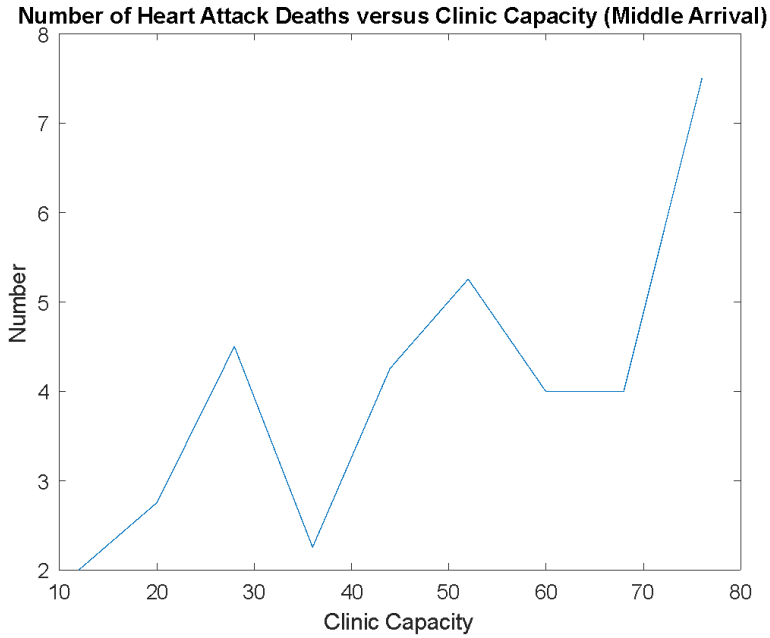
**Figure J:** Graph of percent of patients turned away vs. clinic capacity for Forbes Hospital at middle patient arrival rate.



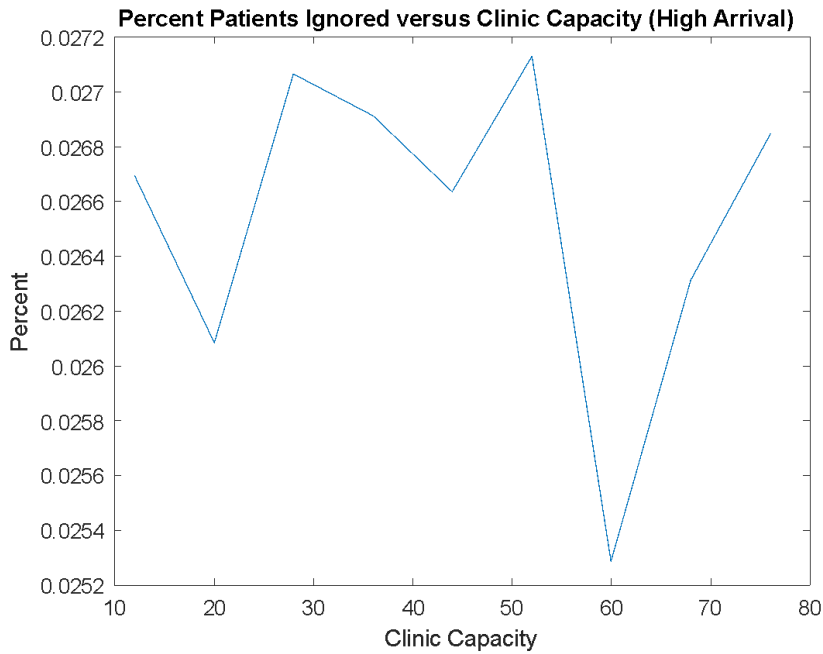
**Figure K:** Graph of percent of patients treated vs. clinic capacity for Forbes Hospital at middle patient arrival rate.



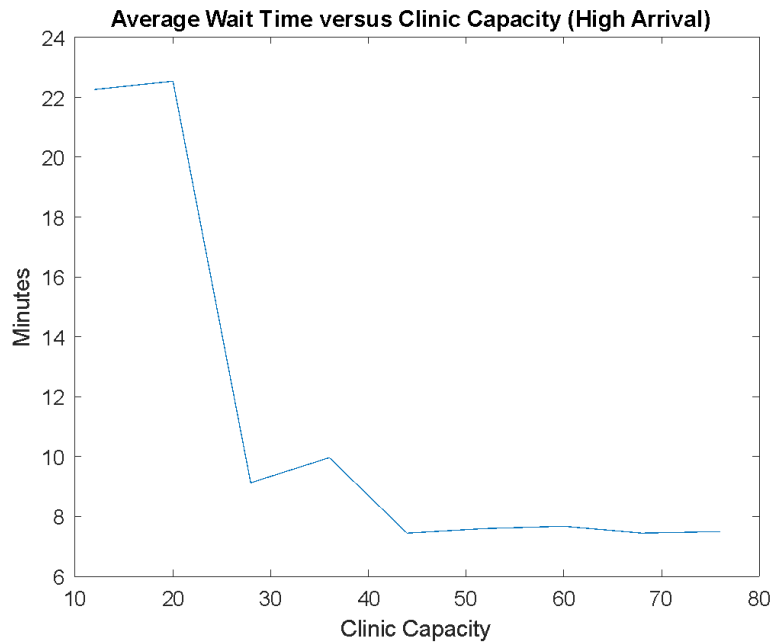
**Figure L:** Graph of number of other deaths vs. clinic capacity for Forbes Hospital at middle patient arrival rate.



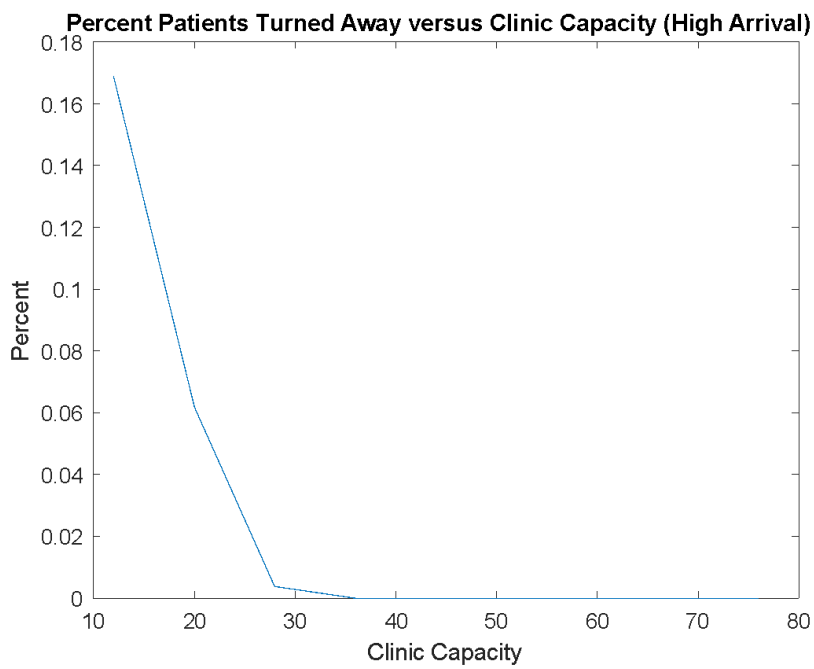
**Figure M:** Graph of number of heart attack deaths vs. clinic capacity for Forbes Hospital at middle patient arrival rate.



**Figure N:** Graph of percent of patients ignored vs. clinic capacity for Forbes Hospital at high patient arrival rate.

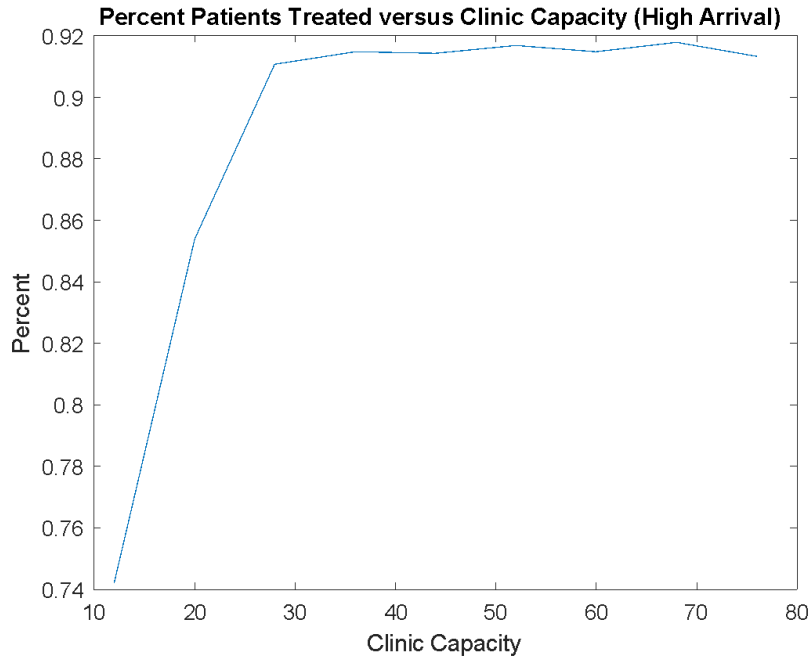


**Figure O:** Graph of average wait time in minutes vs. clinic capacity at Forbes Hospital at a high patient arrival rate.

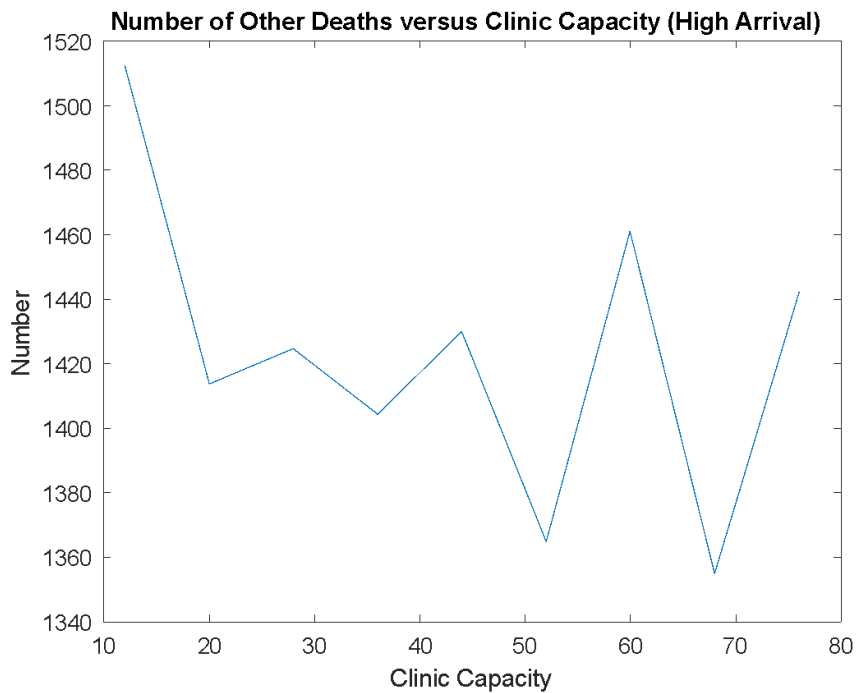


**Figure P:** Graph of percent of patients turned away vs. clinic capacity for Forbes Hospital at a high patient arrival rate.

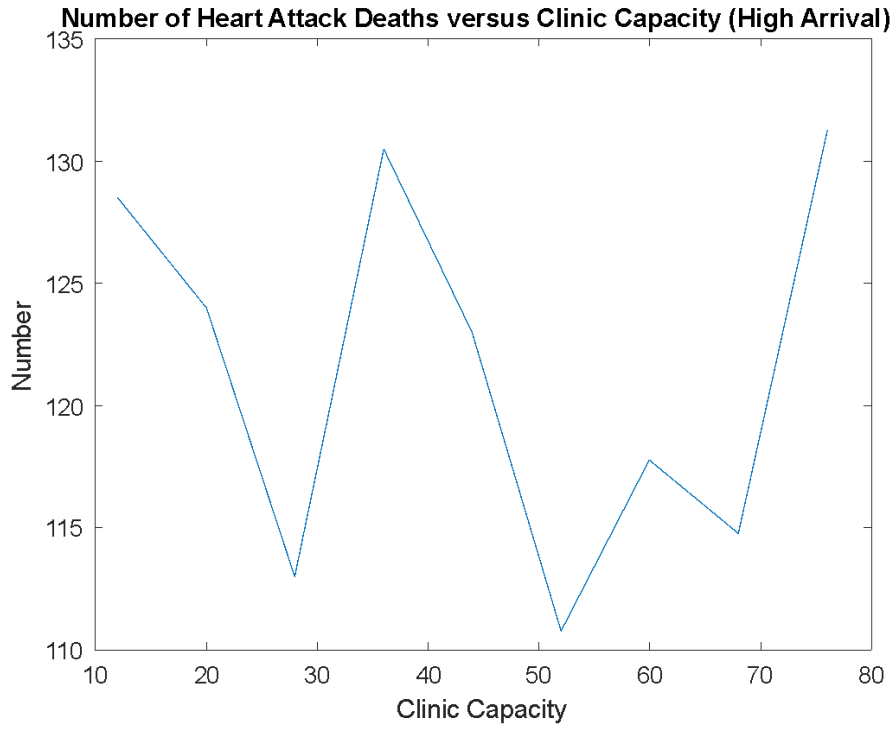




**Figure Q:** Graph of percent of patients treated vs. clinic capacity at Forbes Hospital at a high patient arrival rate.



**Figure R:** Graph of number of other deaths vs. clinic capacity for Forbes Hospital at a high patient arrival rate.



**Figure S:** Graph of number of heart attack deaths vs. clinic capacity for Forbes Hospital at a high patient arrival rate.