

Supplementary Figure 9 (S9): Forbes Hospital Telehealth Data

Heart Attacks at Forbes Hospital with Telehealth at Different Capacities

	24	40	56	72	88	104	120	136	152
Low Patient Arrival	0 ± 0	0 ± 0	0 ± 0	0 ± 0	0 ± 0	0 ± 0	0 ± 0	0 ± 0	0 ± 0
Middle Patient Arrival	0.75 ± 1.5	0 ± 0	2 ± 2.45	1.5 ± 2.38	3.25 ± 3.95	3 ± 2.58	1.5 ± 1.29	0.75 ± 0.5	1.5 ± 1.29
High Patient Arrival	117.75 ± 11.7	102 ± 16.47	117.25 ± 12.28	105.5 ± 14.36	111.25 ± 18.63	113 ± 5.94	102.25 ± 11.87	115 ± 11.6	122.25 ± 11.35

Figure A: Table of heart attack data for Forbes Hospital with telehealth at different capacities for different patient arrival rates.

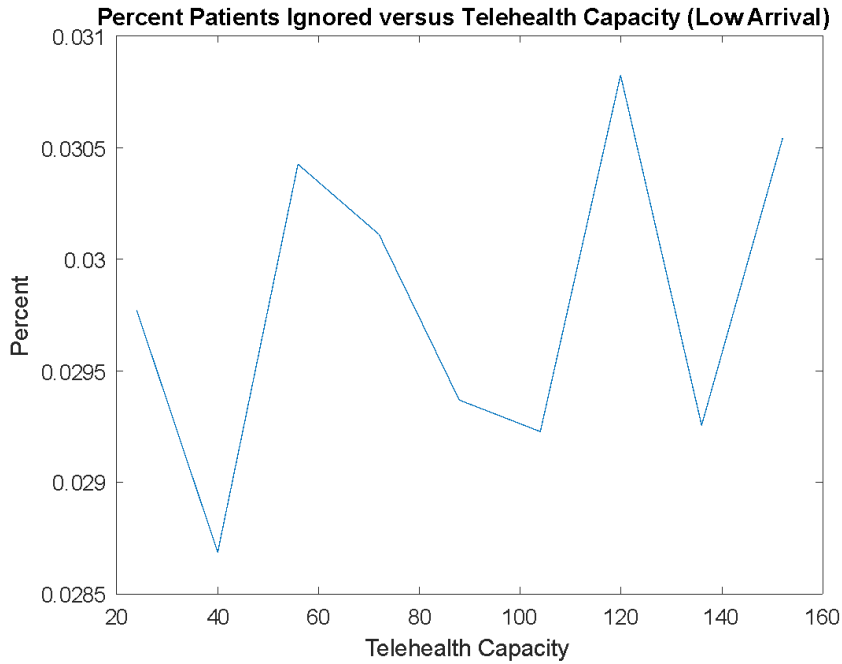


Figure B: Graph of percent of patients ignored vs. telehealth capacity for Forbes Hospital at a low patient arrival rate.

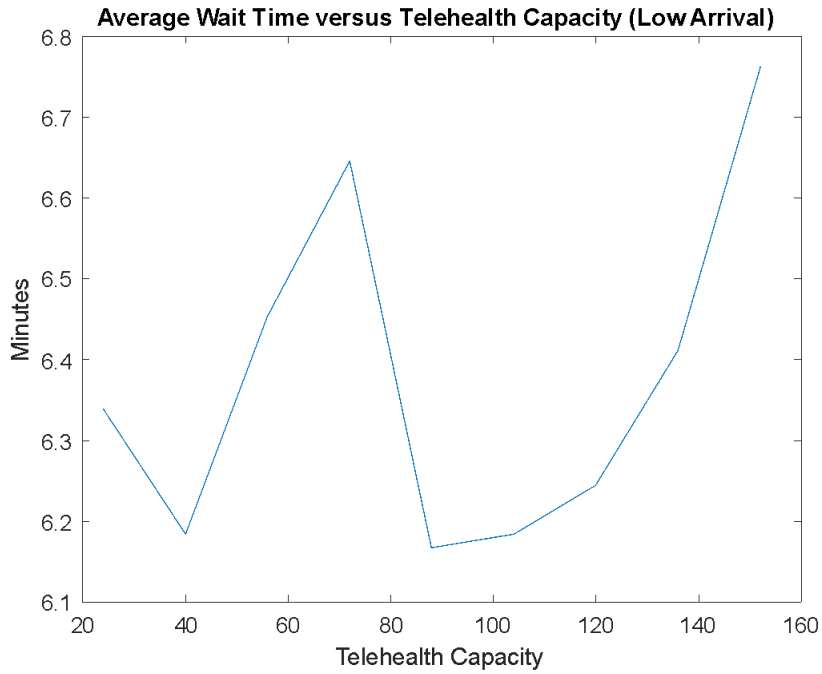


Figure C: Graph of average wait time (minutes) vs. telehealth capacity for Forbes Hospital at a low patient arrival rate.

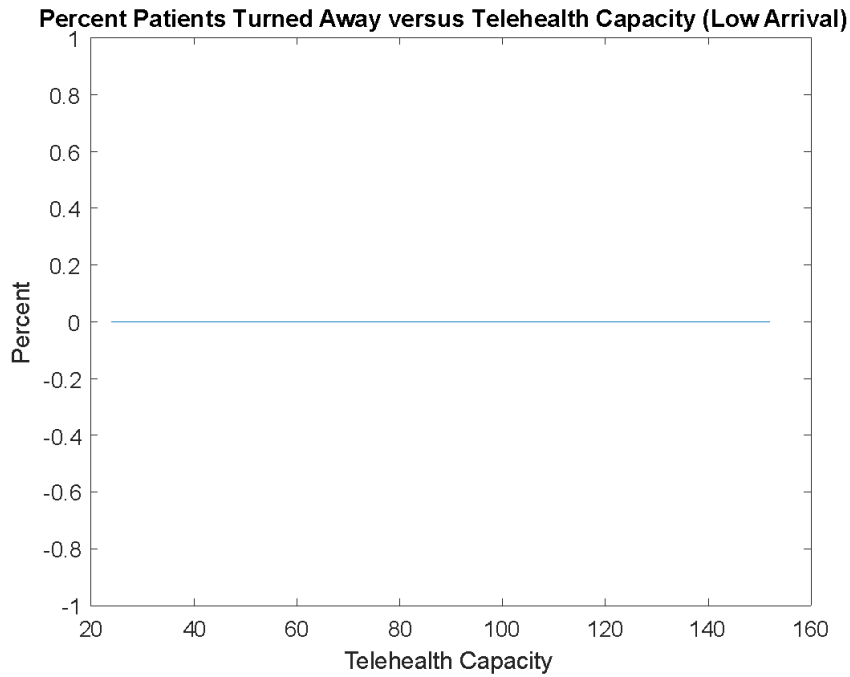


Figure D: Graph of percent of patients turned away vs. telehealth capacity for Forbes Hospital at a low patient arrival rate.

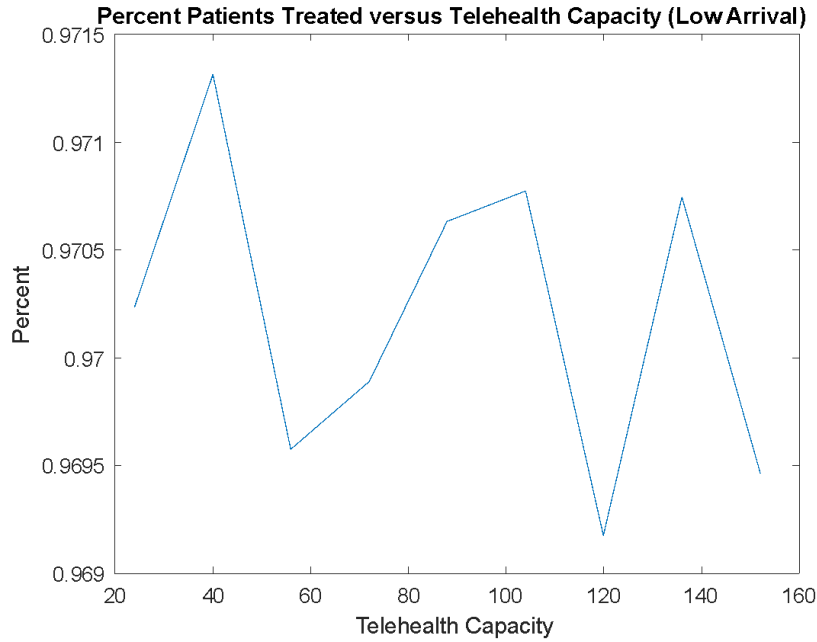


Figure E: Graph of percent of patients treated vs. telehealth capacity for Forbes Hospital at a low patient arrival rate.

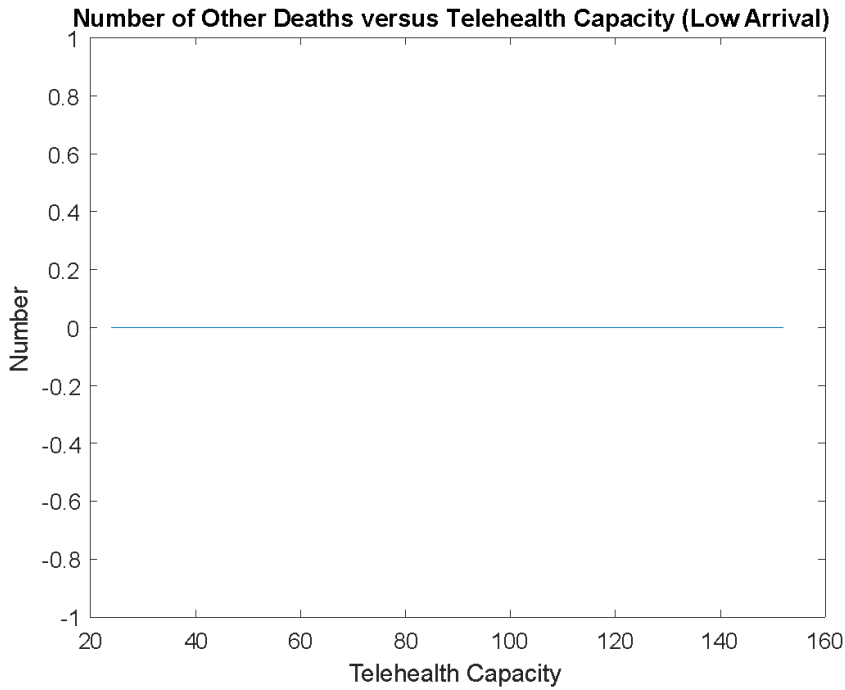


Figure F: Graph of number of other deaths vs. telehealth capacity for Forbes Hospital at a low patient arrival rate.

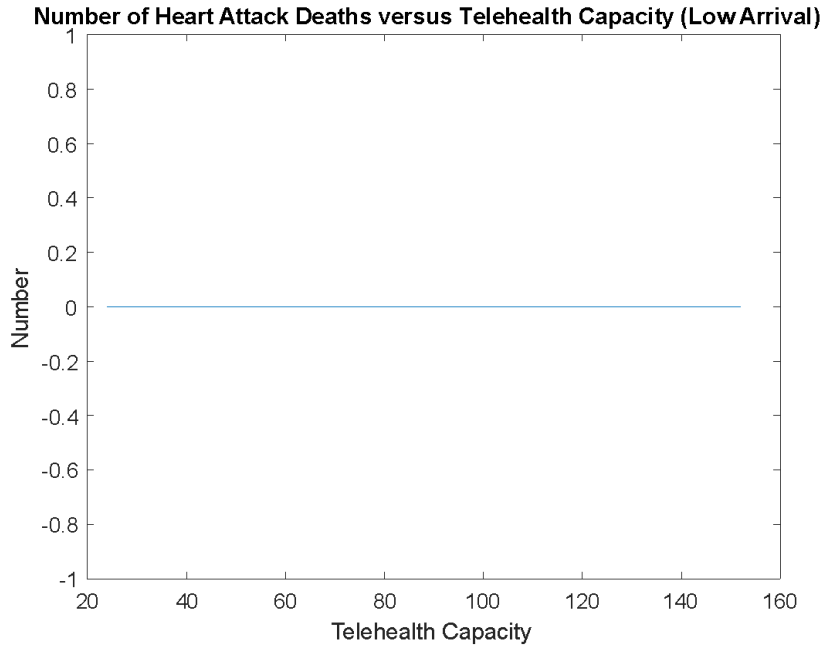


Figure G: Graph of number of heart attack deaths vs. telehealth capacity for Forbes Hospital at a low patient arrival rate.

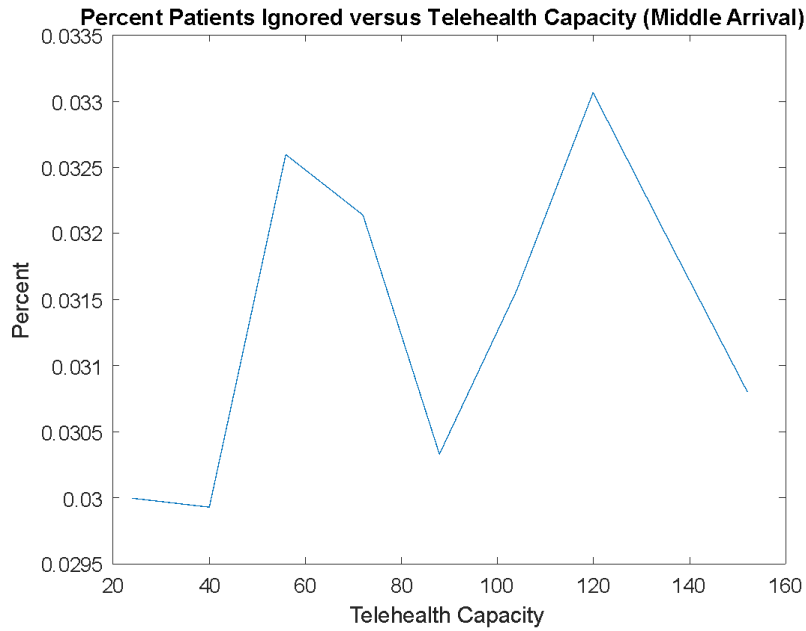


Figure H: Graph of percent of patients ignored vs. telehealth capacity for Forbes Hospital at a middle patient arrival rate.

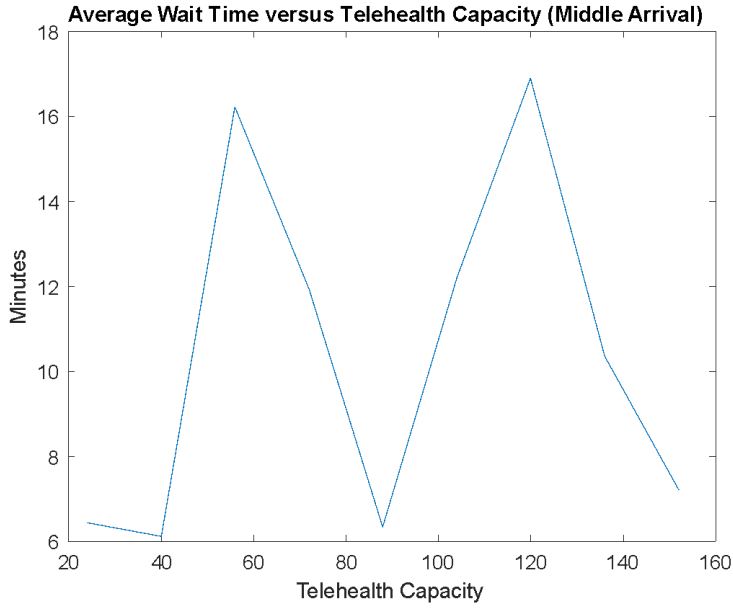


Figure I: Graph of average wait time (minutes) vs. telehealth capacity for Forbes Hospital at middle patient arrival rate.

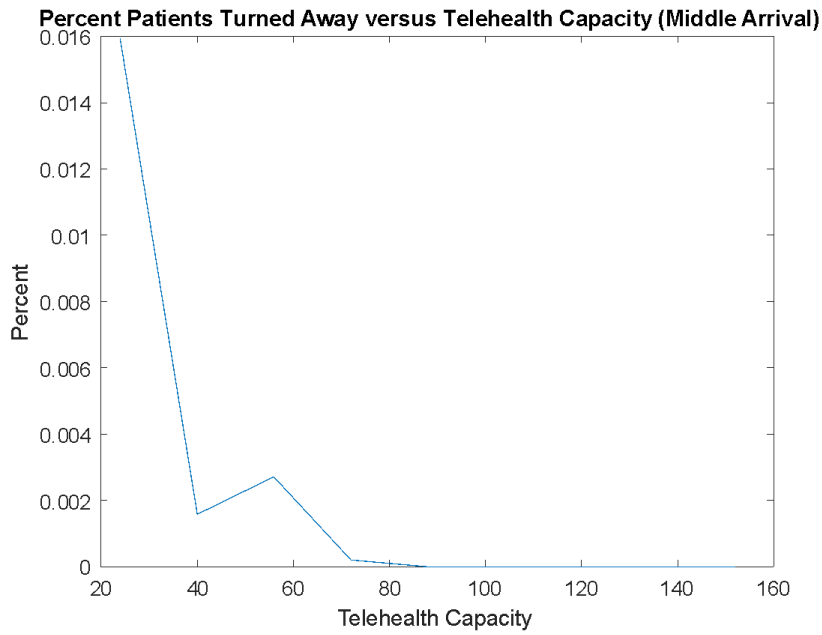


Figure J: Graph of percent of patients turned away vs. telehealth capacity for Forbes Hospital at middle patient arrival rate.

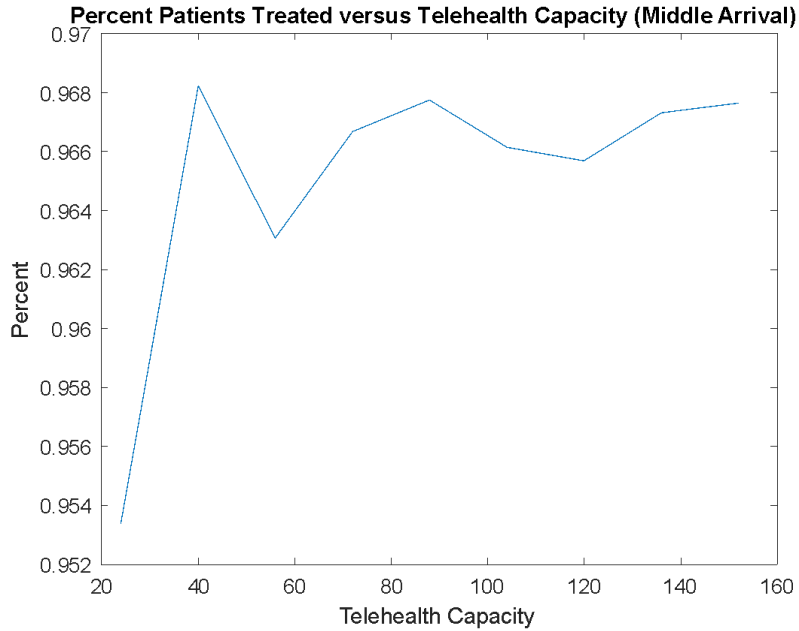


Figure K: Graph of percent of patients treated vs. telehealth capacity for Forbes Hospital at a middle patient arrival rate.

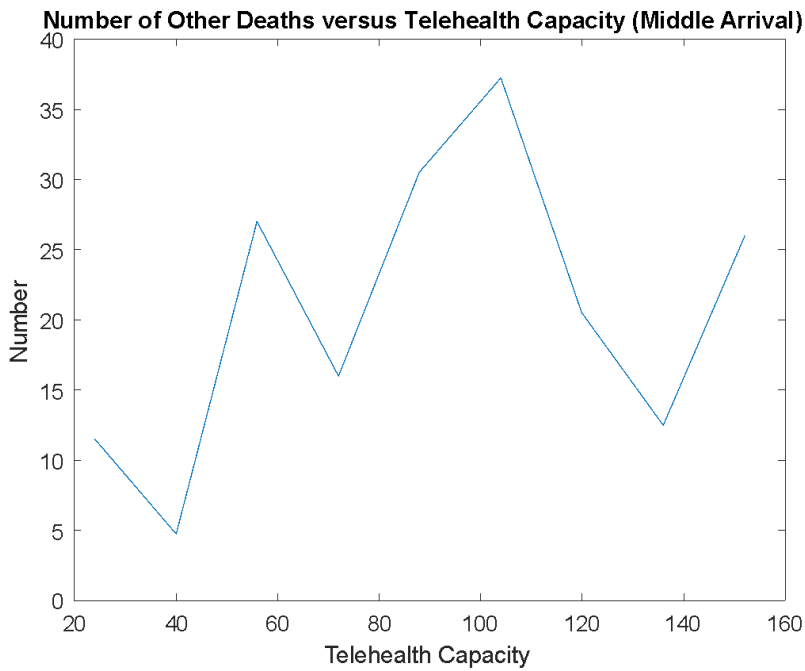


Figure L: Graph of number of other deaths vs. telehealth capacity for Forbes Hospital at middle patient arrival rate.

Number of Heart Attack Deaths versus Telehealth Capacity (Middle Arrival)

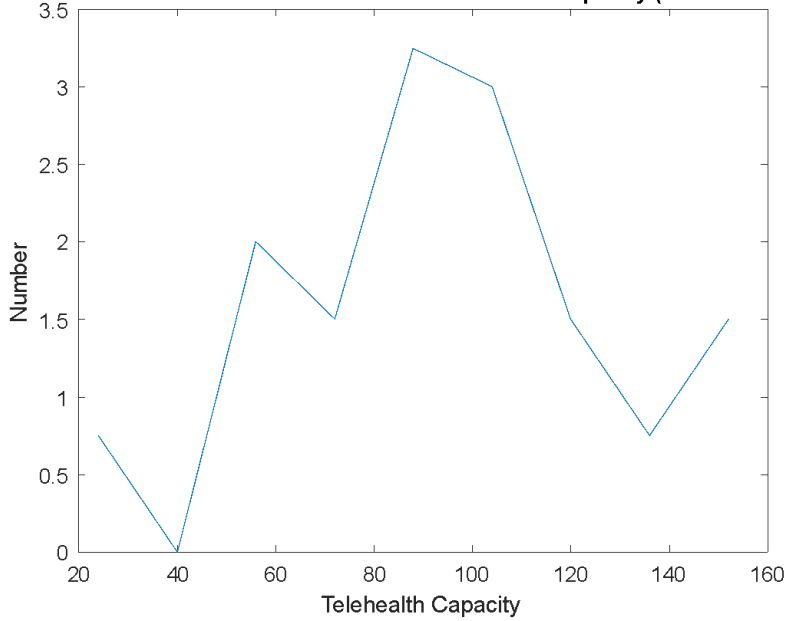


Figure M: Graph of number of heart attack deaths vs. telehealth capacity for Forbes Hospital at middle patient arrival rate.

Percent Patients Ignored versus Telehealth Capacity (High Arrival)

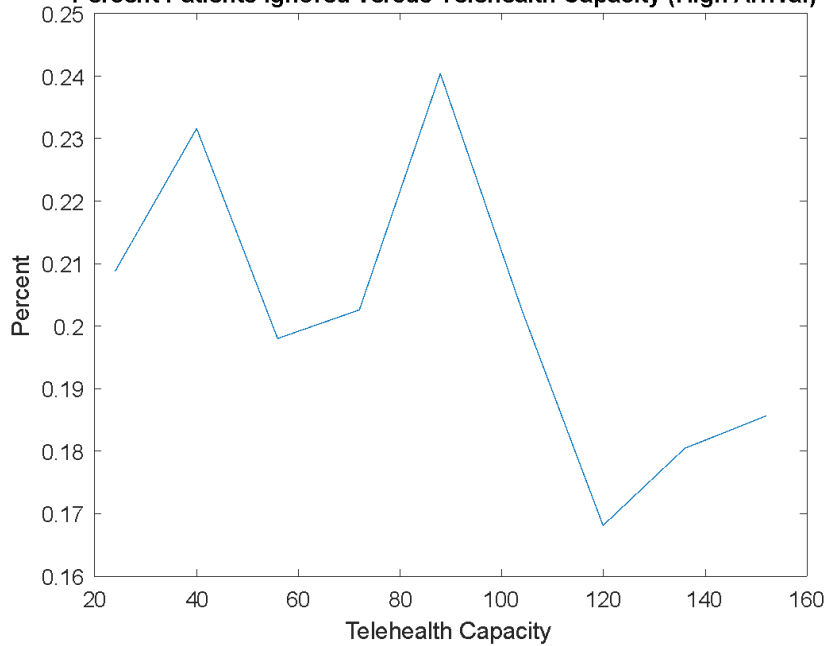


Figure N: Graph of percent of patients ignored vs. telehealth capacity for Forbes Hospital at a high patient arrival rate.

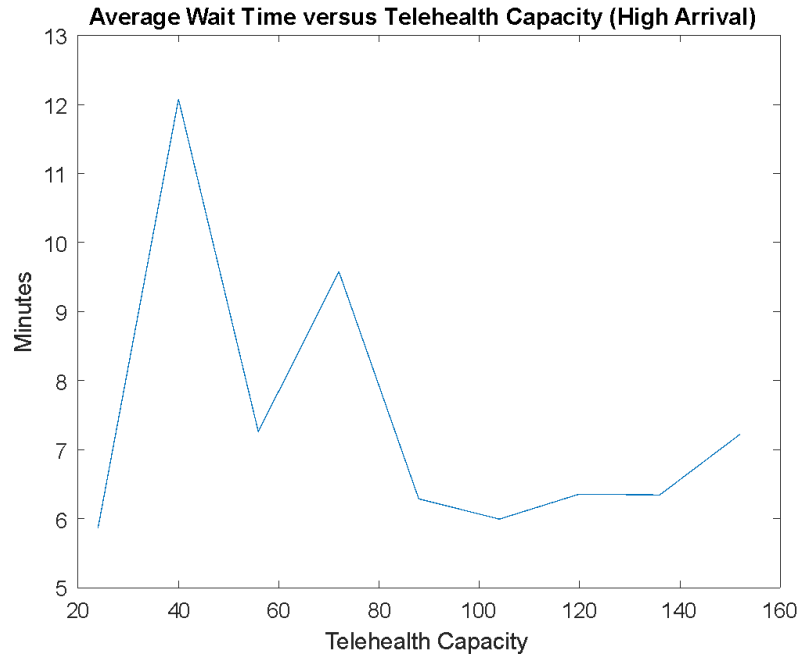


Figure O: Graph of average wait time (minutes) vs. telehealth capacity for Forbes Hospital at high patient arrival rate.

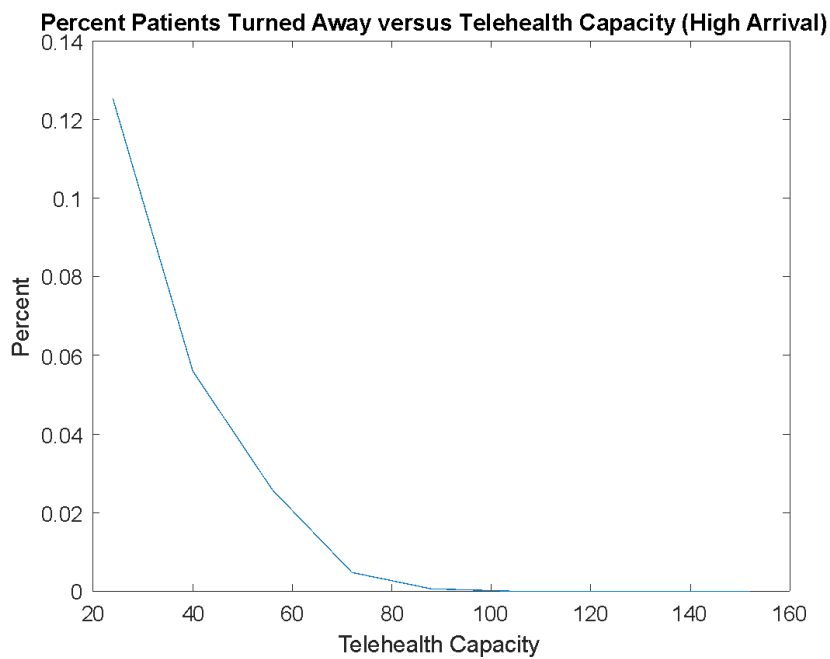


Figure P: Graph of percent of patients turned away vs. telehealth capacity for Forbes Hospital at high patient arrival rate.

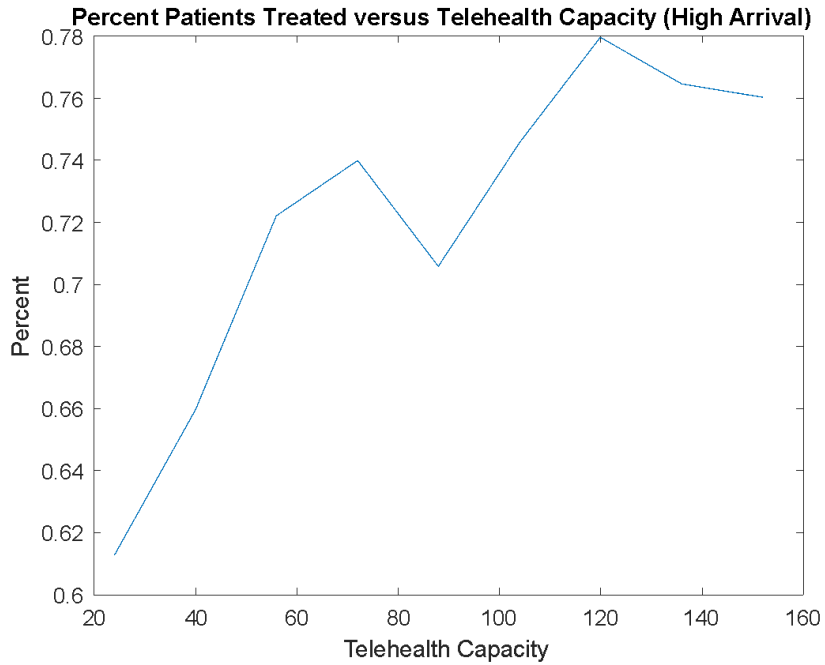


Figure Q: Graph of percent of patients treated vs. telehealth capacity for Forbes Hospital at high patient arrival rate.

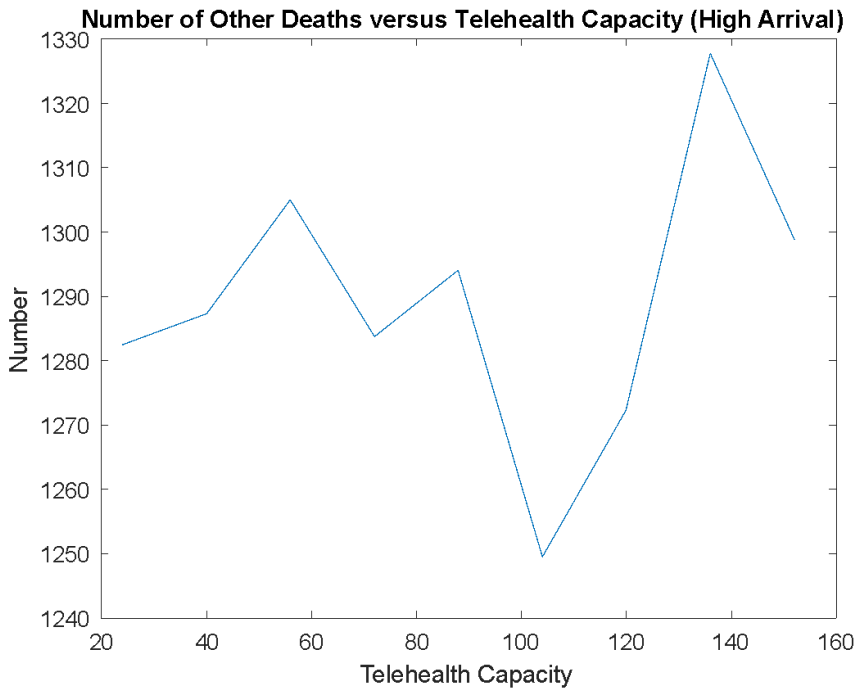


Figure R: Graph of number of other deaths vs. telehealth capacity for Forbes Hospital at high patient arrival rate.

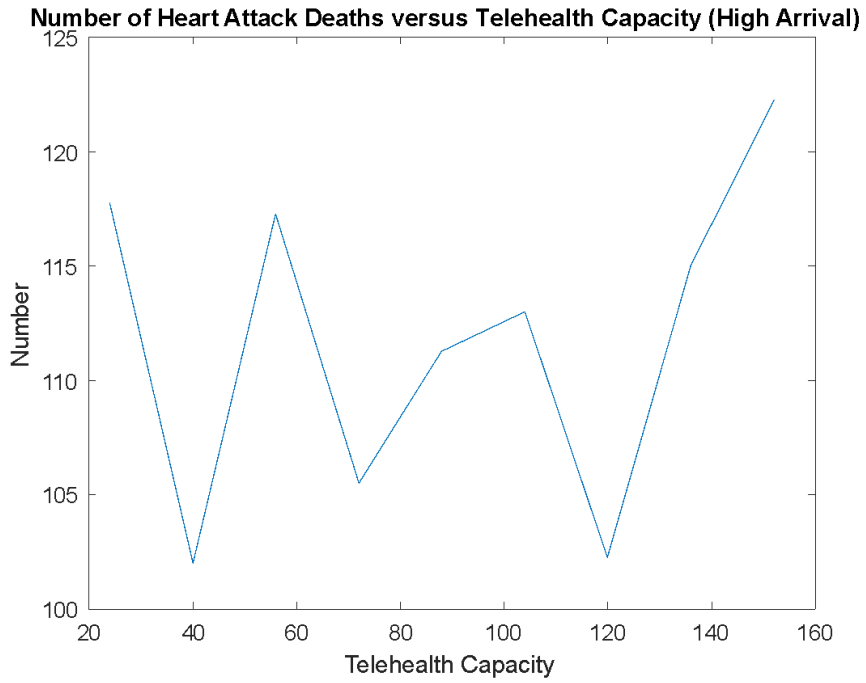


Figure S: Graph of number of heart attack deaths vs. telehealth capacity for Forbes Hospital at high patient arrival rate.