

Supplementary Figure 7 (S7): Forbes Hospital Standard Data

Final Outputs of Forbes Hospital (averaged over four runs)

	Low Patient Arrival	Middle Patient Arrival	High Patient Arrival
Percent Patients Ignored	0.0302 ± 0.0015	0.0302 ± 0.0008	0.0288 ± 0.0018
Average Wait Time	6.9410 ± 0.5647	7.1781 ± 0.1563	42.7954 ± 37.4901
Percent Patients Turned Away	0 ± 0	0 ± 0	0.2376 ± 0.0137
Percent Patients Treated	0.9698 ± 0.0015	0.9698 ± 0.0008	0.6600 ± 0.0126
Number of Other Deaths	0 ± 0	0 ± 0	1801 ± 70.5644
Number of Heart Attack Deaths	0 ± 0	0 ± 0	132.5 ± 5.4467

Figure A: Table of Forbes Hospital final outputs, averaged over four runs, for different variables at different patient arrival rates.

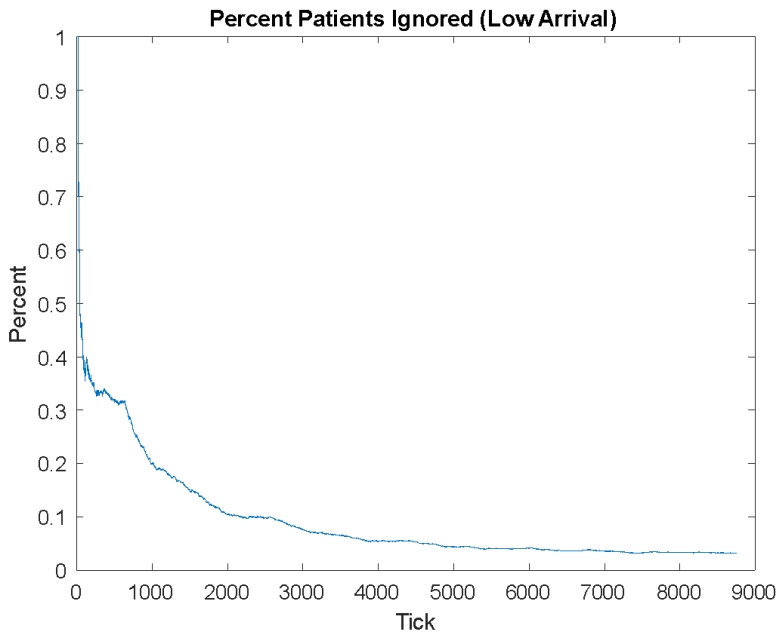


Figure B: Graph of percent of patients ignored vs. time (ticks) for Forbes Hospital at a low patient arrival rate.

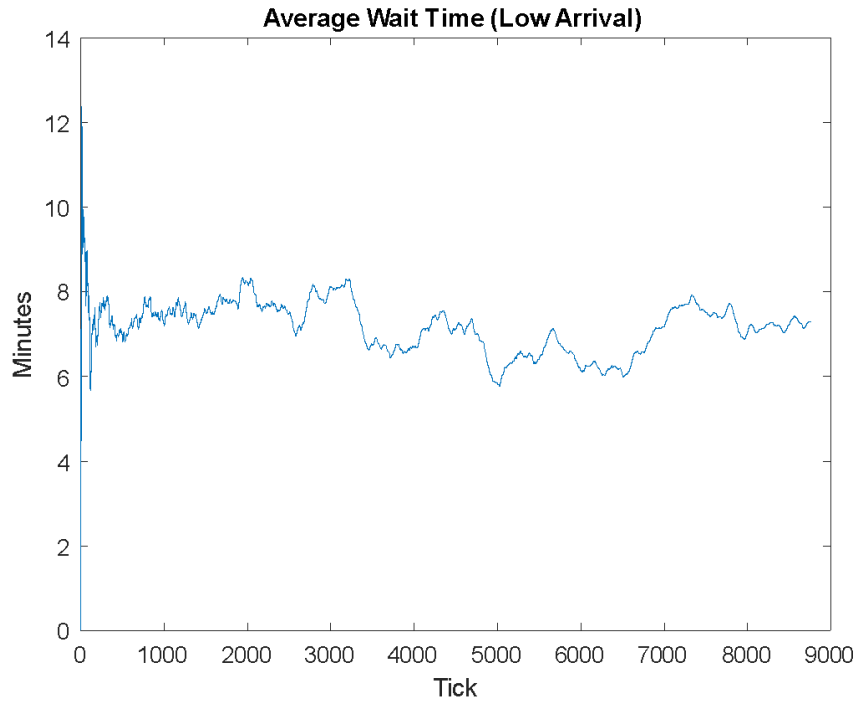


Figure C: Graph of average wait time (minutes) vs time (ticks) for Forbes Hospital at a low patient arrival rate.

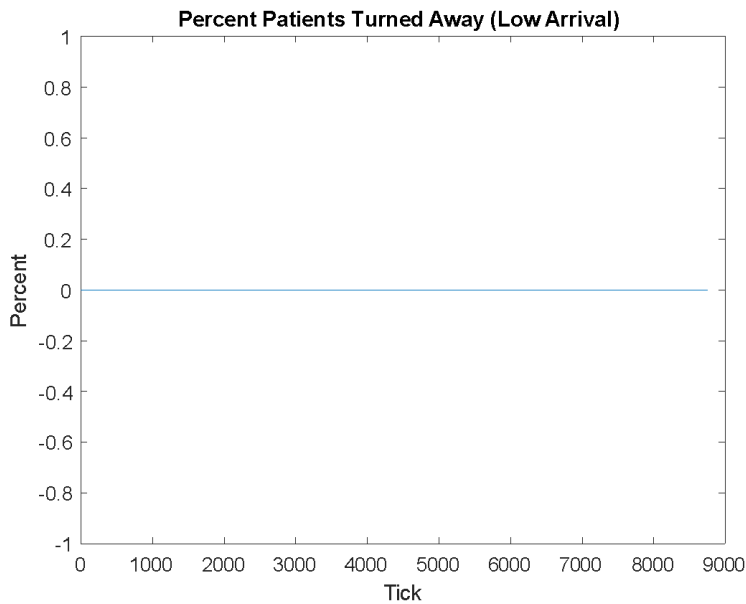


Figure D: Graph of percent of patients turned away vs time (ticks) for Forbes Hospital at a low patient arrival rate.

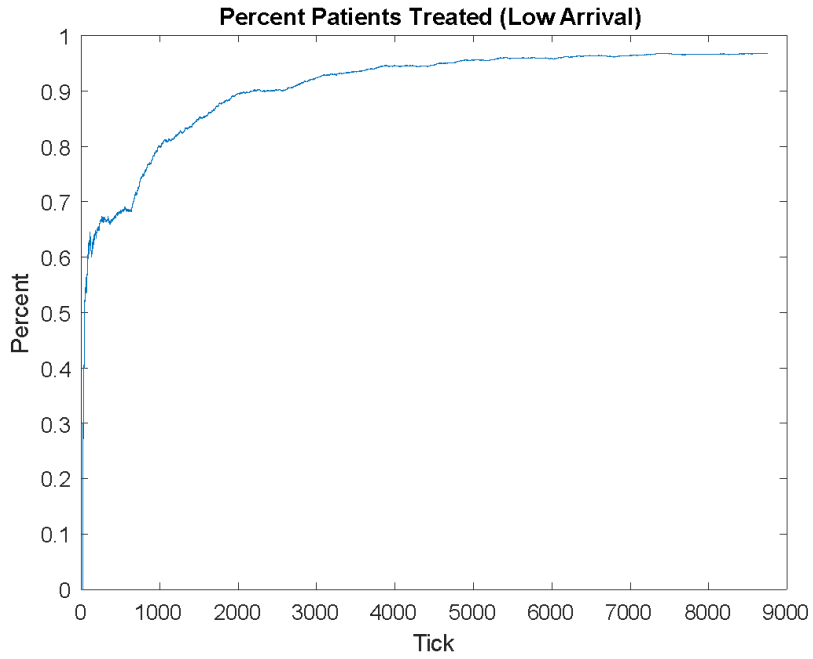


Figure E: Graph of percent of patients treated vs. time (ticks) for Forbes Hospital at a low patient arrival rate.

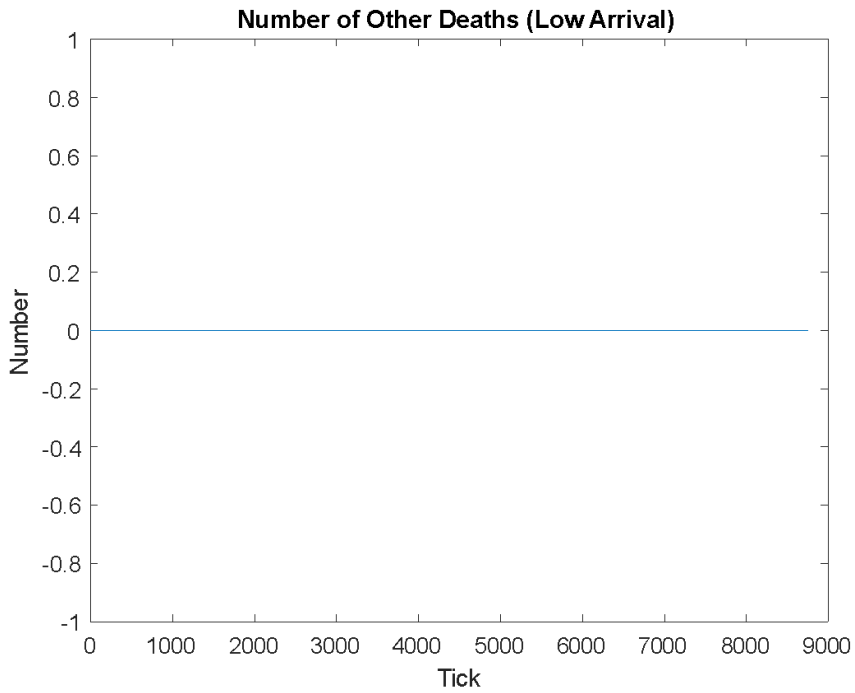


Figure F: Graph of number of other deaths vs. time (ticks) for Forbes Hospital at a low patient arrival rate.

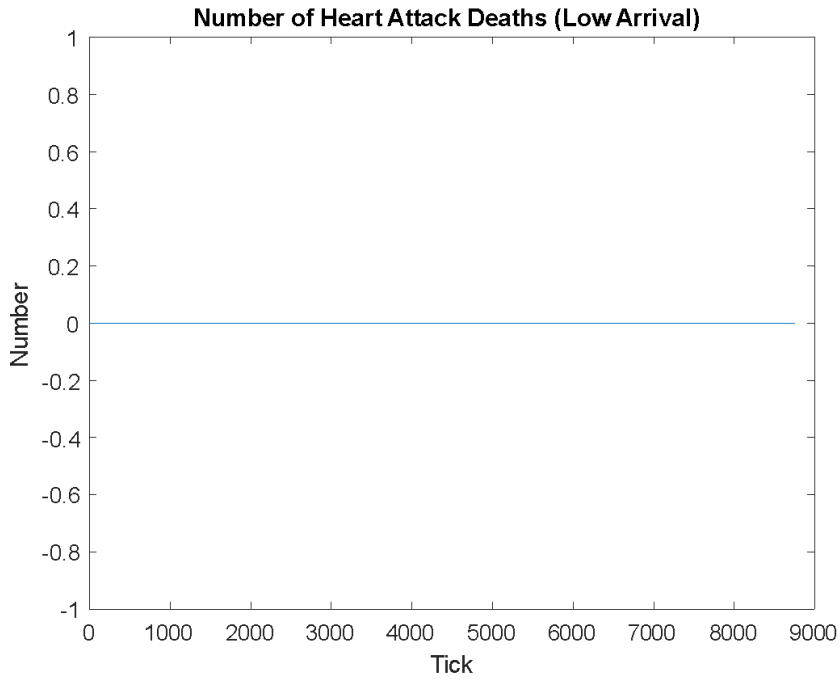


Figure G: Graph of number of heart attack deaths vs. time (ticks) for Forbes Hospital at a low patient arrival rate.

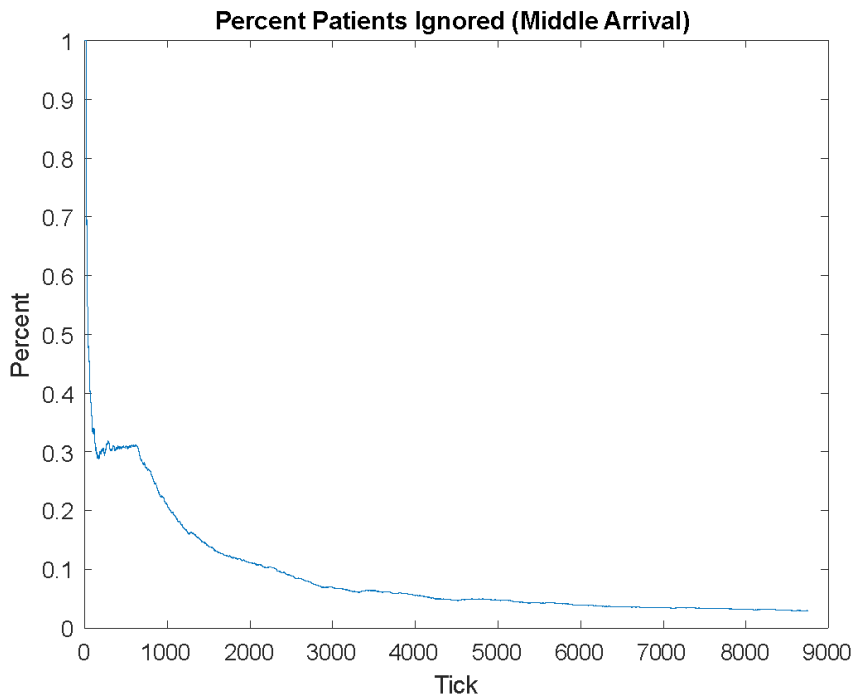


Figure H: Graph of percent of patients ignored vs. time (ticks) for Forbes Hospital at middle patient arrival rate.

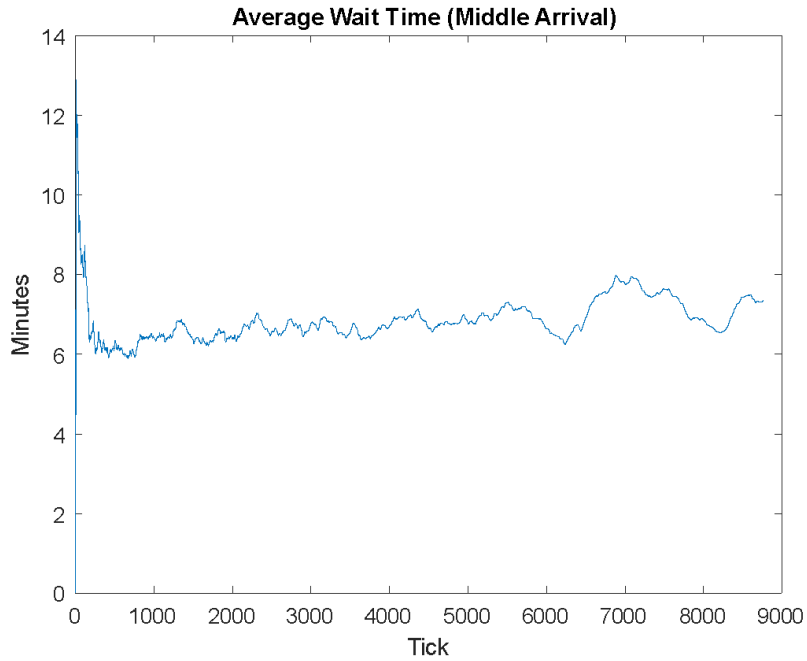


Figure I: Graph of average wait time (minutes) vs. time (ticks) for Forbes Hospital at middle patient arrival rate.

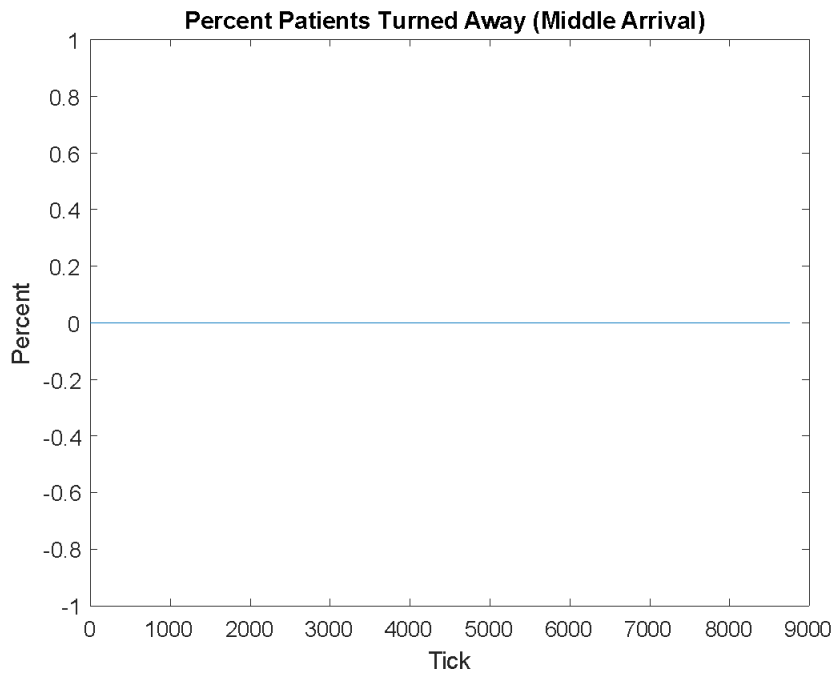


Figure J: Graph of percent of patients turned away vs. time (ticks) for Forbes Hospital at middle patient arrival rate.

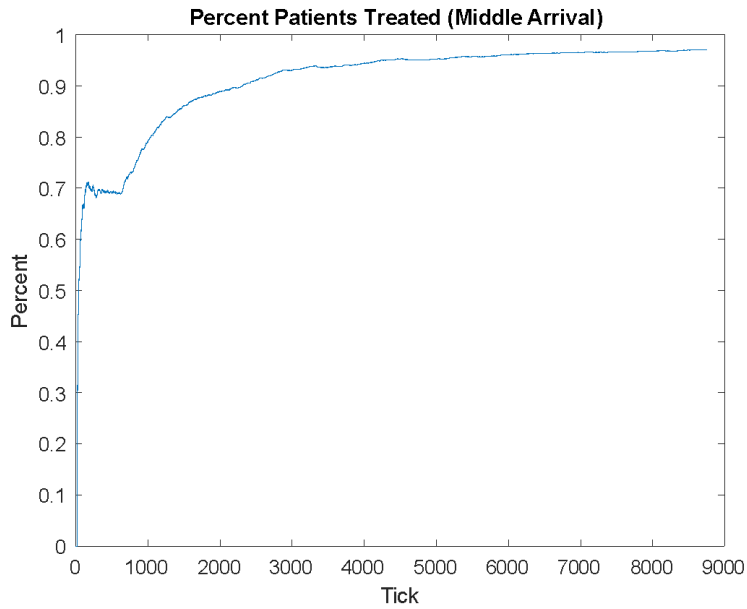


Figure K: Graph of percent of patients treated vs. time (ticks) for Forbes Hospital at middle patient arrival rate.

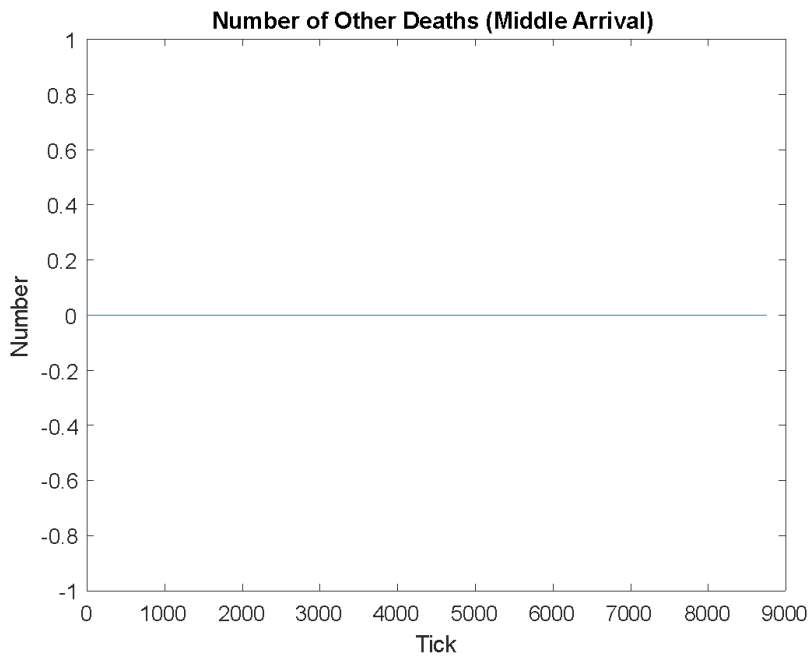


Figure L: Graph of number of other deaths vs. time (ticks) for Forbes Hospital at middle patient arrival rate.

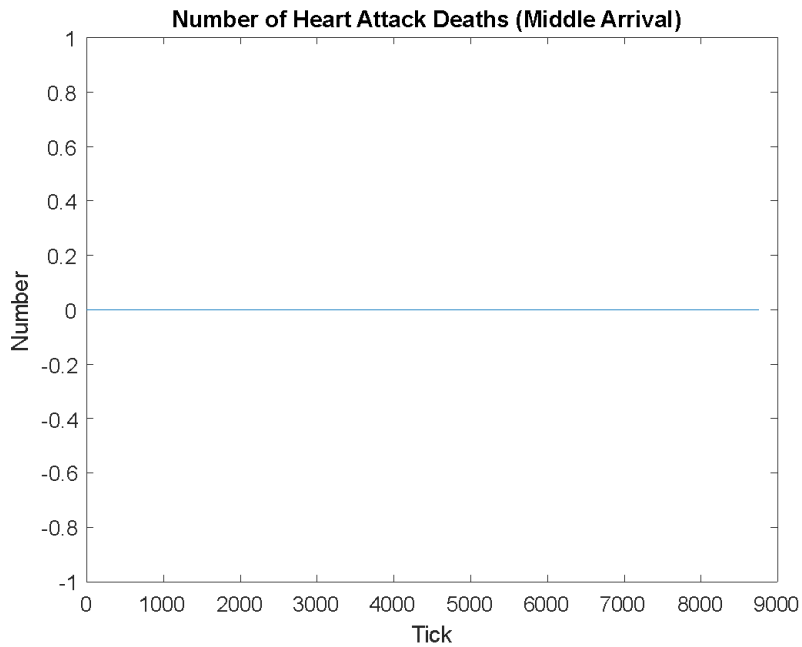


Figure M: Graph of number of heart attack deaths vs. time (ticks) for Forbes Hospital at middle patient arrival rate.

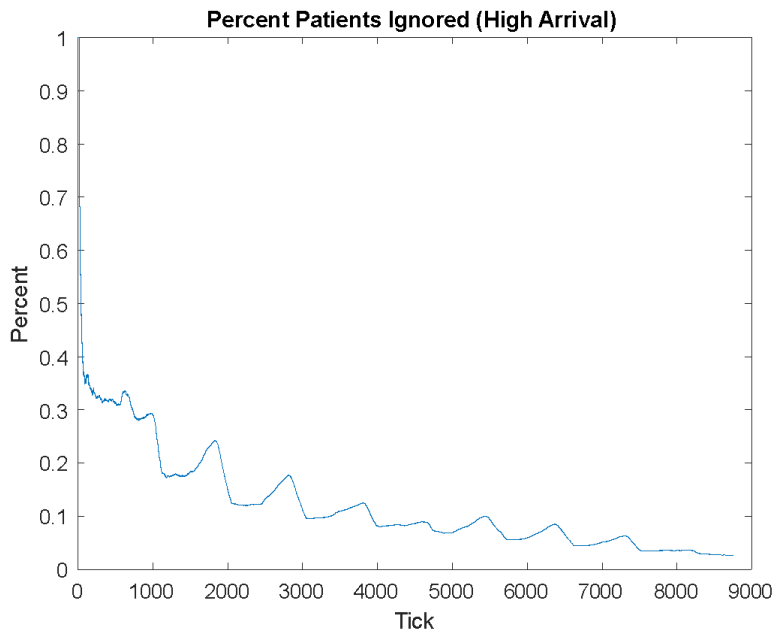


Figure N: Graph of percent of patients ignored vs. time (ticks) for Forbes Hospital at high patient arrival rate.

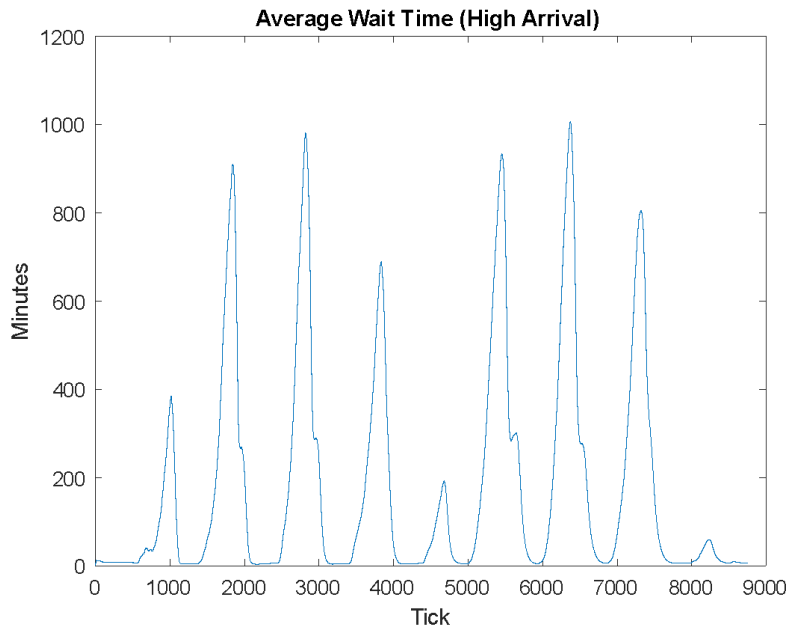


Figure O: Graph of average wait time (minutes) vs. time (ticks) for Forbes Hospital at high patient arrival rate.

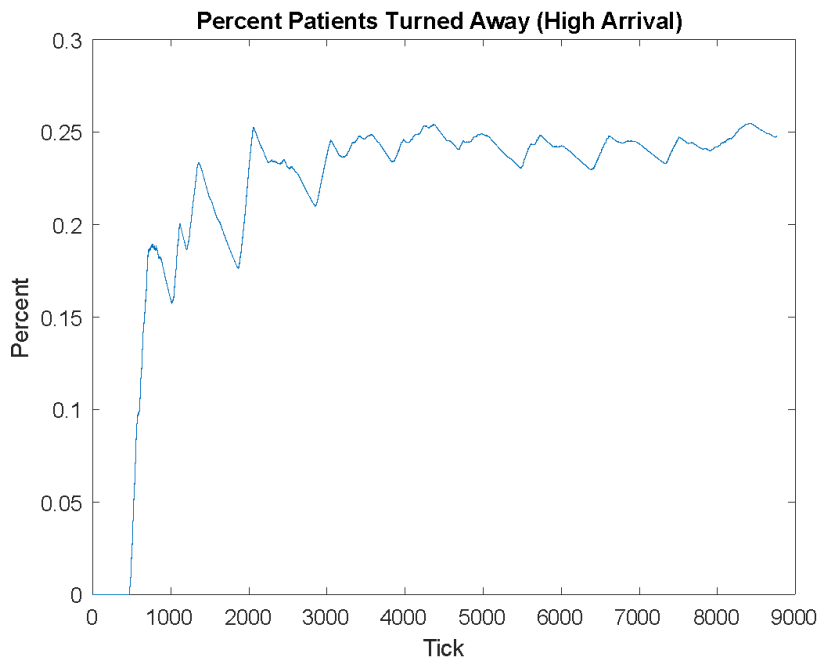


Figure P: Graph of percent of patients turned away vs. time (ticks) for Forbes Hospital at high patient arrival rate.

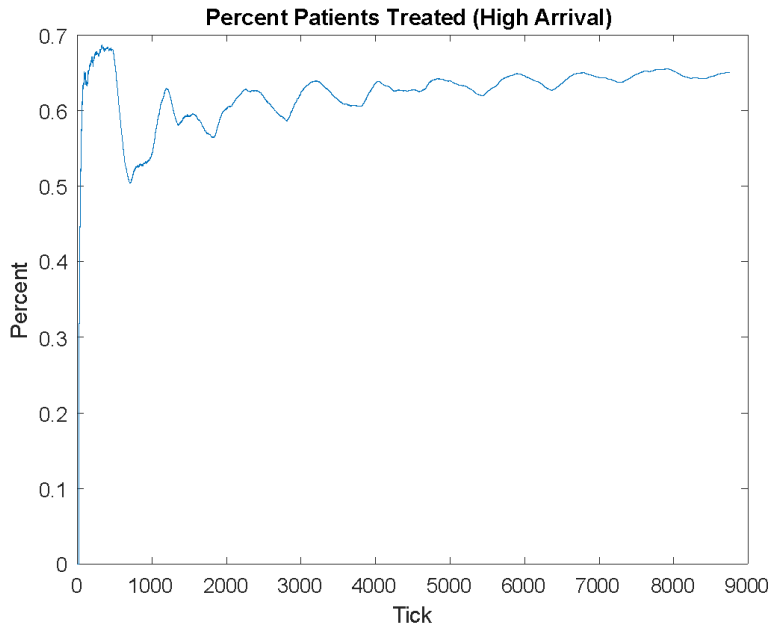


Figure Q: Graph of percent of patients treated vs. time (ticks) for Forbes Hospital at high patient arrival rate.

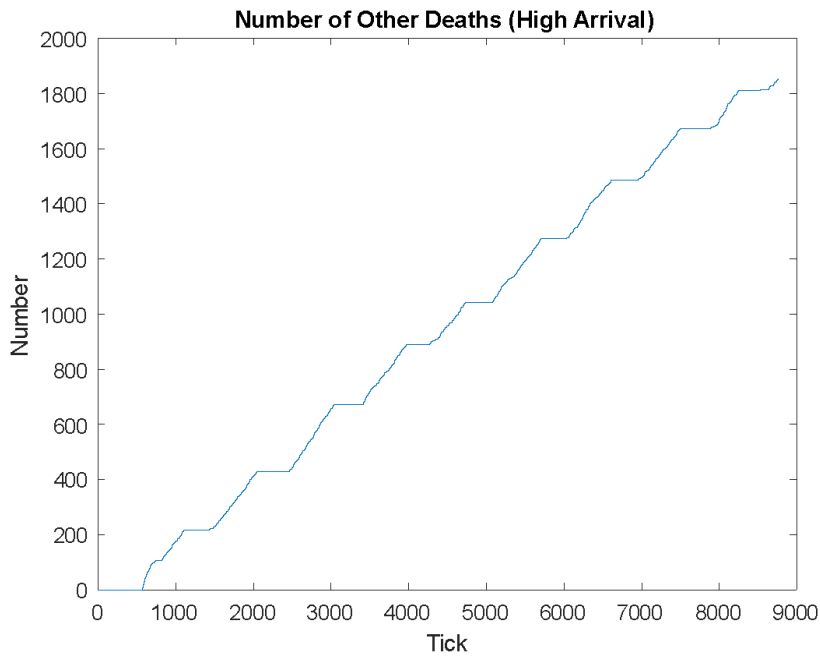


Figure R: Graph of number of other deaths vs. time (ticks) for Forbes Hospital at high patient arrival rate.

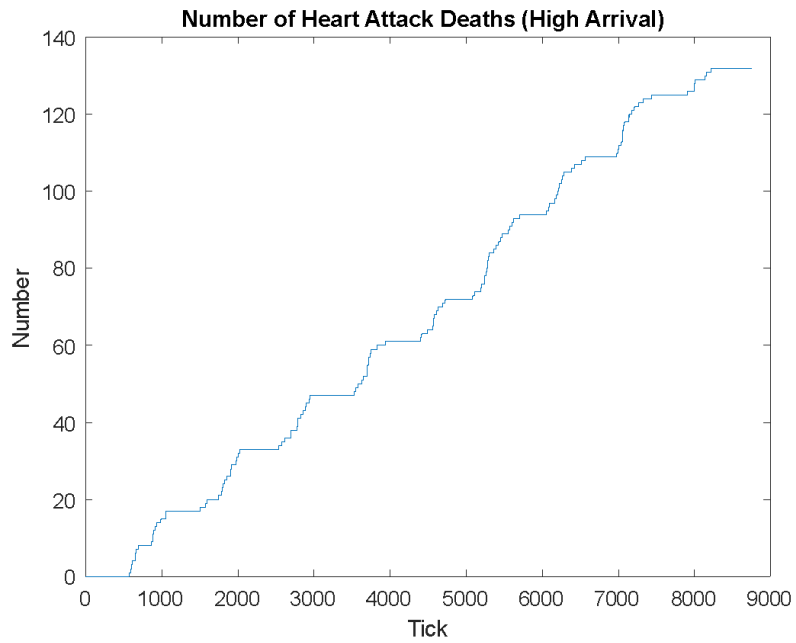


Figure S: Graph of number of heart attack deaths vs. time (ticks) for Forbes Hospital at a high patient arrival rate.